

Spyglass Ridge



**PARKS &
RECREATION**
LINCOLN CITY

Trailheads and Parking

If you are looking for something a bit longer, this 73-acre forest trail is a great option. Spyglass Ridge contains 1.75 miles of lightly trafficked loop trail. The outside loop is 1.25 miles plus additional paths to explore. Though sections of the trail can become steep and a bit rugged, they are fairly wide and easy to navigate. Spyglass Ridge had a tree-thinning project for the health of the overall ecosystem. One of the effects is greatly improved visibility, of the vegetation and wildlife. During the Spring and Fall, you might see kids from the Taft school sports teams training here.

Getting There:

From Hwy 101, turn onto SE High School Dr. Turn onto SE Spyglass Ridge Dr and follow the road to a parking area at the end of the road.



Trail Information

Length: Outer Loop 1.25 miles

Elevation Gain: 190 ft.

Route Type: Loop

Dogs: Welcome on a leash

Difficulty: Moderate



Black-tailed Deer

Black-tailed deer are very common in and around Lincoln City's Open Spaces. They take advantage of the safety the forests offer them, and also browse on the grasses and underbrush plants they find in suburban environments. The female pictured here does not grow antlers, but the male grows a new set of antlers every year. The deer's large ears can move independently.

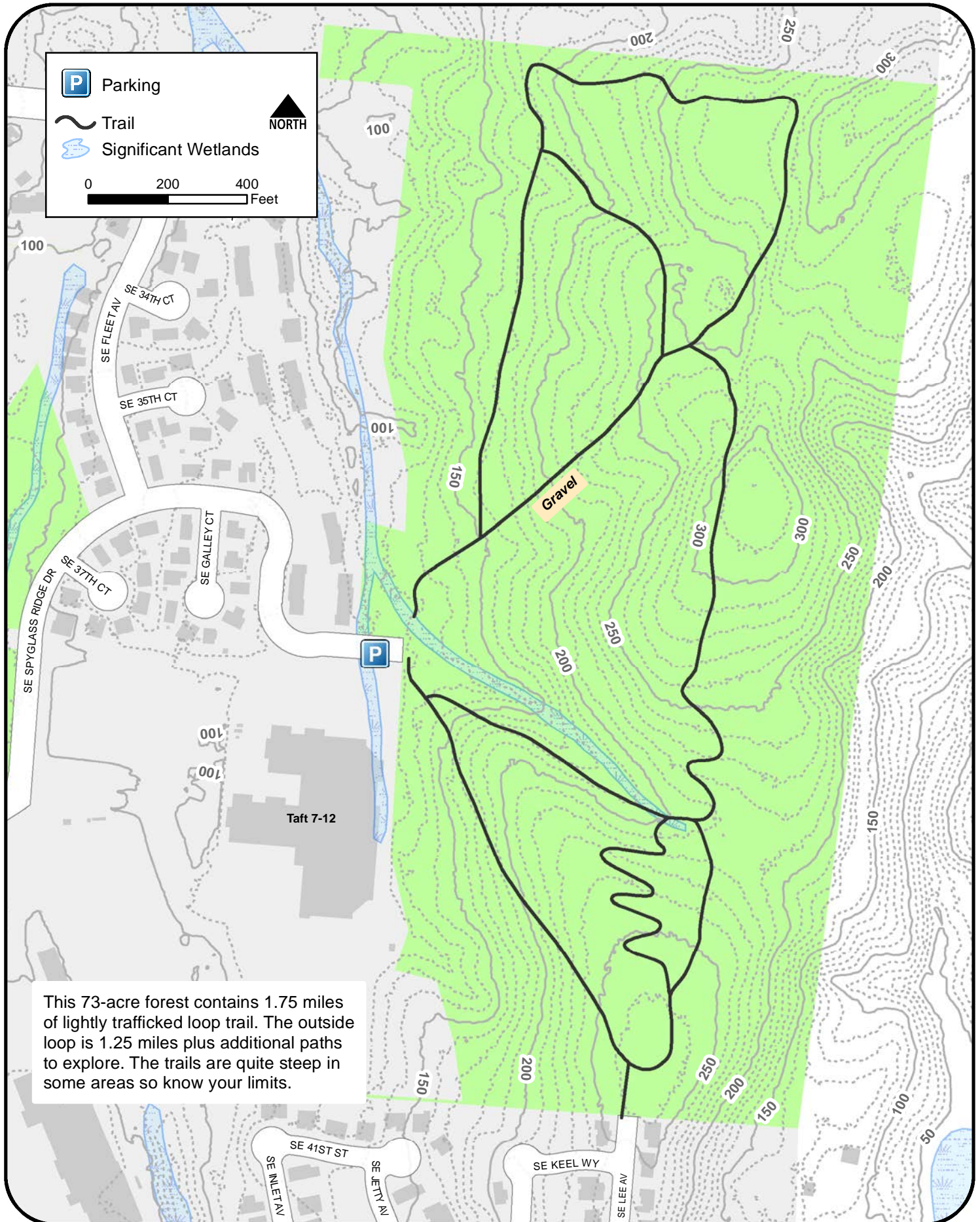


Douglas Squirrel

Several Lincoln City Open Spaces are home to these cheeky pine squirrels, whose orange under-color is brighter in the summer, and duller in the winter. They can be found among the Sitka spruce trees, where they peel off the scales of the cones to get at the seeds. This squirrel species is named in honor of the well-known Scottish naturalist, David Douglas, who actively explored the Pacific Northwest from 1824 to 1827.



Spyglass Ridge



This 73-acre forest contains 1.75 miles of lightly trafficked loop trail. The outside loop is 1.25 miles plus additional paths to explore. The trails are quite steep in some areas so know your limits.