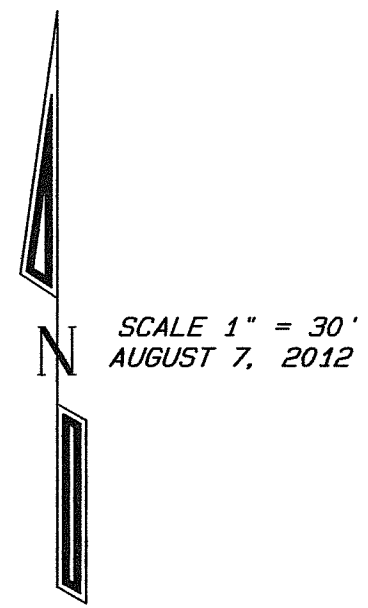


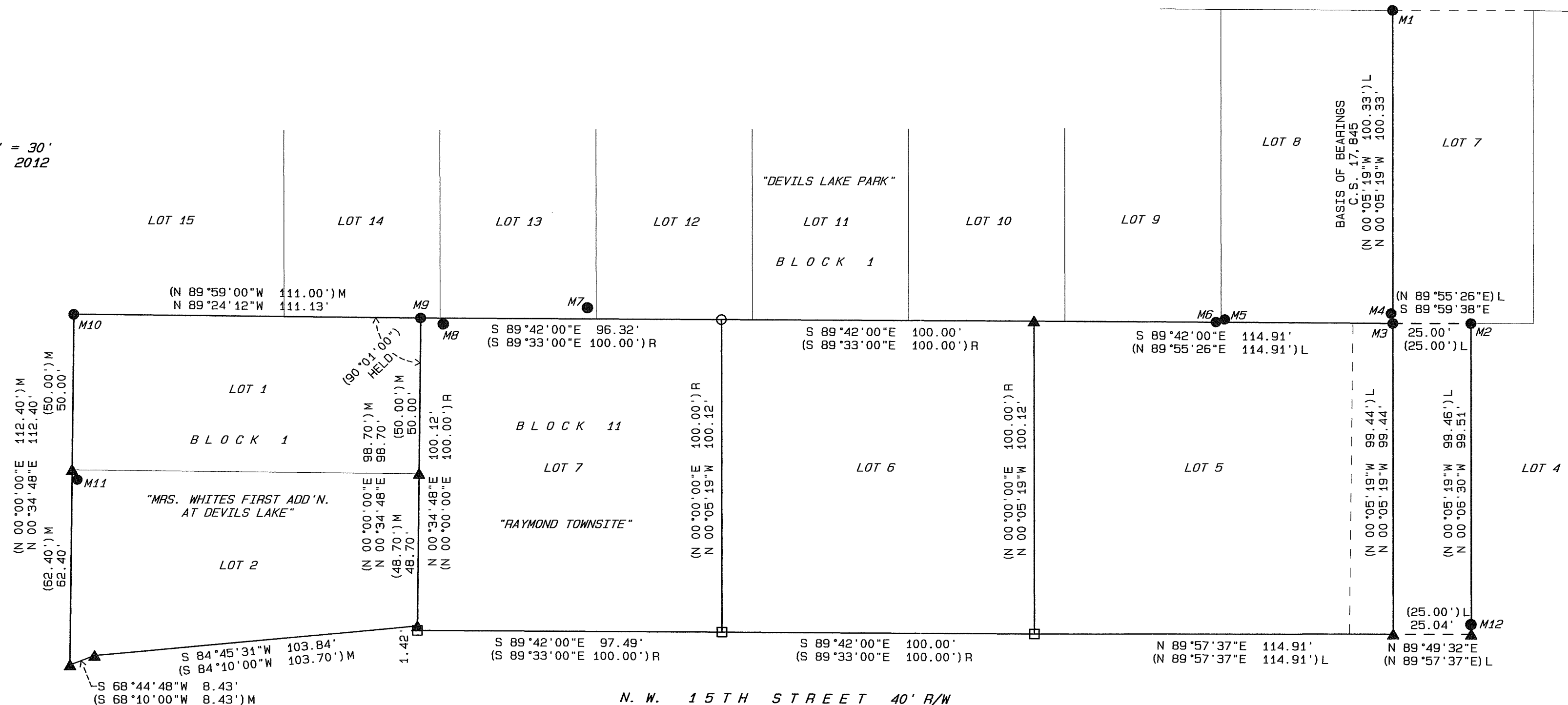
SURVEY OF LOT 7, BLOCK 11, "RAYMOND TOWNSITE"
 LOCATED IN U.S. LOT 30, SECTION 10, T 7 S, R 11 W, W.M.
 LINCOLN COUNTY, OREGON
 FOR
 THE CITY OF LINCOLN CITY, URBAN RENEWAL

N. W. 16TH STREET 30' R/W



SCALE 1" = 30'
 AUGUST 7, 2012

N. W. HARBOR AVENUE



NARRATIVE

THE PURPOSE OF THIS SURVEY IS TO MONUMENT THE NE, SE, & SW CORNERS OF LOT 7 AND RE-MONUMENT THE MONUMENT OF C.S.#7934 DESTROYED BY THE CITY IMPROVEMENTS TO NW 15th ST. AT THE SE CORNER OF LOT 6 IN BLOCK 11 "RAYMOND TOWNSITE".

SINCE C.S.#17,845 HAD RECOVERED THE MONUMENT OF C.S.#7934 AT THE SE CORNER OF LOT 6 ALONG WITH OTHER MONUMENTS IN THIS AREA AND THAT C.S.#18,132 RECOVERED PRIOR TO AND RESET AFTER CONSTRUCTION THE MONUMENTS HELD AND SET BY C.S.#17,845, THIS SURVEY RECOVERED THE RESET CORNERS OF C.S.#18,132 ALONG WITH THE LINCOLN CO. MONUMENT M9 AT THE NW CORNER OF LOT 7 BLOCK 11 AND PLAT MONUMENT M10 AT THE NW CORNER OF LOT 1 BLOCK 1 "MRS. WHITES FIRST ADD. TO DELAKE", AND OTHER MONUMENTS OF RECORD AND NOT OF RECORD AS SHOWN FOUND.

RECORD DATA OF C.S.#17,845 WAS THEN HELD FROM THE MONUMENTS OF C.S.#18,132 TO DETERMINE POSITION TO RE-MONUMENT THE SE CORNER OF LOT 6.

LINE PARALLEL WITH THE RECOVERED LINE AND BASIS OF BEARINGS FOR THIS SURVEY BETWEEN M1 & M3 WAS THEN HELD FROM THE SE CORNER OF LOT 6 AND INTERSECTED WITH THE LINE RECOVERED BETWEEN M3 AND M9 BEING HELD BY THIS SURVEY FOR THE NORTH LINE OF BLOCK 11 TO DETERMINE POSITION FOR THE NE CORNER OF LOT 6.

PLAT DISTANCE WAS THEN HELD FROM THE NE CORNER OF LOT 6 ON LINE TO M9 TO DETERMINE POSITION TO MONUMENT THE NE CORNER OF LOT 7.

PLAT DISTANCE WAS THEN HELD FROM THE SE CORNER OF LOT 6 PARALLEL WITH THE HELD NORTH LINE OF BLOCK 11 TO DETERMINE POSITION TO MONUMENT THE SE CORNER OF LOT 7.

FROM M9 AND THE LINE HELD FOR THE NORTH LINE OF LOT 1 BLOCK 1 "MRS. WHITES FIRST ADD. TO DELAKE" BETWEEN M9 AND M10 PLAT ANGLE AND DISTANCE WAS HELD TO CALCULATE POSITION FOR THE EAST LINE OF BLOCK 1 AND SE CORNER OF LOT 2 BLOCK 1 "MRS. WHITES FIRST ADD. TO DELAKE". THEN LINE PARALLEL WITH THE NORTH LINE OF BLOCK 11 WAS HELD FROM THE SE CORNER OF LOT 7 AND INTERSECTED WITH THE EAST LINE OF BLOCK 1 "MRS. WHITES FIRST ADD. TO DELAKE", TO DETERMINE POSITION TO MONUMENT THE SW CORNER OF LOT 7.

FOUND MONUMENT TABLE

M1 = 5/8" I.R. W/YPC MARKED "PLS 2351" C.S. 18,132
M2 = 1" COPPER DISC MARKED "PLS 2351" C.S. 18,132
M3 = 1" COPPER DISC MARKED "PLS 2351" C.S. 18,132
M4 = 5/8" I.R. W/YPC MARKED "DENISON" 2.02'N & 0.03'W NO RECORD OF SURVEY
M5 = 1/2" I.R. 0.26'N & 0.20'E OF SW COR. LOT 8 BLOCK 1 "DEVILS LAKE PARK", C.S. 7934
M6 = 5/8" I.R. W/DAMAGED YPC MARKED "GI" 0.08'N & 0.45'W OF SW COR. LOT 8 BLOCK 1 "DEVILS LAKE PARK" C.S. 9611
M7 = 1" AXLE 3.60'N & 2.81'W OF SW COR. LOT 12 BLOCK 1 "DEVILS LAKE PARK" NO RECORD OF SURVEY
M8 = 1/2" I.R. 1.88'S & 1.01'E OF SW COR. LOT 13 BLOCK 1 "DEVILS LAKE PARK" NO RECORD OF SURVEY
M9 = 3" LINCOLN COUNTY ALUMINUM CAP STAMPED "S10 C-W-SE 1/64 2001 PLS 1816" C.S. 16,366
M10 = 3/4" I.P. BENT WEST, BURIED 0.3', TIED PLUMB, OPM "MRS. WHITES FIRST ADD'N. AT DEVILS LAKE"
M11 = 5/8" I.R. W/YPC MARKED "LOOMIS" 0.33'S & 0.13'E NO RECORD OF SURVEY
M12 = 1" COPPER DISC MARKED "PLS 2351" (N 01°24'24"W 3.13')L OF HELD I.R. (NOW MISSING) IN C.S. 17,845, C.S. 18,132

LEGEND

- I.P. = IRON PIPE
- I.R. = IRON ROD
- YPC = YELLOW PLASTIC ID CAP
- OPM = ORIGINAL PLAT MONUMENT
- ▲ = CALCULATED POINT
- = MONUMENTS FOUND AS NOTED IN MONUMENT TABLE
- = MONUMENT SET - 5/8" x 30" I.R. W/YPC MARKED "FERGUSON P.L.S. 2279"
- = MONUMENTS SET - 2" BRASS CAP IN CONCRETE MARKED "PROP COR, LOT #, P.L.S. 2279, 8-1-12"
- C.S. xxx = REFERENCE NUMBER OF RECORD SURVEY
- (xxxx)L = DATA OF RECORD SURVEY BY LRS, C.S. 17,845
- (xxxx)M = DATA OF RECORD PLAT OF "MRS. WHITES FIRST ADD'N. AT DEVILS LAKE"
- (xxxx)R = DATA OF RECORD PLAT OF "RAYMOND TOWNSITE"
- xxxx = DATA OBSERVED BY THIS SURVEY WHERE MEASURED OR CALCULATED DIFFERENT THAN RECORD & NEW DATA

SURVEY BY
DARIUS K. FERGUSON P.L.S.
LAND SURVEYING
 6062 SE HWY 101, SUITE B
 LINCOLN CITY, OR. 97367
 PH: (541) 894-5854

REGISTERED
PROFESSIONAL
LAND SURVEYOR

Darius K. Ferguson

OREGON
 JULY 16, 1987
DARIUS K. FERGUSON
 2279

RENEWAL DATE 12-31-13