



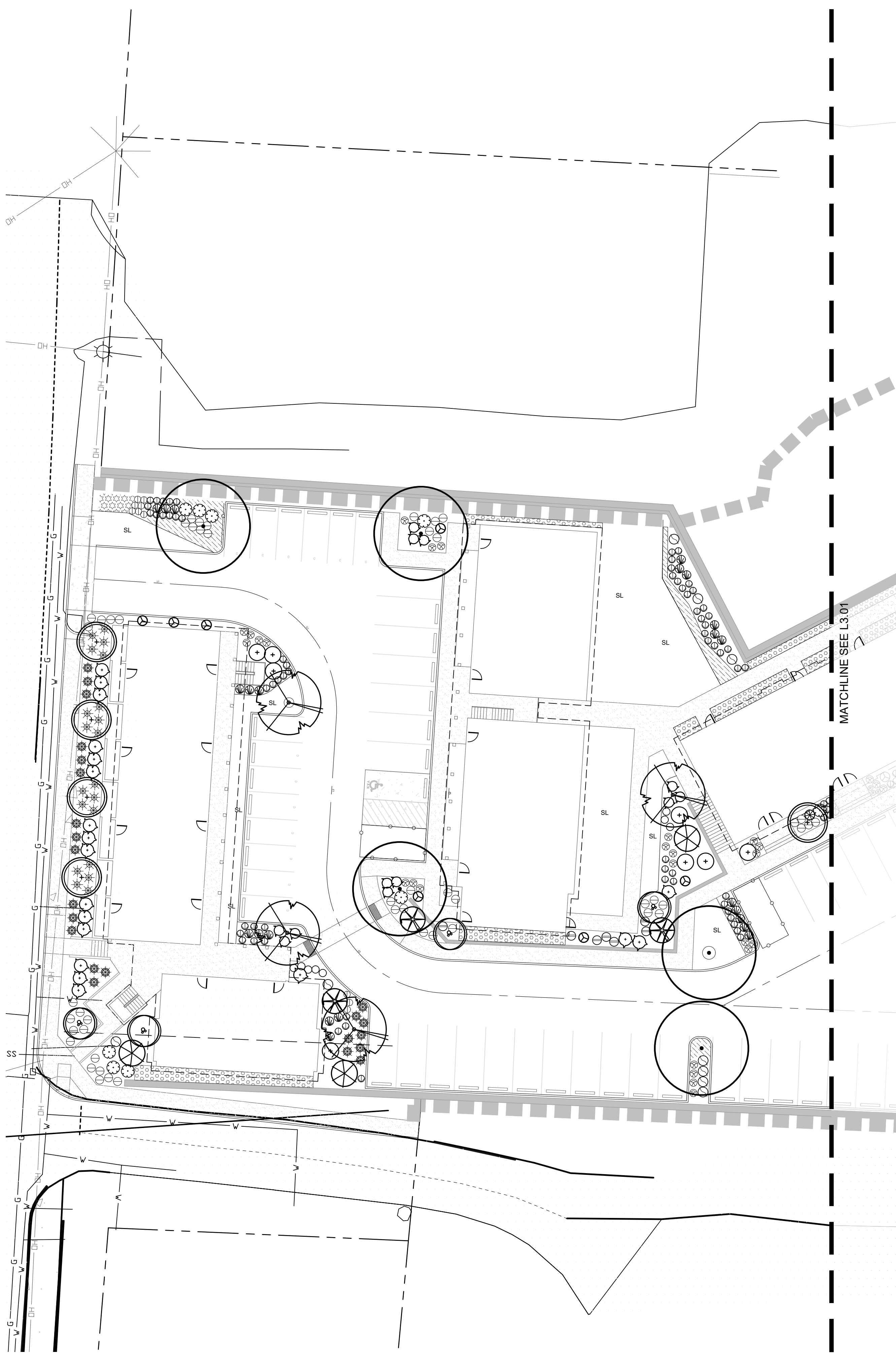
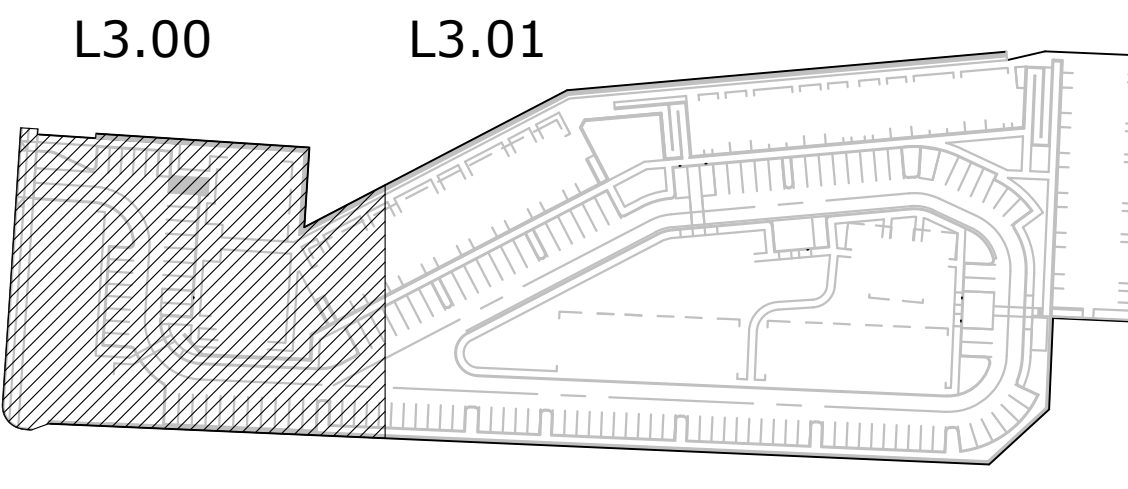
PROJECT NUMBER:

SHEET TITLE:

**PLANTING PLAN**

DRAWN BY:  
 DATE CREATED:

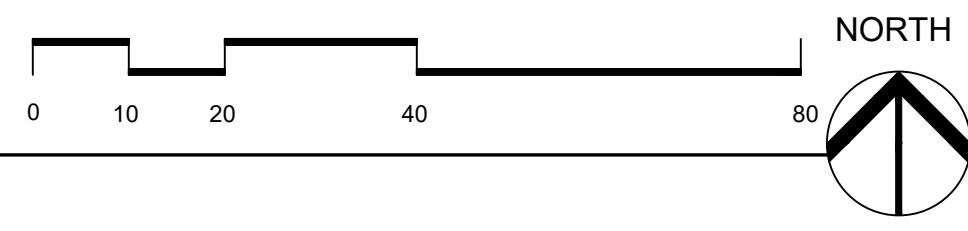
SHEET:  
**L3.00**

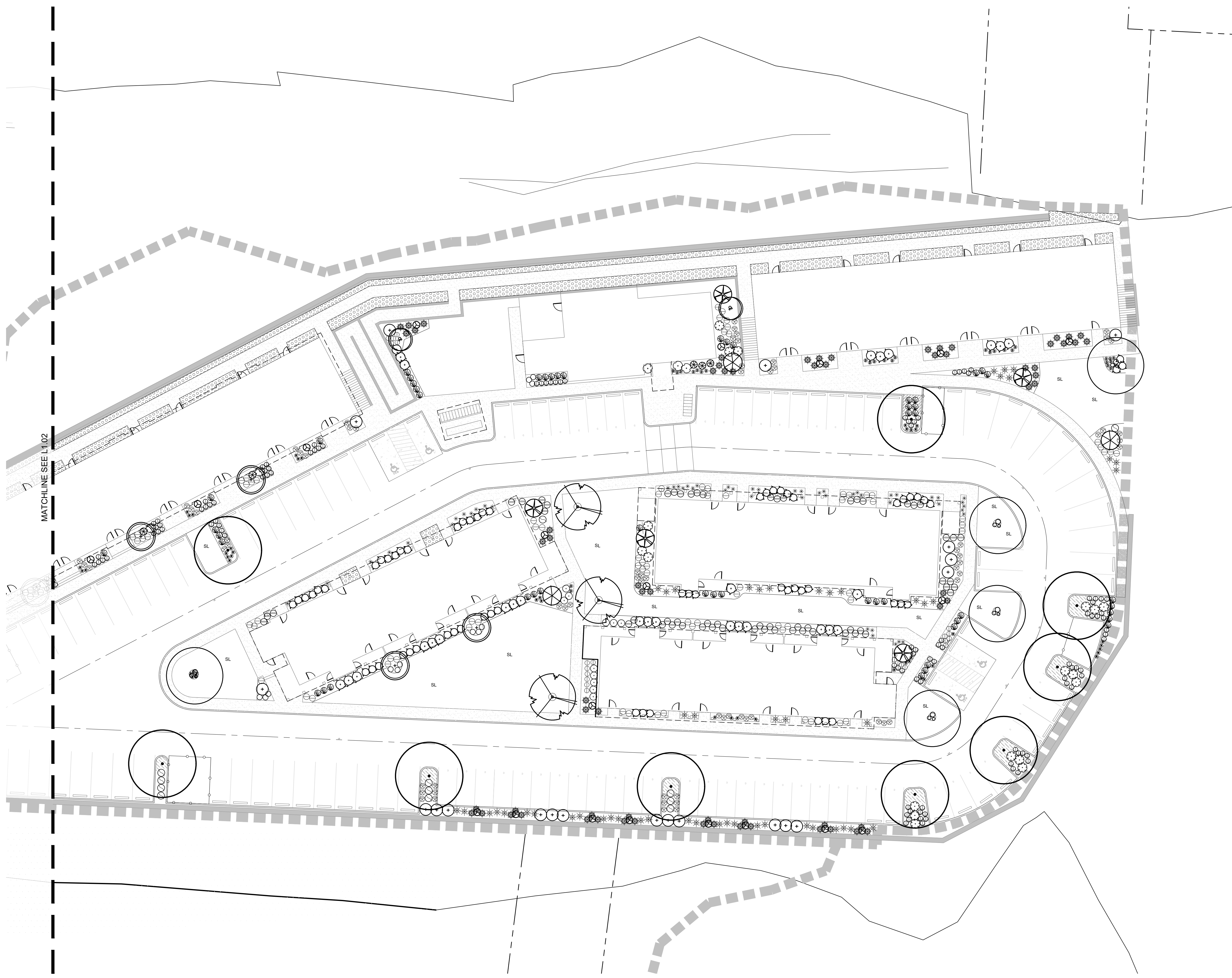
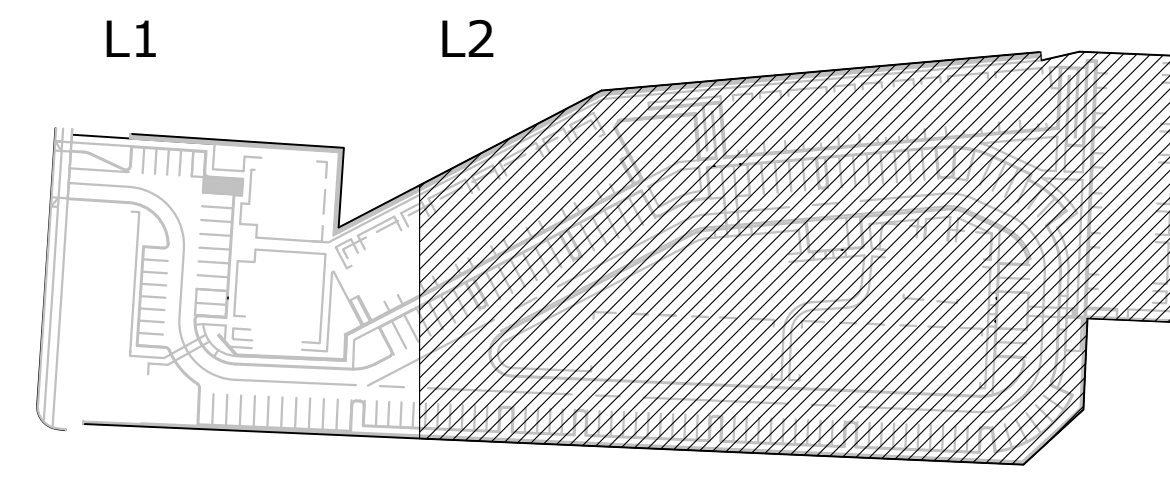


**PLANT LEGEND**

SYMBOL	NAME	QTY.	SIZE	TYPE	QUAL.
<b>TREES</b>					
+	ACER RUBRUM 'JFS-KW78' Armstrong Gold Maple	9	2 1/2" CAL.	B&B	CERTIFIED BY LA
•	ACER RUBRUM 'FRANKJR. PP 16769' Redpointe Maple	14	2" CAL.	B&B	CERTIFIED BY LA
⊗	CERCIDIPHYLLUM JAPONICUM Katsura	5	1.5-2" CAL. 3 TRUNK MIN.		CITY GUIDE
⊗	CHAMACYPARIS NOOTKATENSIS Alaska Cedar	8	8-9' HT.	B&B	CITY GUIDE
⊗	PINUS CONTORTA 'CONTORTA' Shore Pine	6	8-10' HT.	B&B	CITY GUIDE
⊗	PRUNUS x YEDOENSIS 'AKEBONO' Akebono Cherry	7	2" CAL.	B&B	CITY GUIDE
<b>EVERGREEN SHRUBS</b>					
⊙	ARBUTUS UNEDO 'COMPACTA' Killarney Strawberry Bush	28	6.5 GAL.	CONTAINER	CITY GUIDE
⊙	ESCALLONIA 'COMPAKTA' Compact Escallonia	74	18-21"	CONTAINER	CITY GUIDE
⊙	ILEX CRENATA 'CONVEXA' Japanese Holly	11	15-18"	CONTAINER	CITY GUIDE
⊙	JUNIPER CHINENSIS 'TORULOS' Hollywood Juniper	27	5-6' HT.	B&B	CERTIFIED BY LA
⊙	MAHONIA AQUIL. 'COMPACTA' Compact Oregon Grape	125	12-15"	CONTAINER	NATIVE TO PNW
⊙	PICEA ABIES 'NIDIFORMIS' Bird's Nest Spruce	6	21-24"	B&B	CITY GUIDE
⊙	PIERIS JAPONICA 'MOUNTAIN FIRE' Mountain Fire Pieris	48	30-36"	CONTAINER	CITY GUIDE
⊙	RHODODENDRON NOVA ZEMBLA Nova Zembla Rhododendron	3	24-30"	CONTAINER	CITY GUIDE
⊙	RHODODENDRON BLUE BARON Blue Baron Rhododendron	20	15-18"	CONTAINER	CITY GUIDE
<b>DECIDUOUS SHRUBS</b>					
⊙	ACER CIRCINATUM Vine Maple	6	7-8' HT.	3 TRUNK MIN.	CITY GUIDE
⊙	BERBERIS THUN. 'CRIMSON PIGMY' Crimson Pigmy Barberry	33	2 GAL.	CONTAINER	CITY GUIDE
⊙	BERBERIS THUN. 'BOGOZAM' Bonaza Gold Dwarf Barberry	94	2 GAL.	CONTAINER	CITY GUIDE
⊙	PHYSOCARPUS OPULIFOLIUS 'SEAWARD' Summer Wine® Ninebark	29	5 GAL.	CONTAINER	CERTIFIED BY LA
⊙	ROSA 'RAD Iko' Red Double Knock Out Shrub Rose	72	2 GAL.	CONTAINER	CITY GUIDE
<b>GRASSES &amp; FERNS</b>					
⊙	CALAMAGROSTIS A. 'KARL FOERSTER' Karl Foerster's Feather Reed Grass	75	3 GAL.	AS SHOWN	CERTIFIED BY LA
⊙	HAKONECHLOA MACARA Hakone Grass	51	1 GAL.	CONTAINER	CERTIFIED BY LA
⊙	HELICTOTRICHON SEMPERVIRENS Blue Oat Grass	175	1 GAL.	CONTAINER	CERTIFIED BY LA
⊙	MISCANTHUS SINENSIS 'PURPURSCENS' Purple Silver Grass	21	2 GAL.	CONTAINER	CERTIFIED BY LA
<b>GROUND COVERS &amp; PERENNIALS</b>					
⊙	FRAGARIA VIRGINIANA Wild Strawberry	295	1 GAL.	18" O.C.	CERTIFIED BY LA
⊙	HEMEROCALLIS 'STELLA DE ORO' Day Lily	33	1 GAL.	AS SHOWN.	CERTIFIED BY LA
⊙	JUNIPERUS CHINENSIS 'BLUE PACIFIC' Blue Pacific Shore Juniper	52	6" POT	CONTAINER	CERTIFIED BY LA
⊙	POLYSTICHUM MUNITUM Western Sword Fern	65	2 GAL.	CONTAINER	CITY GUIDE
⊙	ROSA 'MEICOUBLAN' PP #6028 White Meidiland Rose	91	2 GAL.	CONTAINER	CITY GUIDE
⊙	RUDBECKIA 'EARLY BIRD GOLD' Early Bird Gold Black-eyed Susan	39	1 GAL.	AS SHOWN	CERTIFIED BY LA
LAWN SEED MIX TO BE ADDED TO EXISTING LAWN WHERE CONSTRUCTION HAS DISTURBER IT- SEE SPECIFICATION					
SL	SOD LAWN - SEE SPECIFICATION				
⊙	3/4"(-) ROCK		3775.9 SQ FT		

**1 PLANTING PLAN**  
 SCALE: 1:20





**PLANT LEGEND**

SYMBOL	NAME	QTY.	SIZE	TYPE	QUAL.
<b>TREES</b>					
+	<i>ACER RUBRUM</i> 'JFS-KW78' Armstrong Gold Maple	9	2 1/2" CAL.	B&B	CERTIFIED BY LA
.	<i>ACER RUBRUM</i> 'FRANKJR. PP 16769' Redpointe Maple	14	2" CAL.	B&B	CERTIFIED BY LA
o	<i>CERCIDIPHYLLUM JAPONICUM</i> Katsura	5	1.5-2" CAL. 3 TRUNK MIN.		CITY GUIDE
o	<i>CHAMACYPARIS NOOTKATENSIS</i> Alaska Cedar	8	8-9' HT.	B&B	CITY GUIDE
o	<i>PINUS CONTORTA</i> 'CONTORTA' Shore Pine	6	8-10' HT.	B&B	CITY GUIDE
o	<i>PRUNUS x YEDOENSIS</i> 'AKEBONO' Akebono Cherry	7	2" CAL.	B&B	CITY GUIDE
<b>EVERGREEN SHRUBS</b>					
o	<i>ARBUTUS UNEDO</i> 'COMPACTA' Killarney Strawberry Bush	28	6.5 GAL.	CONTAINER	CITY GUIDE
o	<i>ESCALLONIA</i> 'COMPAKTA' Compact Escallonia	74	18-21"	CONTAINER	CITY GUIDE
o	<i>ILEX CRENATA</i> 'CONVEXA' Japanese Holly	11	15-18"	CONTAINER	CITY GUIDE
o	<i>JUNIPER CHINENSIS</i> 'TORULOS' Hollywood Juniper	27	5-6' HT.	B&B	CERTIFIED BY LA
o	<i>MAHONIA AQUI</i> 'COMPACTA' Compact Oregon Grape	125	12-15"	CONTAINER	NATIVE TO PNW
o	<i>PICEA ABIES</i> 'NIDIFORMIS' Bird's Nest Spruce	6	21-24"	B&B	CITY GUIDE
o	<i>PIERIS JAPONICA</i> 'MOUNTAIN FIRE' Mountain Fire Pieris	48	30-36"	CONTAINER	CITY GUIDE
o	<i>RHODODENDRON NOVA ZEMBLA</i> Nova Zembla Rhododendron	3	24-30"	CONTAINER	CITY GUIDE
o	<i>RHODODENDRON BLUE BARON</i> Blue Baron Rhododendron	20	15-18"	CONTAINER	CITY GUIDE
<b>DECIDUOUS SHRUBS</b>					
o	<i>ACER CIRCINATUM</i> Vine Maple	6	7-8' HT.	3 TRUNK MIN.	CITY GUIDE
o	<i>BERBERIS THUN.</i> 'CRIMSON PIGMY' Crimson Pigmy Barberry	33	2 GAL.	CONTAINER	CITY GUIDE
o	<i>BERBERIS THUN.</i> 'BOGOZAM' Bonaza Gold Dwarf Barberry	94	2 GAL.	CONTAINER	CITY GUIDE
o	<i>PHYSOCARPUS OPULIFOLIUS</i> 'SEAWARD' Summer Wine® Ninebark	29	5 GAL.	CONTAINER	CERTIFIED BY LA
o	<i>ROSA</i> 'RAD Iko' Red Double Knock Out Shrub Rose	72	2 GAL.	CONTAINER	CITY GUIDE
<b>GRASSES &amp; FERNS</b>					
o	<i>CALAMAGROSTIS A.</i> 'KARL FOERSTER' Karl Foerster's Feather Reed Grass	75	3 GAL.	AS SHOWN	CERTIFIED BY LA
o	<i>HAKONECHLOA MACARA</i> Hakone Grass	51	1 GAL.	CONTAINER	CERTIFIED BY LA
o	<i>HELICTOTRICHON SEMPERVIRENS</i> Blue Oat Grass	175	1 GAL.	CONTAINER	CERTIFIED BY LA
o	<i>MISCANTHUS SINENSIS</i> 'PURPURSCENS' Purple Silver Grass	21	2 GAL.	CONTAINER	CERTIFIED BY LA
<b>GROUND COVERS &amp; PERENNIALS</b>					
o	<i>FRAGARIA VIRGINIANA</i> Wild Strawberry	295	1 GAL.	18" O.C.	CERTIFIED BY LA
o	<i>HEMEROCALLIS</i> 'STELLA DE ORO' Day Lily	33	1 GAL.	AS SHOWN.	CERTIFIED BY LA
o	<i>JUNIPERUS CHINENSIS</i> 'BLUE PACIFIC' Blue Pacific Shore Juniper	52	6" POT	CONTAINER	CERTIFIED BY LA
o	<i>POLYSTICHUM MUNITUM</i> Western Sword Fern	65	2 GAL.	CONTAINER	CITY GUIDE
o	<i>ROSA</i> 'MEICOUBLAN' PP #6028 White Meidiland Rose	91	2 GAL.	CONTAINER	CITY GUIDE
o	<i>RUDEBECKIA</i> 'EARLY BIRD GOLD' Early Bird Gold Black-eyed Susan	39	1 GAL.	AS SHOWN	CERTIFIED BY LA
LAWN SEED MIX TO BE ADDED TO EXISTING LAWN WHERE CONSTRUCTION HAS DISTURBER IT- SEE SPECIFICATION					
SL	SOD LAWN - SEE SPECIFICATION				
o	3/4"(-) ROCK	3775.9 SQ FT			

**1 PLANTING PLAN**  
 SCALE: 1:20



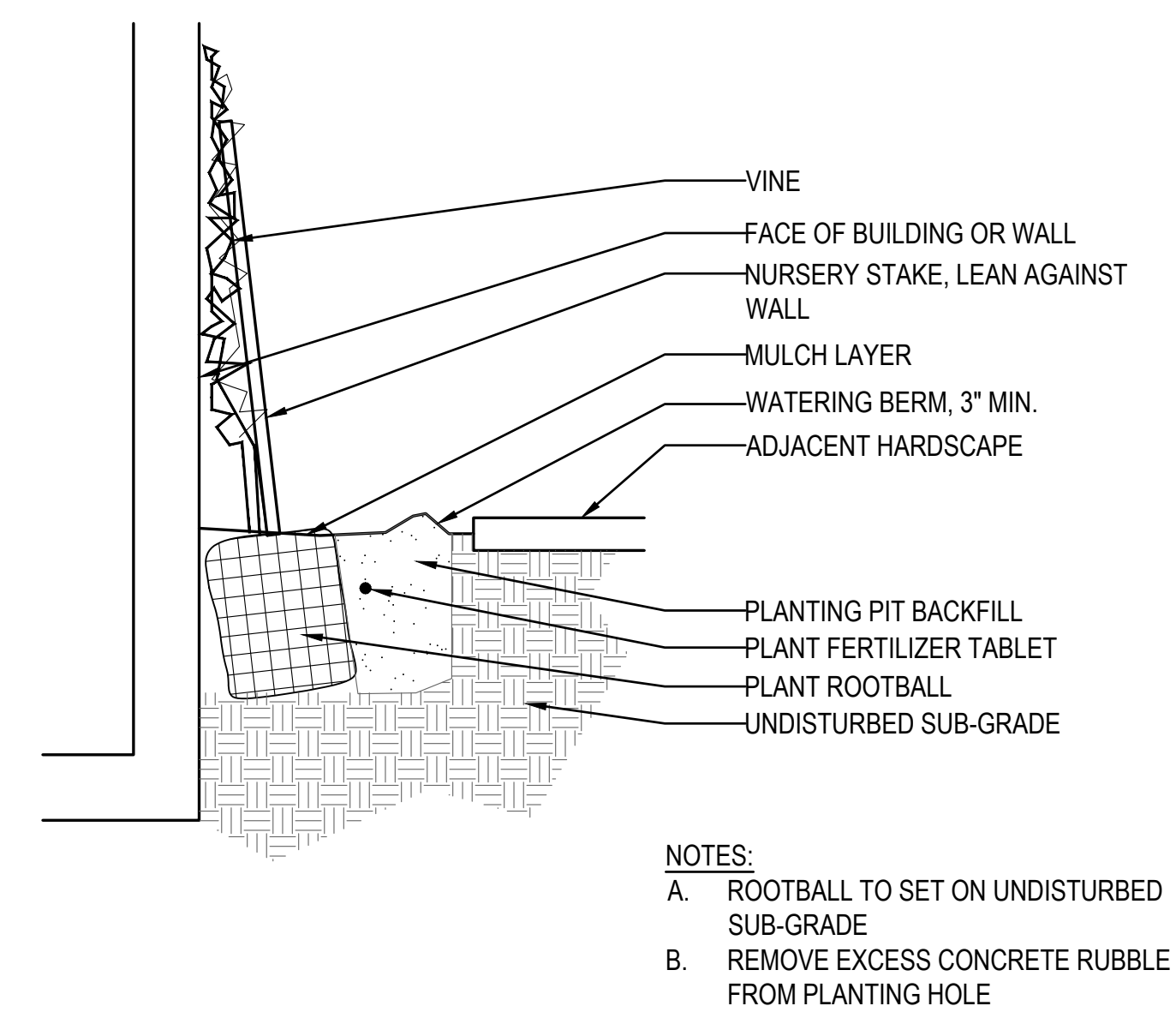
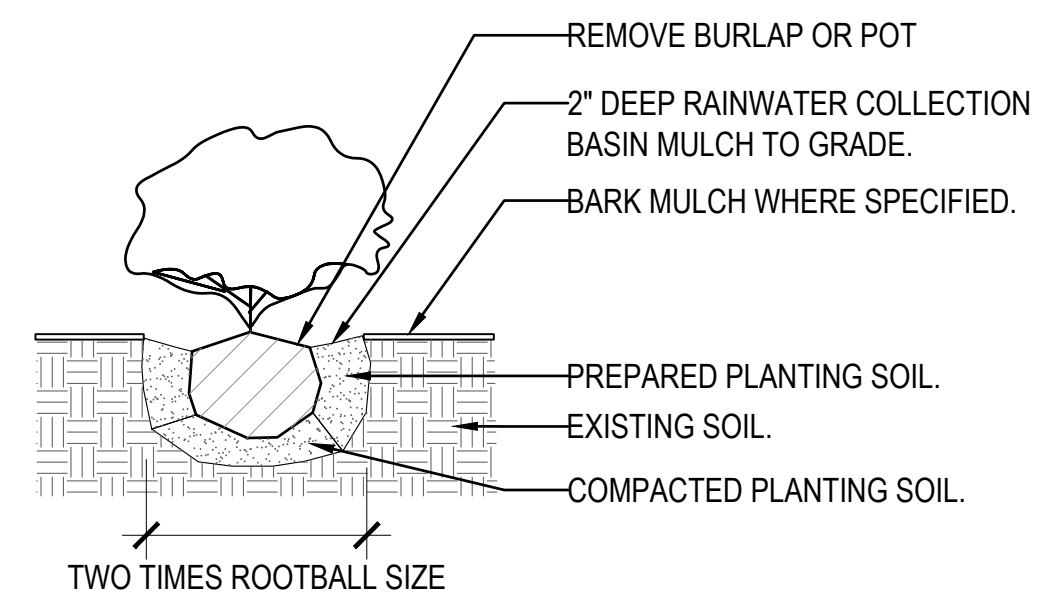
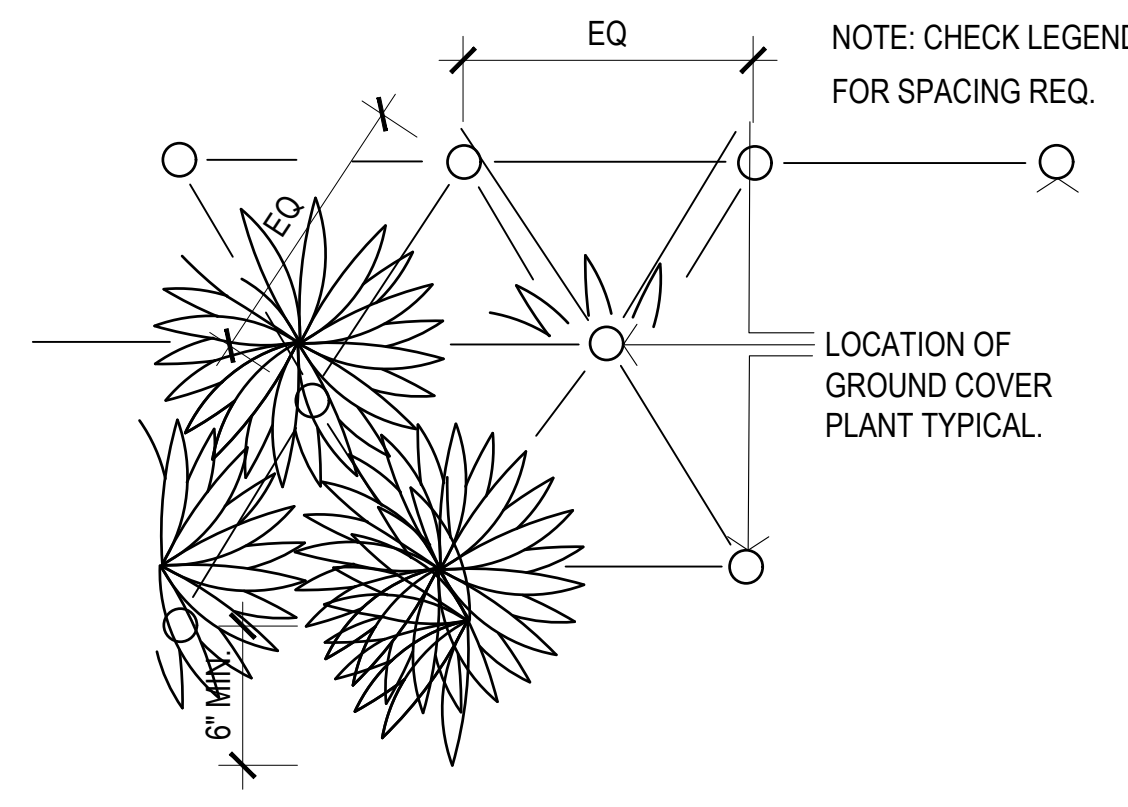
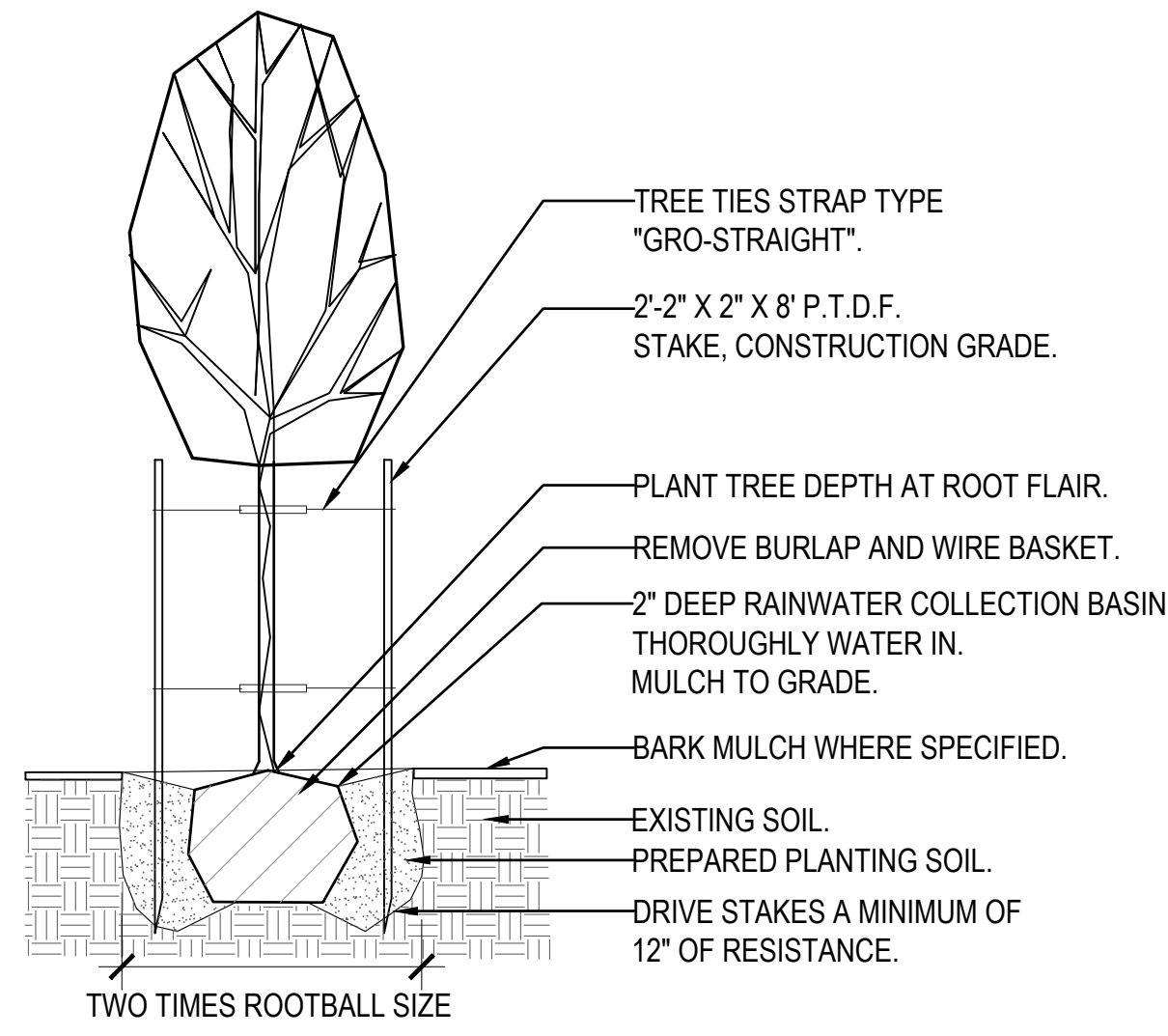
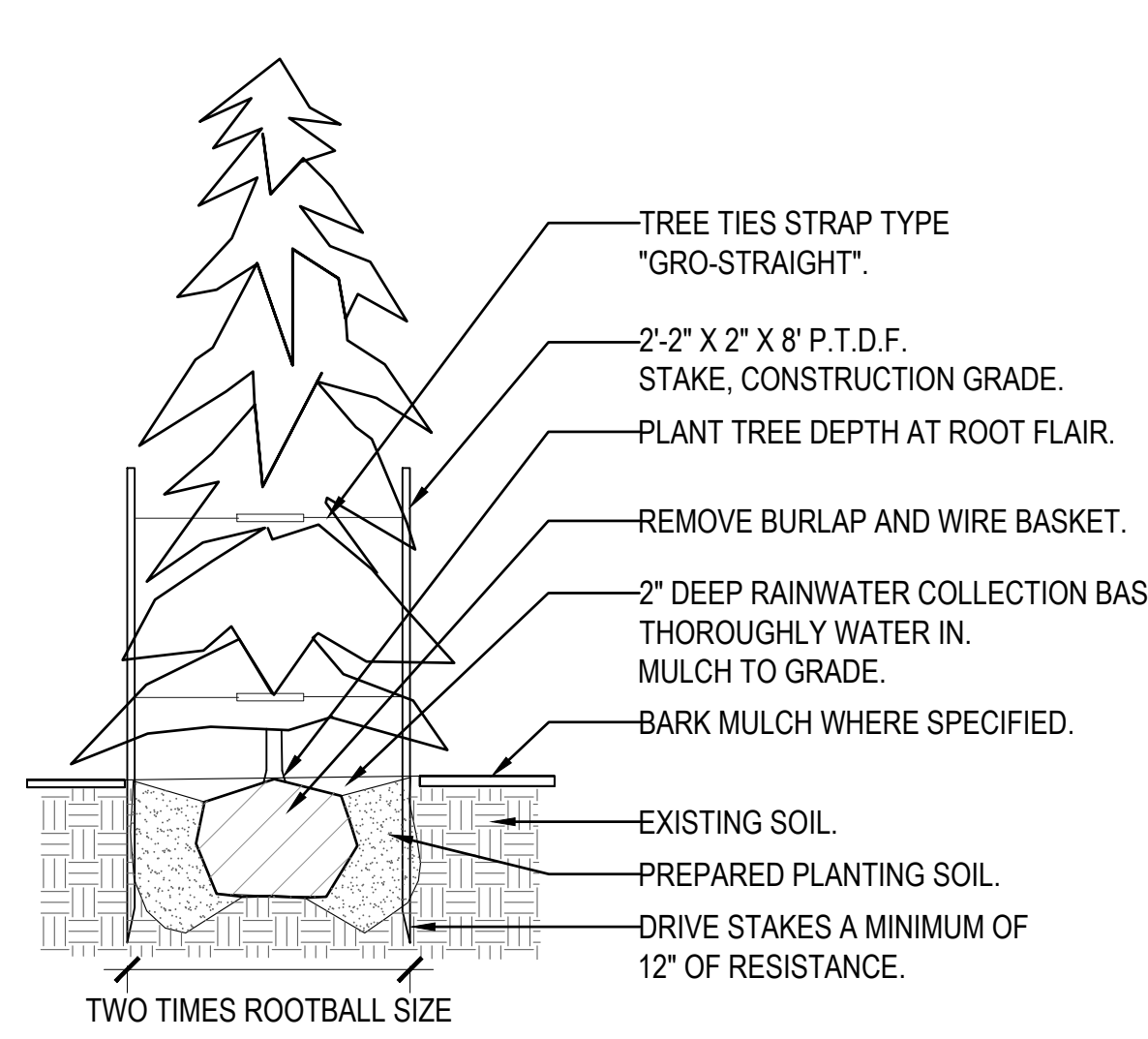
CONSULTANT:  
**MACDONALD**  
 ENVIRONMENTAL PLANNING, P.C.  
 www.mpe.com

PROJECT NUMBER:

SHEET TITLE:

**PLANTING PLAN**

DRAWN BY:  
 DATE CREATED:



1 EVERGREEN TREE DETAIL  
SCALE: 1/8"=1'-0"

1 DECIDUOUS TREE DETAIL  
SCALE: 1/8"=1'-0"

1 GROUNDCOVER PLANTING DETAIL  
SCALE: 1/8"=1'-0"

1 EVERGREEN TREE DETAIL  
SCALE: 1/8"=1'-0"

1 EVERGREEN TREE DETAIL  
SCALE: 1/8"=1'-0"

**LANDSCAPE STANDARDS**

- SECTION 17.56.080, (H2): SURFACE PARKING LOTS MUST HAVE PERIMETER BUFFER STRIP LANDSCAPING OF NOT LESS THAN FOUR FEET IN DEPTH.
- SECTION 17.56.080 (I): ANY OFF-STREET PARKING AREA PROVIDING FIVE OR MORE PARKING SPACES SHALL BE SCREENED FROM VIEW BY A SCREENING HEDGE OR A SIX-FOOT-TALL, SIGHT OBSCURING FENCE ON EACH SIDE THAT ADJOINS A PROPERTY IN ANY R OR NCR ZONES.
- 17.55.080 (A): SCREENING SHALL CONSIST OF EVERGREEN SHRUBS NATIVE TO THE PACIFIC NORTHWEST AND BE SUITABLE TO THE SITE CONDITIONS ARE CERTIFIED BE A NURSERY PERSON OR LICENSED LANDSCAPE ARCHITECT IN THE STATE OF OREGON OR SELECTED FROM THE CITY OF LINCOLN CITY GUIDE TO LANDSCAPE SELECTION. SELECT SHRUBS MUST HAVE A MATURE HEIGHT OF AT LEAST 6 FEET.
- SECTION 17.55.040, (B): FIFTEEN PERCENT OF THE TOTAL GROSS AREA OF THE SITE SHALL BE LANDSCAPED WITH LIVE VEGETATION.  
  
TOTAL SITE AREA= 192,703.7 SQ FT  
TOTAL LANDSCAPED AREA= 30,879.0 SQ FT  
=16% OF THE TOTAL SITE AREA
- SECTION 17.55.040, (B1): LANDSCAPE SHALL INCLUDE 1 TREE PER 20 FEET OF TOTAL LOT PERIMETER, 1 SHRUB PER 10 FEET OF TOTAL LOT PERIMETER, AND LIVING GROUND COVER.
- SECTION 17.55.030, (B1): FOR ALL SINGLE UNIT, ATTACHED SINGLE UNIT, AND MANUFACTURED SWELLINGS AND DUPLEXES, THERE IS REQUIRED A MINIMUM THE SITE SHALL CONTAIN 1 TREE PER 150 FEET OF LOT PERIMETER, 1 SHRUB PER 30 FEET OF LOT PERIMETER, AND LIVING GROUND COVER SUFFICIENT TO COVER 10% OF THE GROSS AREA WITHIN THREE YEARS OF PLANTING.
- SECTION 17.55.040, (B2): EACH PARKING ISLAND MUST CONTAIN AT LEAST 1 TREE, SIZED APPROPRIATELY FOR THE AREA OF THE ISLAND. REMAINDER OF ISLAND AREA MUST HAVE SHRUBS AND OR LIVING OR NONLIVING GROUND COVER.
- SECTION 17.55.050, (4E): PLANTINGS AT THEIR MATURE HEIGHT SHALL NOT BE HIGHER THAN FIVE FEET IF THEY WOULD BLOCK THE VIEW OF THE SHORELINE OF THE PACIFIC OCEAN, SILETZ BAY OR DEVILS LAKE.



CONSULTANT:



PROJECT NUMBER:

SHEET TITLE:

**PLANTING  
DETAILS  
& NOTES**

DRAWN BY:  
DATE CREATED:

CONSULTANT:

PROJECT NUMBER:

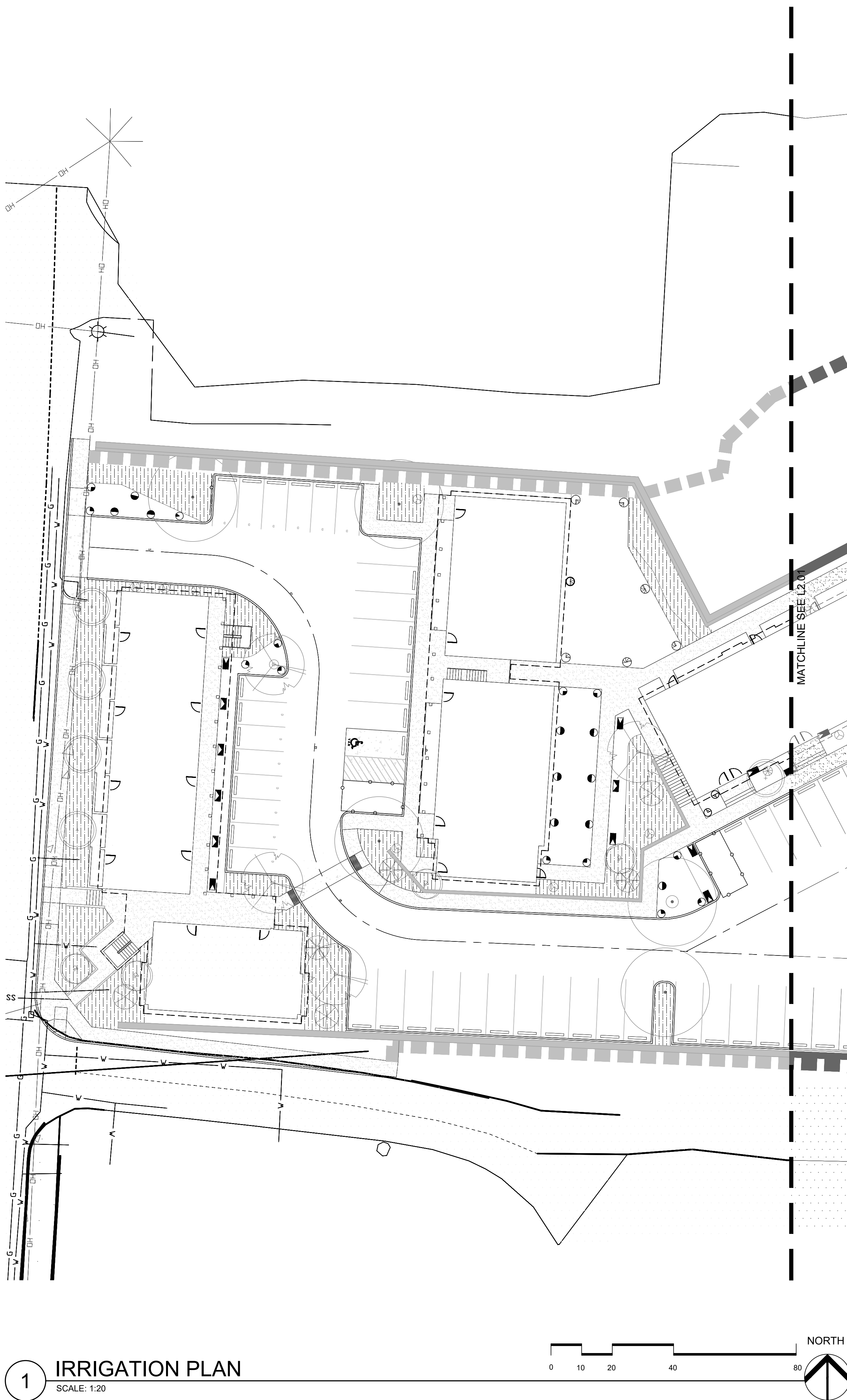
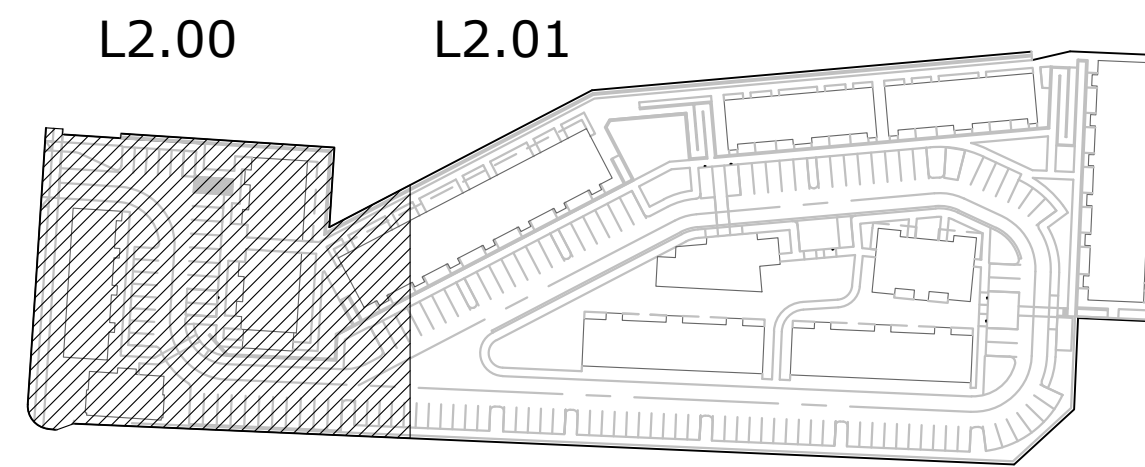
SHEET TITLE:

**IRRIGATION PLAN**

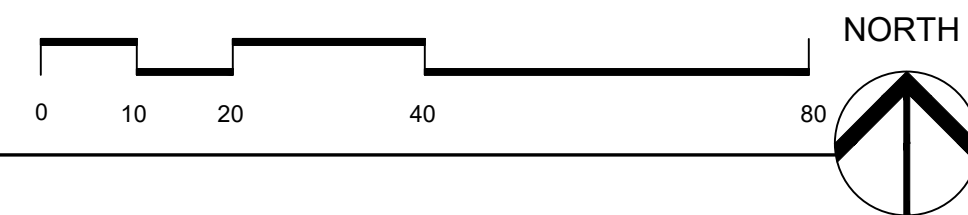
DRAWN BY:  
 DATE CREATED:

SHEET:

**L2.00**



**1 IRRIGATION PLAN**  
 SCALE: 1:20



**IRRIGATION LEGEND**

- ☐ HUNTER I-CORE 16 STATION CONTROLLER (IC-600-M)
- ☐ HUNTER SOLAR SYNC SENSOR
- ⊙ HUNTER SOIL-CLIK SENSOR
- ⊙ HUNTER FLOW-CLIK - FLOW SENSOR
- ⊙ WATER METER BY CIVIL
- ☐ POINT OF CONNECTION
- ☐ 1-1/2" DOUBLE CHECK VALVE ASSEMBLY
- ⊙ HUNTER HQ-44RC-AV QUICK COUPLING VALVE
- ⊕ DRAIN VALVE
- ⊕ GATE VALVE - LINE SIZE
- ⊕ HUNTER ICV MASTER VALVE
- ⊕ HUNTER ICV VALVE - SEE PLAN FOR SIZING
- ⊕ HUNTER ICZ DRIP CONTROL ZONE KIT - SEE PLAN FOR SIZING
- SCHEDULE 40 PVC SLEEVE - SEE DETAIL FOR SIZING
- 2" SCHEDULE 40 MAIN LINE
- CLASS 200 PVC LATERAL LINE - SIZE PER SIZING CHART
- PVC TO DRIPLINE CONNECTION
- ⊙ STATION NUMBER
- ⊙ VALVE SIZE
- ⊙ GPM

**SPRAY HEAD LEGEND**

MODEL #	DESCRIPTION	OPTIMAL OPERATING PRESSURE
---------	-------------	----------------------------

**NOZZLES TO BE INSERTED ONTO HUNTER PRS40 BODIES**

- HUNTER MP800 ROTATORS 40 PSI
  - ⊙ MP-800SR-90-90°
  - ⊙ MP-800SR-90-120°
  - ⊙ MP-800SR-90-150°
  - ⊙ MP-800SR-90-180°
  - ⊙ MP-800SR-90-210°
  - ⊙ MP-800SR-360-360°
- HUNTER MP1000 ROTATORS 40 PSI
  - ⊙ MP-1000-90-90°
  - ⊙ MP-1000-90-120°
  - ⊙ MP-1000-90-150°
  - ⊙ MP-1000-90-180°
  - ⊙ MP-1000-90-210°
  - ⊙ MP-1000-210-210°
  - ⊙ MP-1000-210-240°
  - ⊙ MP-1000-210-270°
  - ⊙ MP-1000-360-360°
- HUNTER MP2000 ROTATORS 40 PSI
  - ⊙ MP-2000-90-90°
  - ⊙ MP-2000-90-120°
  - ⊙ MP-2000-90-150°
  - ⊙ MP-2000-90-180°
  - ⊙ MP-2000-90-210°
  - ⊙ MP-2000-210-210°
  - ⊙ MP-2000-210-240°
  - ⊙ MP-2000-210-270°
  - ⊙ MP-2000-360-360°
- HUNTER MP3000 ROTATORS 40 PSI
  - ⊙ MP-3000-90-90°
  - ⊙ MP-3000-90-120°
  - ⊙ MP-3000-90-150°
  - ⊙ MP-3000-90-180°
  - ⊙ MP-3000-90-210°
  - ⊙ MP-3000-210-210°
  - ⊙ MP-3000-210-240°
  - ⊙ MP-3000-210-270°
  - ⊙ MP-3000-360-360°
- MP-LCS-515 40 PSI
- MP-RCS-515 40 PSI
- MP-SS-530 40 PSI
- MP-CORNER 40 PSI
- HUNTER PLD TUBING WITH EMITTERS EVERY 18" AT 1.0 GPH. SEE DETAIL X / L2.1 FOR TUBING LAYOUT.

**IRRIGATION NOTES**

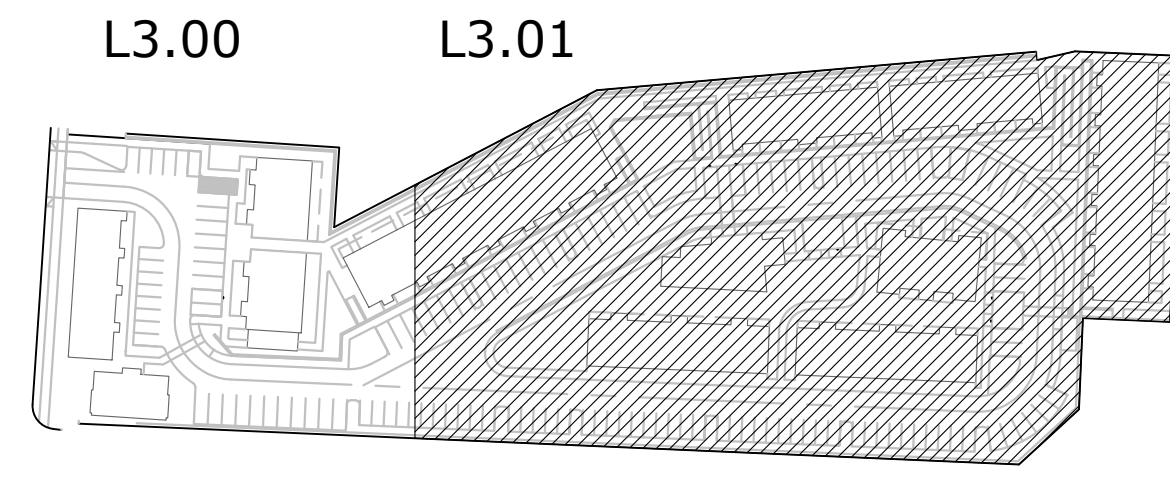
- LOCATE CONTROLLER IN APPROXIMATE LOCATION SHOWN. VERIFY WITH ARCHITECT. WALL MOUNT CONTROLLER AT EYE LEVEL. PROVIDE SEPARATE 15 AMP CIRCUIT AND 120 V.A.C. POWER TO CONTROLLER. PROVIDE 1" CONDUIT FROM CONTROLLER TO NEAREST PLANTING AREA AS SHOWN. EXTEND 24" INTO PLANTING AREA, 18" BELOW GRADE, CAP AND FLAG.
- ADJUST ALL IRRIGATION HEADS TO PROVIDE MAXIMUM COVERAGE, MINIMUM OVERSPRAY AND NO FOGGING. SET ALL HEADS BACK FROM CURBS, PAVING AND WALLS.
- LOCATION OF IRRIGATION MAINLINE, LATERALS AND SLEEVING ARE SCHEMATIC ONLY, AND SHALL OCCUR IN PLANTING AREAS UNLESS SLEEVING IS SHOWN. MAKE MINOR CHANGES TO COORDINATE WITH ACTUAL AS-BUILT CONDITIONS AND DIMENSIONS.
- INSTALL ALL COMPONENTS ACCORDING TO MANUFACTURER'S INSTALLATION RECOMMENDATIONS.
- REFER TO IRRIGATION SPECIFICATIONS FOR ADDITIONAL REQUIREMENTS.

SIZE LATERAL LINES ACCORDING TO THE FOLLOWING SCHEDULE:

LATERAL LINE SIZING CHART CLASS 200		
GPM	SYMBOL	SIZE
0-10	---	3/4"
10-17	---	1"
17-36	---	1 1/2"
36-56	---	2"
56-83	---	2 1/2"

**ZONE SUMMARY**

ZONE NUMBER	GPM	VALVE SIZE
1	XX.X	1-1/2"
2	XX.X	1"
3	XX.X	1-1/2"
4	XX.X	1-1/2"
5	XX.X	1"
6	XX.X	1-1/2"
7	XX.X	1-1/2"
8	XX.X	1"
9	XX.X	1-1/2"



**IRRIGATION LEGEND**

- HUNTER I-CORE 16 STATION CONTROLLER (IC-600-M)
- HUNTER SOLAR SYNC SENSOR
- HUNTER SOIL-CLICK SENSOR
- HUNTER FLOW-CLICK - FLOW SENSOR
- WATER METER BY CIVIL
- POINT OF CONNECTION
- 1-1/2" DOUBLE CHECK VALVE ASSEMBLY
- HUNTER HQ-44RC-AV QUICK COUPLING VALVE
- DRAIN VALVE
- GATE VALVE - LINE SIZE
- HUNTER ICV MASTER VALVE
- HUNTER ICV VALVE - SEE PLAN FOR SIZING
- HUNTER ICZ DRIP CONTROL ZONE KIT - SEE PLAN FOR SIZING
- SCHEDULE 40 PVC SLEEVE - SEE DETAIL FOR SIZING
- 2" SCHEDULE 40 MAIN LINE
- CLASS 200 PVC LATERAL LINE - SIZE PER SIZING CHART
- PVC TO DRIPLINE CONNECTION
- STATION NUMBER
- VALVE SIZE
- GPM

**SPRAY HEAD LEGEND**

MODEL #	DESCRIPTION	OPTIMAL OPERATING PRESSURE
---------	-------------	----------------------------

**NOZZLES TO BE INSERTED ONTO HUNTER PRS40 BODIES**

- HUNTER MP800 ROTATORS 40 PSI**
  - MP-800SR-90-90°
  - MP-800SR-90-120°
  - MP-800SR-90-150°
  - MP-800SR-90-180°
  - MP-800SR-90-210°
  - MP-800SR-360-360°
- HUNTER MP1000 ROTATORS 40 PSI**
  - MP-1000-90-90°
  - MP-1000-90-120°
  - MP-1000-90-150°
  - MP-1000-90-180°
  - MP-1000-90-210°
  - MP-1000-210-210°
  - MP-1000-210-240°
  - MP-1000-210-270°
  - MP-1000-360-360°
- HUNTER MP2000 ROTATORS 40 PSI**
  - MP-2000-90-90°
  - MP-2000-90-120°
  - MP-2000-90-150°
  - MP-2000-90-180°
  - MP-2000-90-210°
  - MP-2000-210-210°
  - MP-2000-210-240°
  - MP-2000-210-270°
  - MP-2000-360-360°
- HUNTER MP3000 ROTATORS 40 PSI**
  - MP-3000-90-90°
  - MP-3000-90-120°
  - MP-3000-90-150°
  - MP-3000-90-180°
  - MP-3000-90-210°
  - MP-3000-210-210°
  - MP-3000-210-240°
  - MP-3000-210-270°
  - MP-3000-360-360°
- MP-LCS-515 40 PSI
- MP-RCS-515 40 PSI
- MP-SS-530 40 PSI
- MP-CORNER 40 PSI
- HUNTER PLD TUBING WITH EMITTERS EVERY 18" AT 1.0 GPH. SEE DETAIL X / L2.1 FOR TUBING LAYOUT.

**IRRIGATION NOTES**

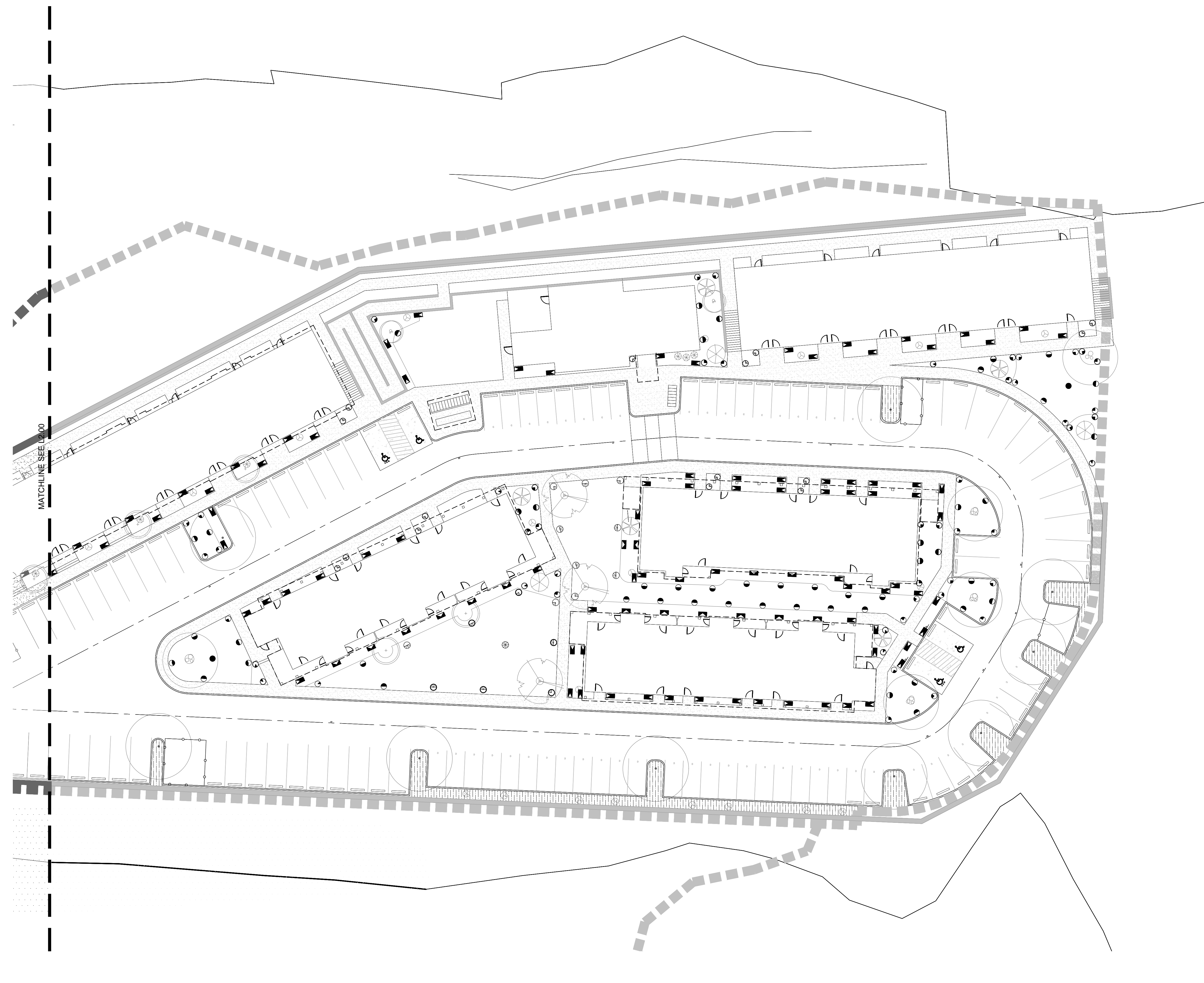
- LOCATE CONTROLLER IN APPROXIMATE LOCATION SHOWN. VERIFY WITH ARCHITECT. WALL MOUNT CONTROLLER AT EYE LEVEL. PROVIDE SEPARATE 15 AMP CIRCUIT AND 120 V.A.C. POWER TO CONTROLLER. PROVIDE 1" CONDUIT FROM CONTROLLER TO NEAREST PLANTING AREA AS SHOWN. EXTEND 24" INTO PLANTING AREA, 18" BELOW GRADE, CAP AND FLAG.
- ADJUST ALL IRRIGATION HEADS TO PROVIDE MAXIMUM COVERAGE, MINIMUM OVERSPRAY AND NO FOGGING. SET ALL HEADS BACK FROM CURBS, PAVING AND WALLS.
- LOCATION OF IRRIGATION MAINLINE, LATERALS AND SLEEVING ARE SCHEMATIC ONLY, AND SHALL OCCUR IN PLANTING AREAS UNLESS SLEEVING IS SHOWN. MAKE MINOR CHANGES TO COORDINATE WITH ACTUAL AS-BUILT CONDITIONS AND DIMENSIONS.
- INSTALL ALL COMPONENTS ACCORDING TO MANUFACTURER'S INSTALLATION RECOMMENDATIONS.
- REFER TO IRRIGATION SPECIFICATIONS FOR ADDITIONAL REQUIREMENTS.

SIZE LATERAL LINES ACCORDING TO THE FOLLOWING SCHEDULE:

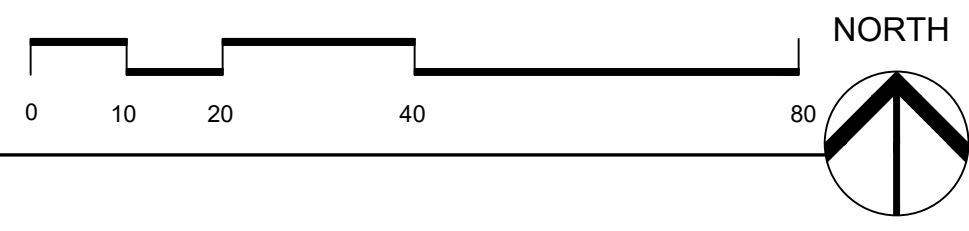
LATERAL LINE SIZING CHART CLASS 200		
GPM	SYMBOL	SIZE
0-10	---	3/4"
10-17	-/-	1"
17-36	-/-	1 1/2"
36-56	-/-	2"
56-83	-/-	2 1/2"

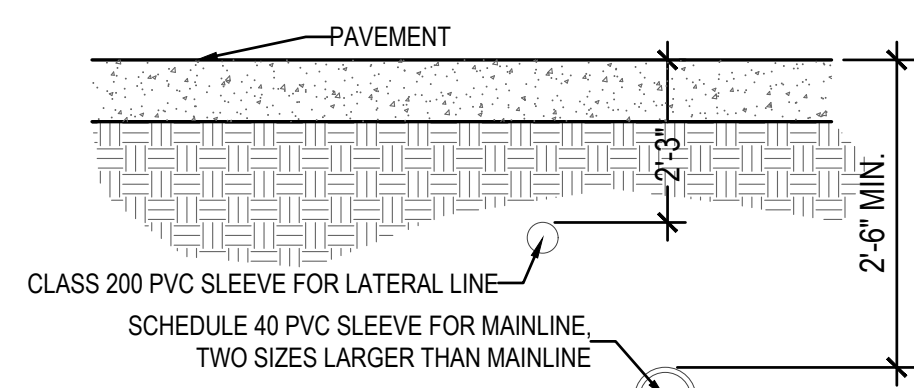
**ZONE SUMMARY**

ZONE NUMBER	GPM	VALVE SIZE
1	XX.X	1-1/2"
2	XX.X	1"
3	XX.X	1-1/2"
4	XX.X	1-1/2"
5	XX.X	1"
6	XX.X	1-1/2"
7	XX.X	1-1/2"
8	XX.X	1"
9	XX.X	1-1/2"

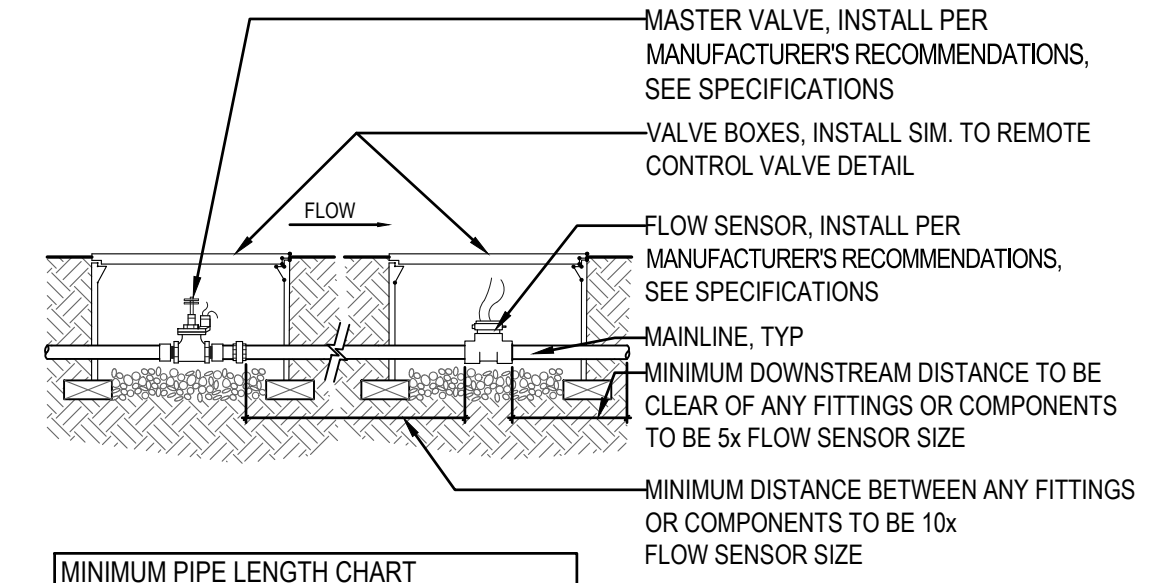
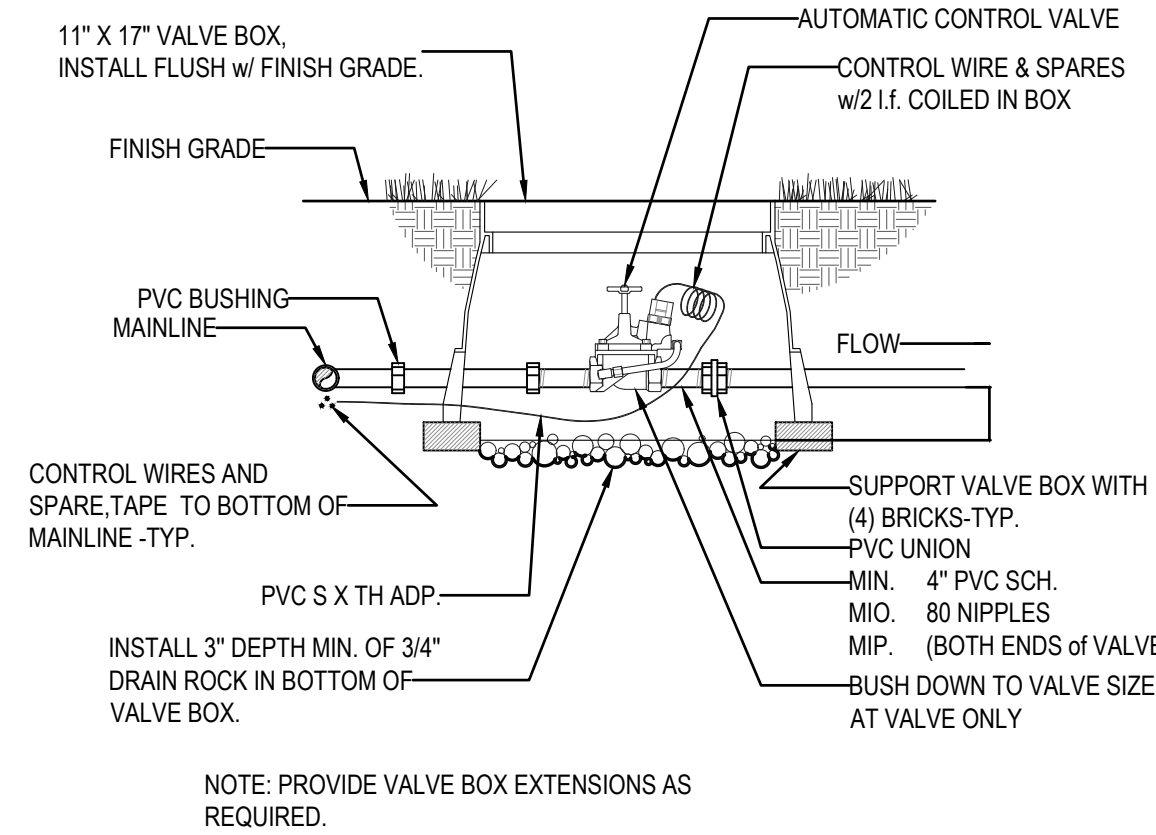
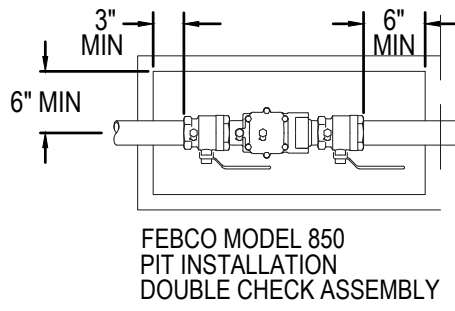
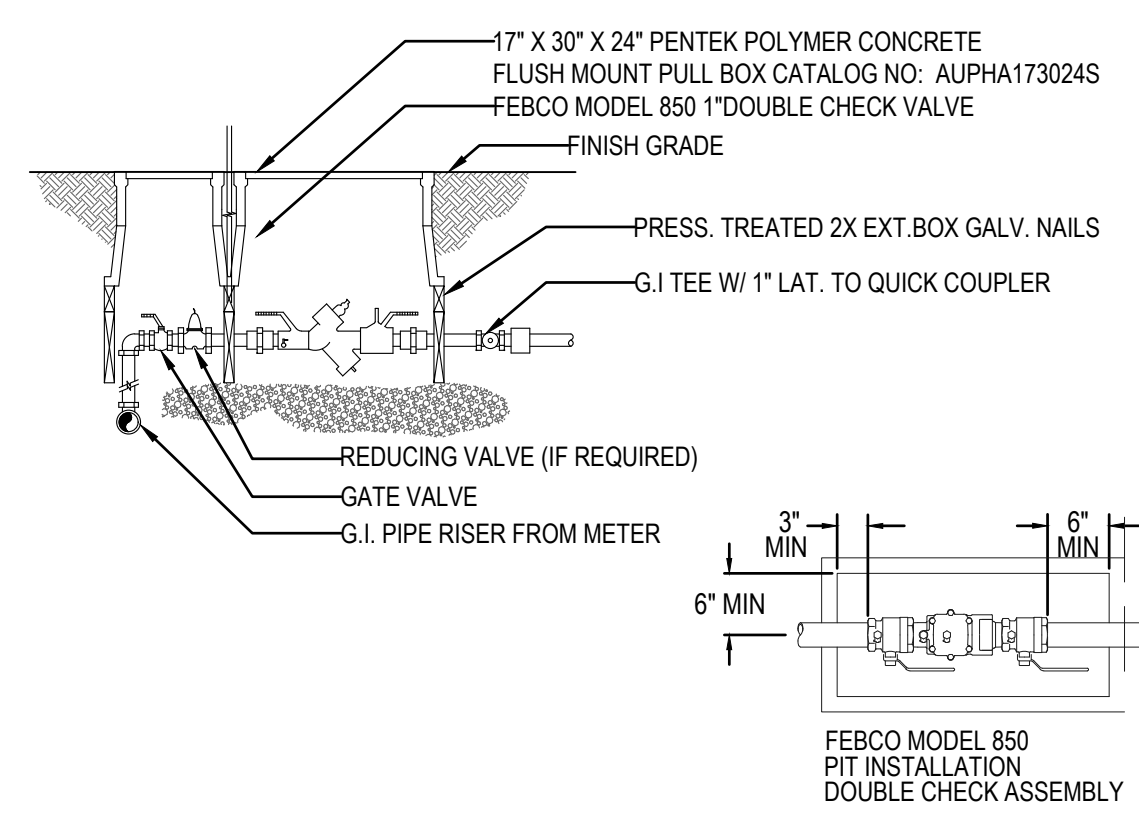


**1 IRRIGATION PLAN**  
 SCALE: 1:20



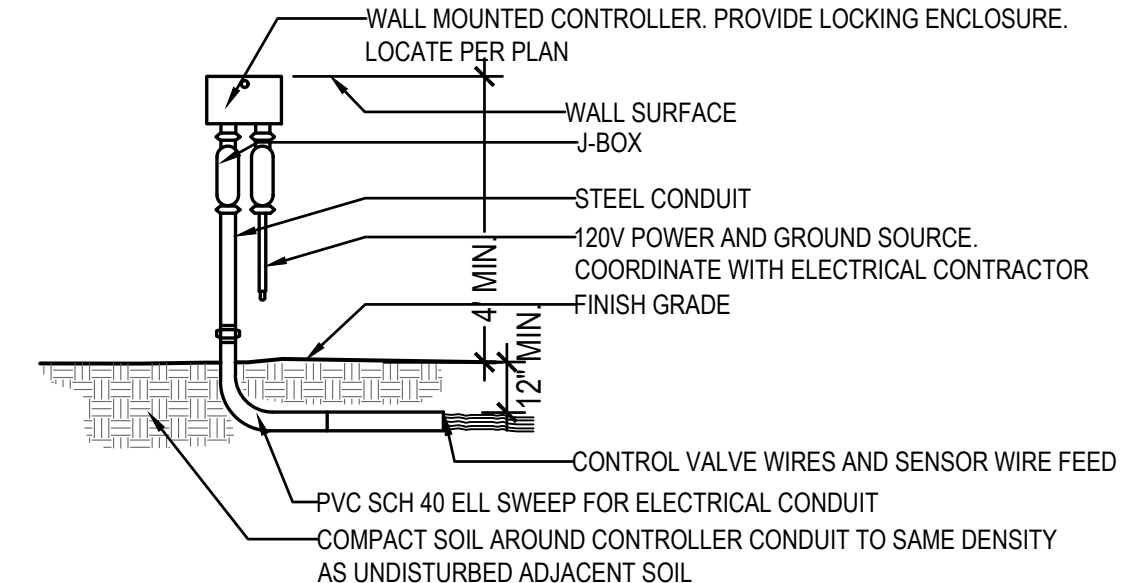


- SEE PLANS FOR SLEEVE LOCATIONS.
- ALL SLEEVES SHALL EXTEND 5' BEYOND ANY FLATWORK
- CAP ENDS OF SLEEVES PRIOR TO BACKFILLING
- MARK EACH SLEEVE END WITH A METAL T-POST
- INSTALL A 1/4" NYLON PULL CORD EXTENDING BEYOND MEDIAN CURBS
- INSTALL 1 PVC SLEEVE FOR MAINLINE AND OR CURBS SHOWN ON PLANS, 10' BEYOND MEDIAN CURBS
- IF THREE SLEEVES ARE NOTED ON PLANS, ADD (1)-2" PVC SLEEVE FOR LATERAL PIPE
- SLEEVING ON PLANS IS SHOWN IN DIAGRAMMATIC SLEEVES ARE SIDE BY SIDE IN SAME TRENCH AND MAY DIFFER IN ACTUAL FIELD CONDITIONS. ENTIRE LENGTH OF SLEEVE EXTENDING 7' ABOVE FINISHED GRADE & PAINTED ORANGE
- IF SLEEVES INSTALLED BY BORING, THE MAIN SLEEVE SHALL BE LARGE ENOUGH TO CONTAIN TWO SMALLER
- PERMANENTLY MARK CURB OR PAVEMENT BY SAW CUTTING OR SCORING AN "X" IN THE CONCRETE AT THE LOCATION OF THE SLEEVE.



PIPE SIZE	UPSTREAM LENGTH	DOWNSTREAM LENGTH
1"	10"	5"
1/2"	12"	6"
1/2"	15"	7 1/2"
2"	20"	10"
3"	30"	15"

- NOTES:
- RUN WIRES AND MAKE WIRE CONNECTIONS FROM MASTER VALVE AND FLOW SENSOR TO CONTROLLER AS SPECIFIED AND PER CONTROLLER MANUFACTURER'S RECOMMENDATIONS.



- NOTES:
- INSTALL WIRING PER LOCAL CODE AND MFG. RECOMMENDATIONS
  - PROVIDE LIGHTNING PROTECTION AND GROUNDING FOR CONTROLLER
  - PROVIDE LOCK FOR CONTROLLER ENCLOSURE
  - PLACE WEATHERPROOF COPY OF CONTROLLER SCHEDULE INSIDE ENCLOSURE
  - ALLOW 3 FT. CLEARANCE IN FRONT OF CONTROLLER ENCLOSURE DOOR FOR ACCESS
  - PROVIDE WATERPROOF SEALANT FOR ALL CONTROLLER OPENINGS

**1 SLEEVE DETAIL**

SCALE: 3/8"=1'-0"

**2 DOUBLE CHECK VALVE ASSEMBLY**

SCALE: NTS

**3 REMOTE CONTROL VALVE**

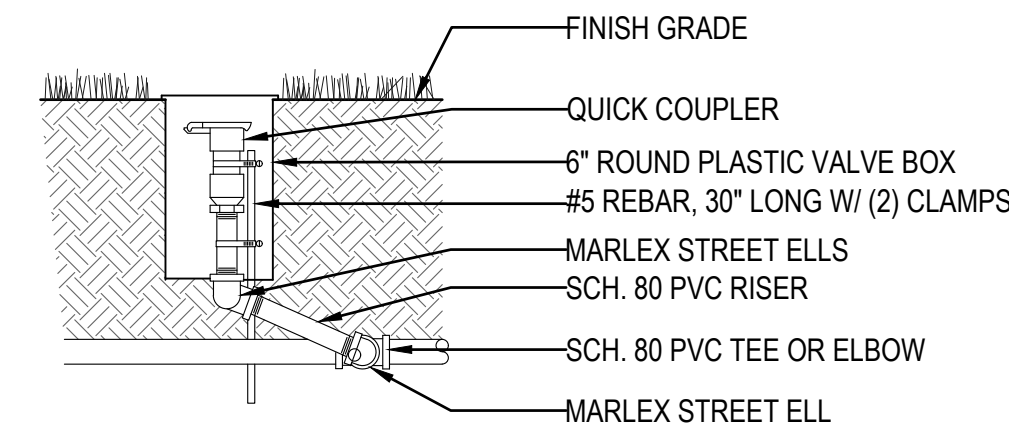
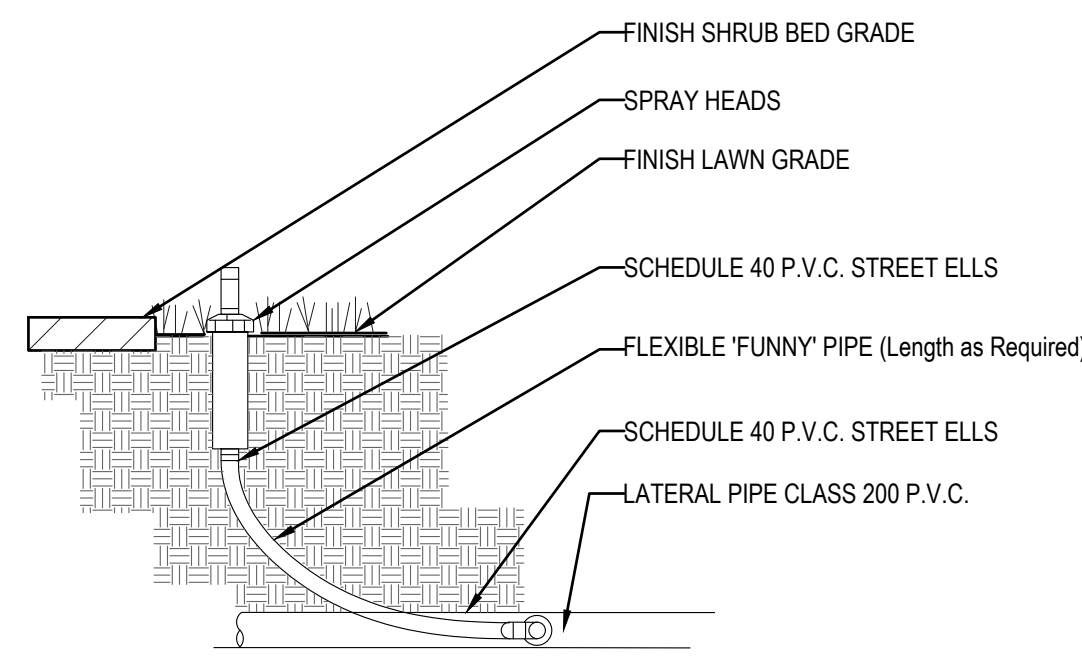
SCALE: NTS

**4 MASTER VALVE / FLOW SENSOR**

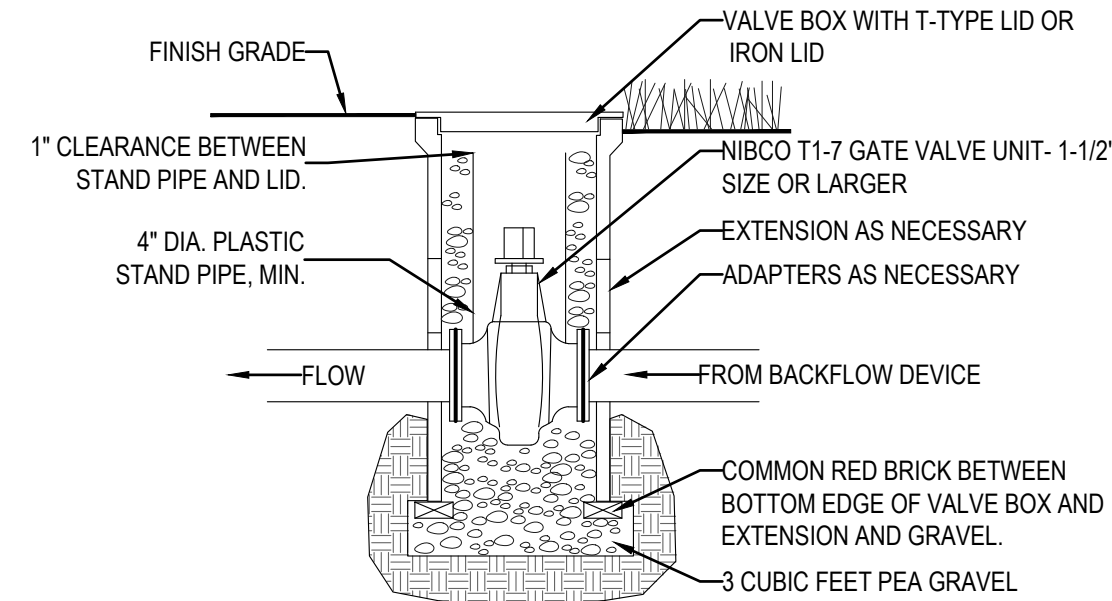
SCALE: NTS

**5 CONTROLLER, WALL MOUNT**

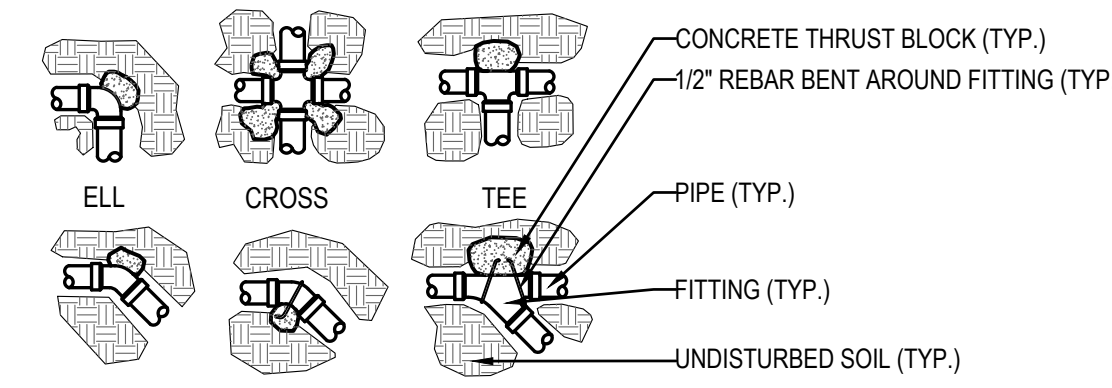
SCALE: NTS



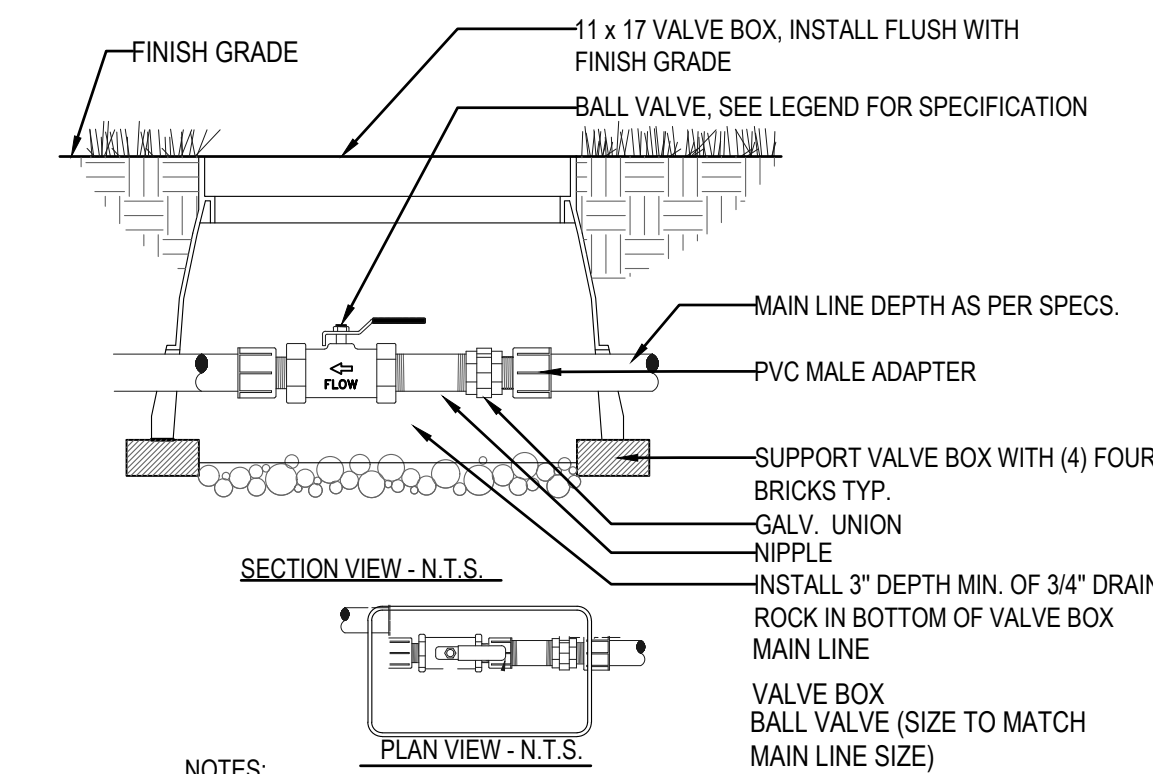
- NOTES:
- SET VALVE BOX PARALLEL W/ GRADE
  - SEAL THREAD JOINTS WITH TEFLON
  - DO NOT REST VALVE BOX ON MAIN LINE



**SECTION**



- WYE
- SUPPLY LINES 3-INCHES IN DIAMETER AND LARGER SHALL RECEIVE CONCRETE THRUST BLOCKS
  - SEE SPECIFICATIONS FOR AMOUNT OF CONCRETE TO BE USED FOR THRUST LOCK
  - ALL THRUST BLOCKS SHALL BEAR AGAINST UNDISTURBED SOIL
  - CONCRETE: MIN. CLASS 8 (2,000 PSI) CONCRETE
  - THRUST BLOCKS: MIN. 1 CU. FT. CONCRETE. PIPE SHALL NOTE "DO NOT ENCASED IN CONCRETE"
  - WRAP FITTINGS IN CONTACT WITH CONCRETE WITH PIPE TAPE
  - USE THRUST BLOCKS IN LOW AREAS WITH DRASTIC ELEVATION GAIN ON THE MAINLINE.



- NOTES:
- BOX TO BE INSTALLED AS TO ALLOW FOR PROPER OPERATION OF BALL VALVE
  - INSTALL AT RIGHT ANGLE TO HARDSCAPE EDGE. INSTALL VALVE OFF-CENTER IN BOX
  - INSTALL VALVE BOX EXTENSIONS AS REQUIRED TO ACHIEVE PROPER VALVE INSTALLATION AT MAIN LINE DEPTH.

**6 POP UP SPRAY SPRINKLER**

SCALE: NTS

**7 QUICK COUPLER**

SCALE: NTS

**8 NIBCO GATE VALVE**

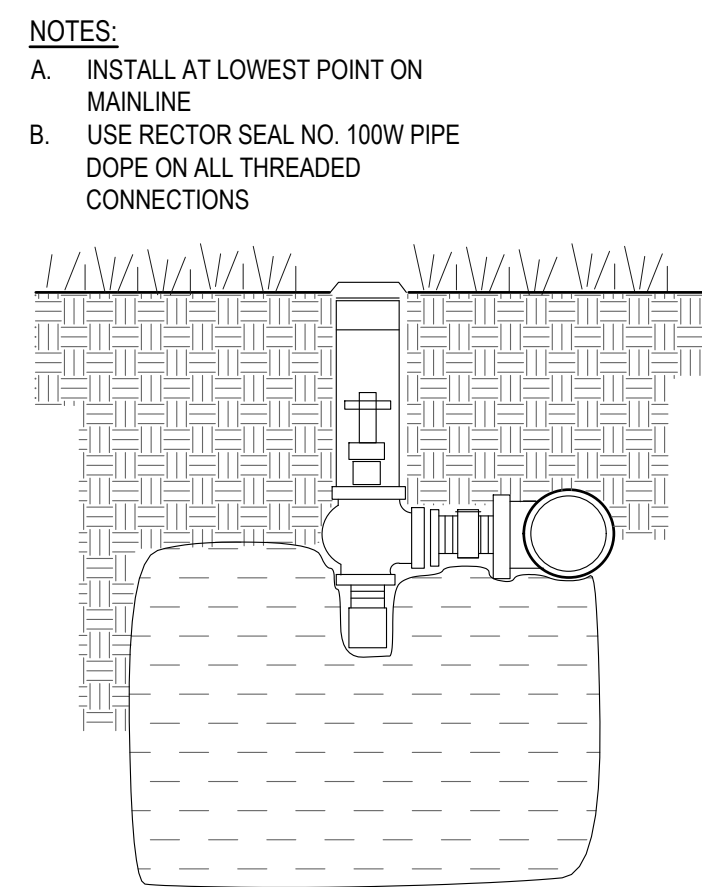
SCALE: NTS

**9 THRUST BLOCKS**

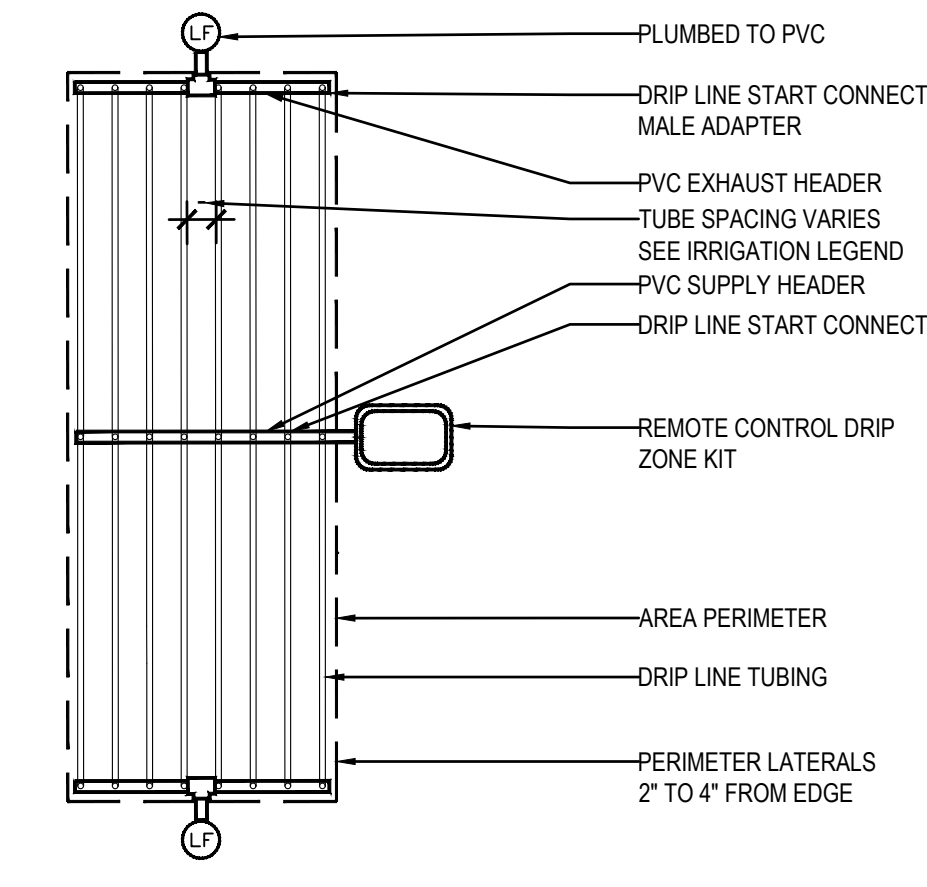
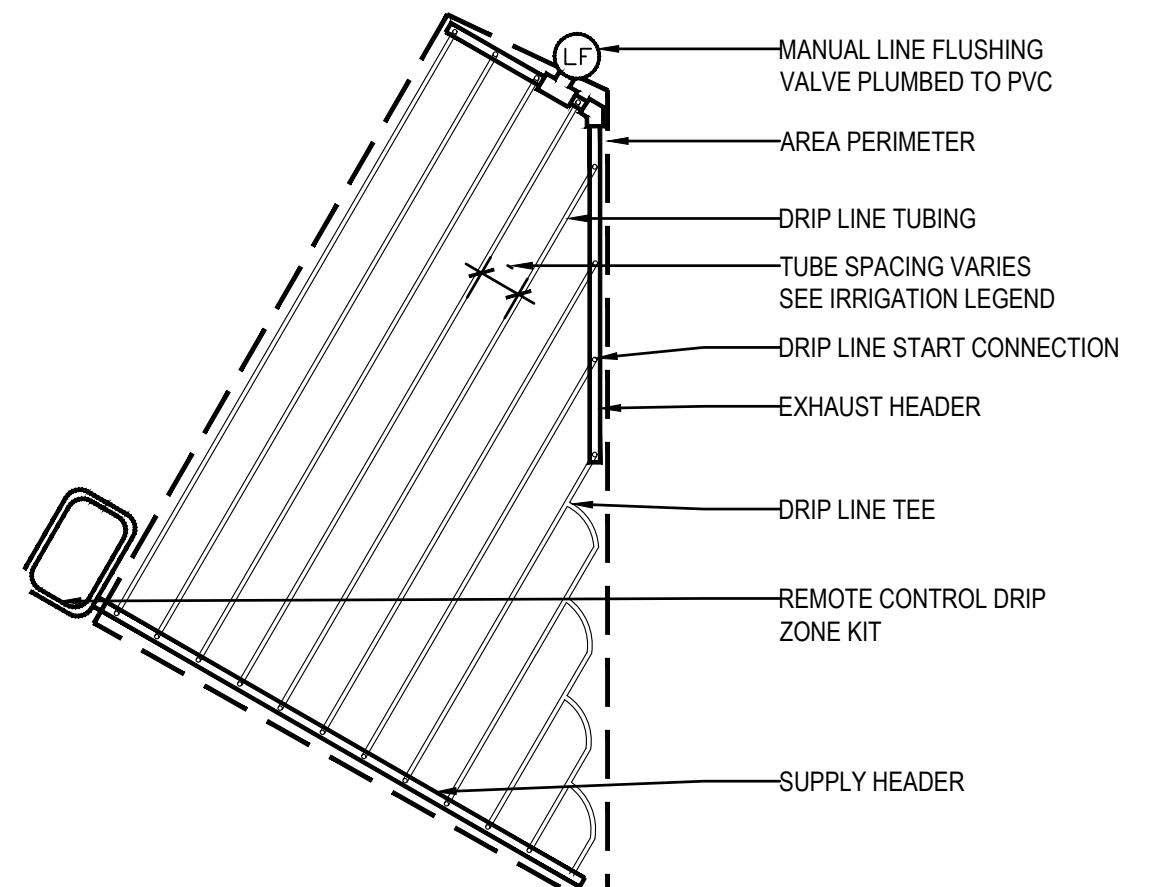
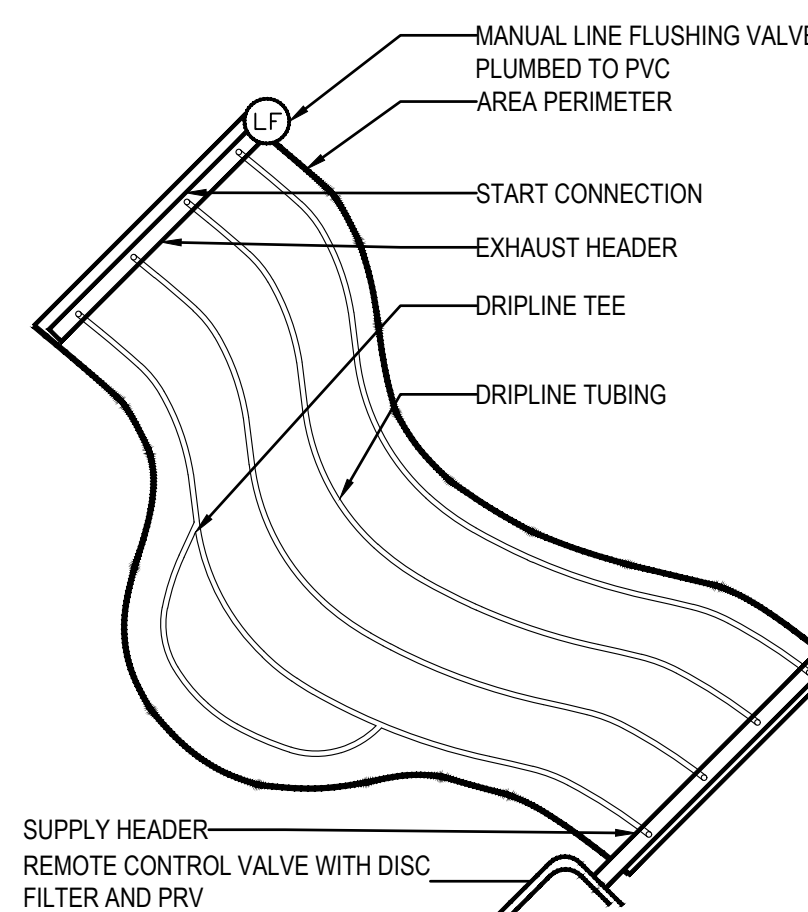
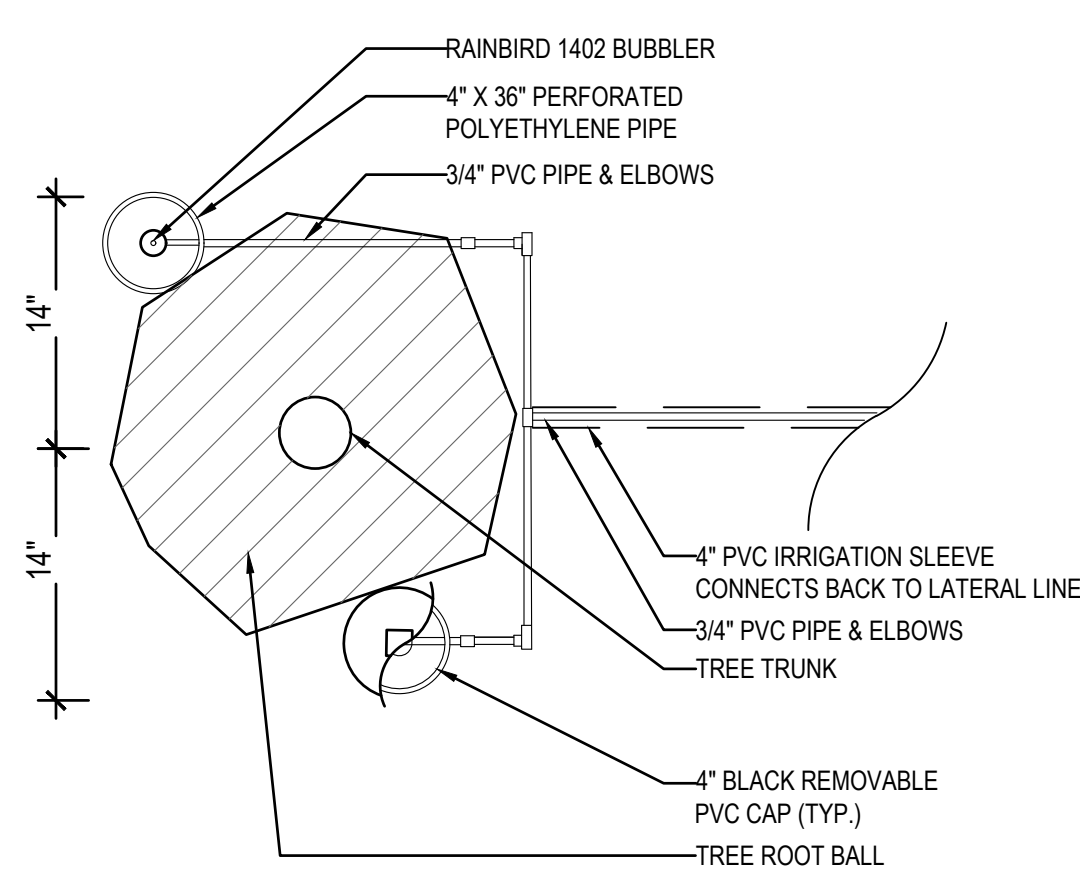
SCALE: NTS

**10 ISOLATION VALVE**

SCALE: NTS



- NOTES:
- INSTALL AT LOWEST POINT ON MAINLINE
  - USE RECTOR SEAL NO. 100W PIPE DOPE ON ALL THREADED CONNECTIONS



**11 MANUAL DRAIN VALVE**

SCALE: NTS

**12 TREE BUBBLER PLAN DETAIL**

SCALE: NTS

**13 IRREGULAR DRIP LINE LAYOUT**

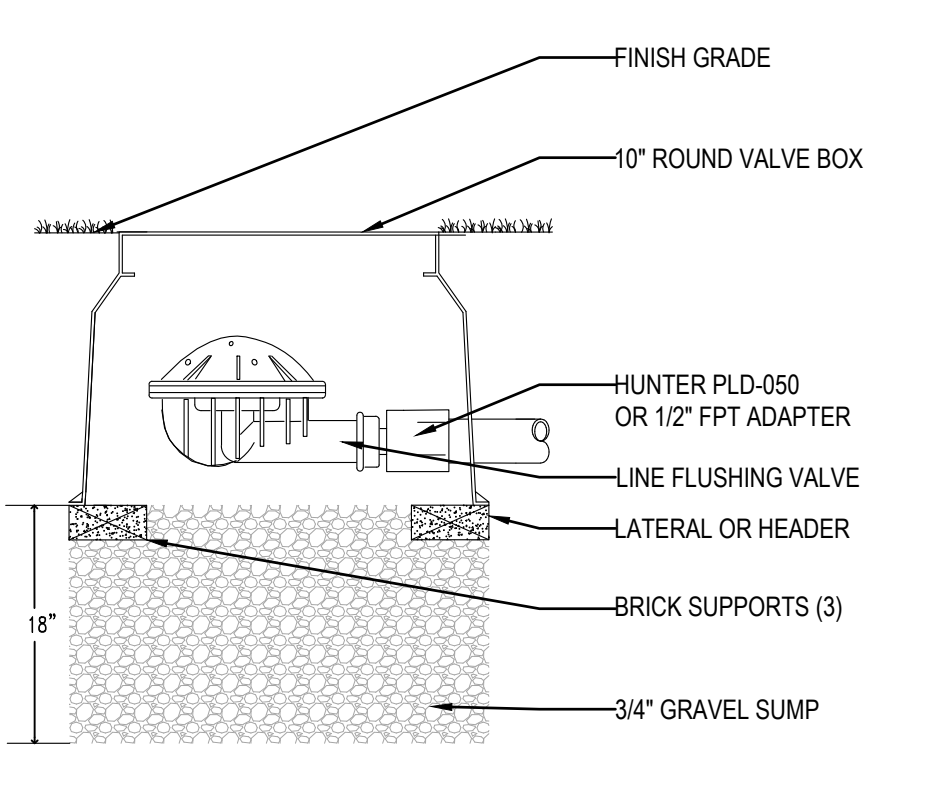
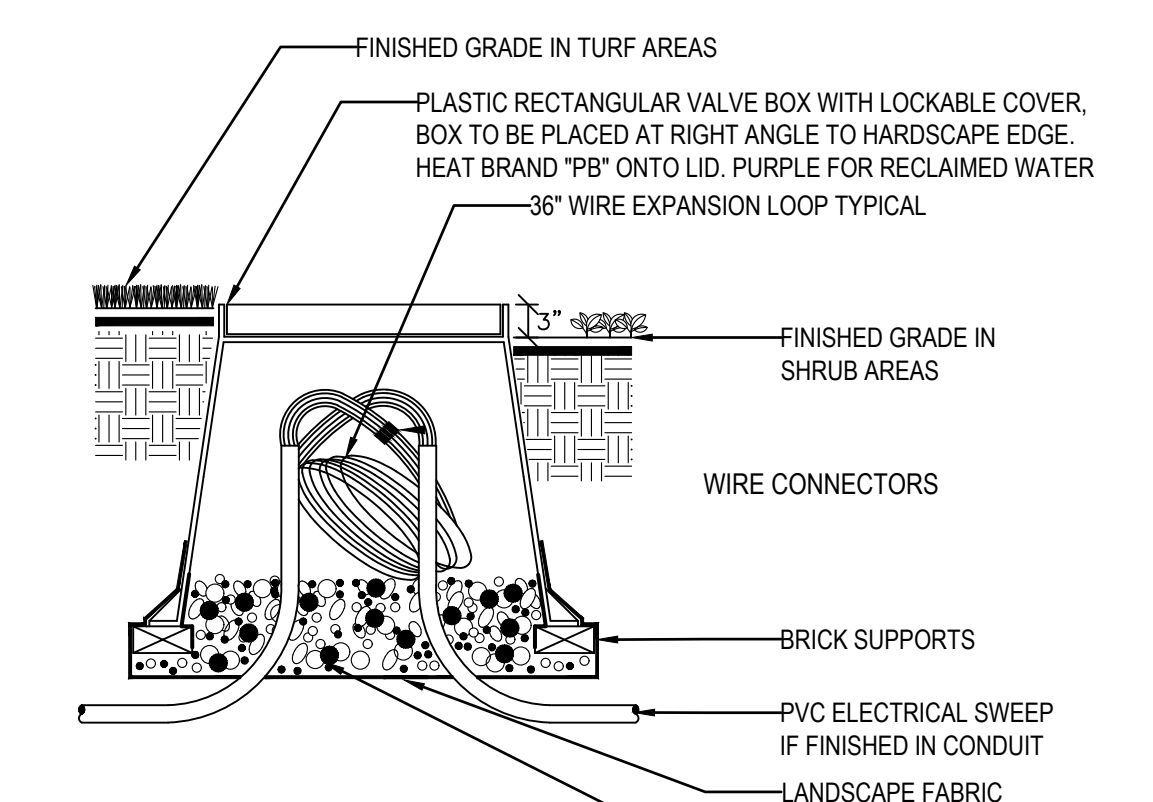
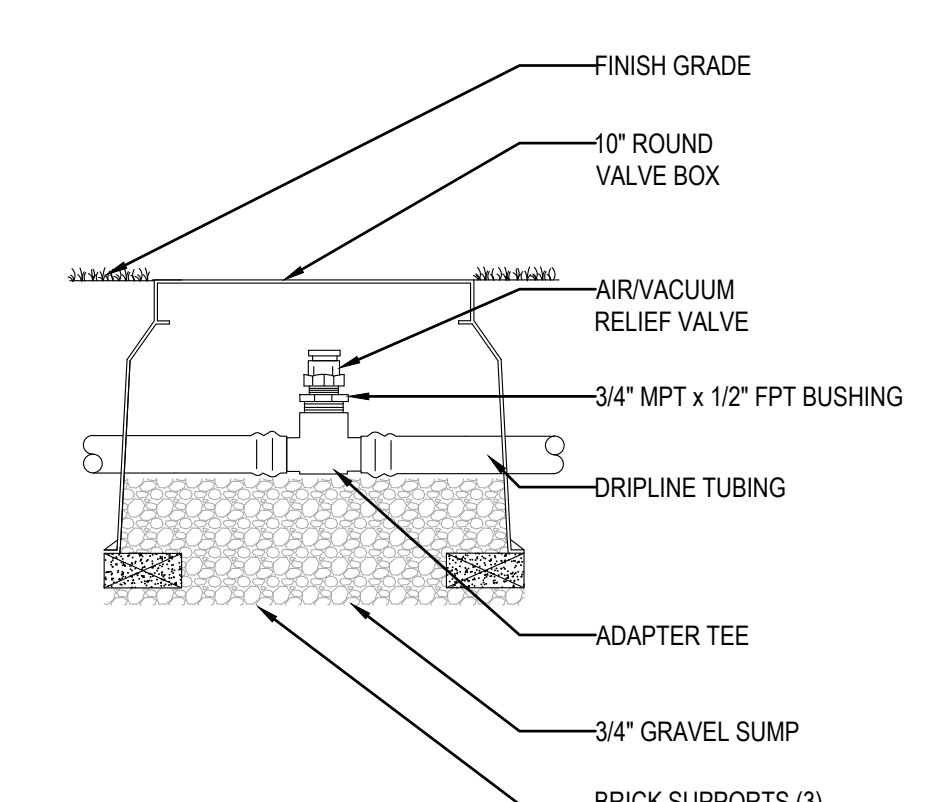
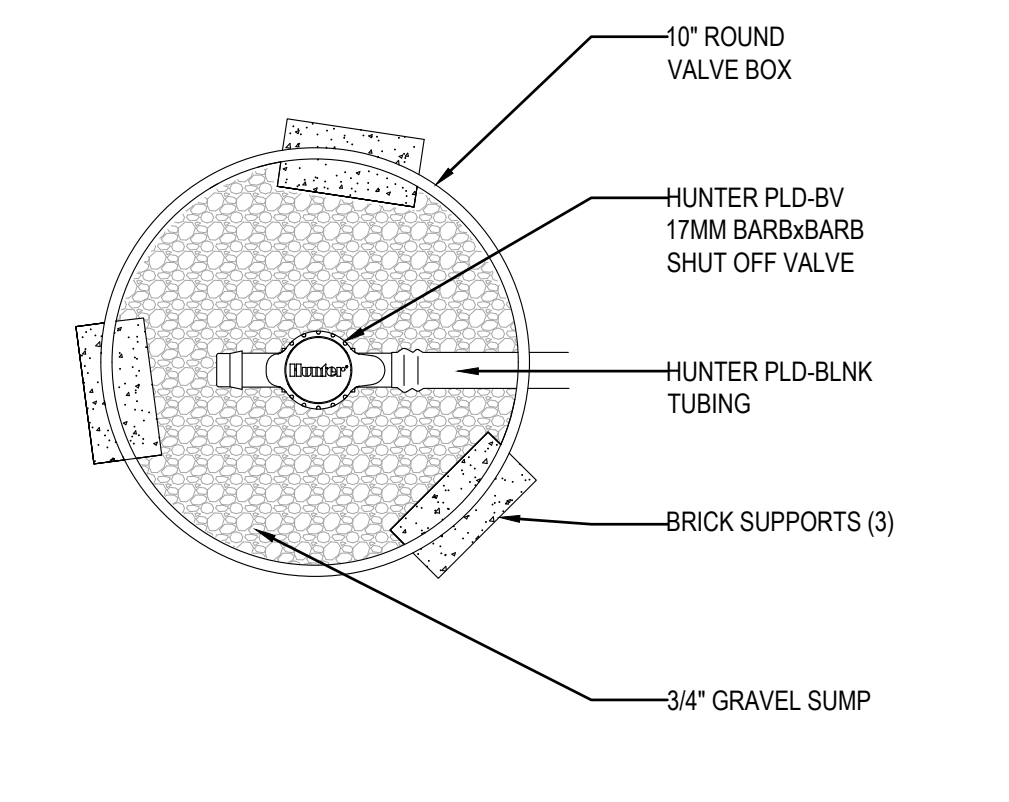
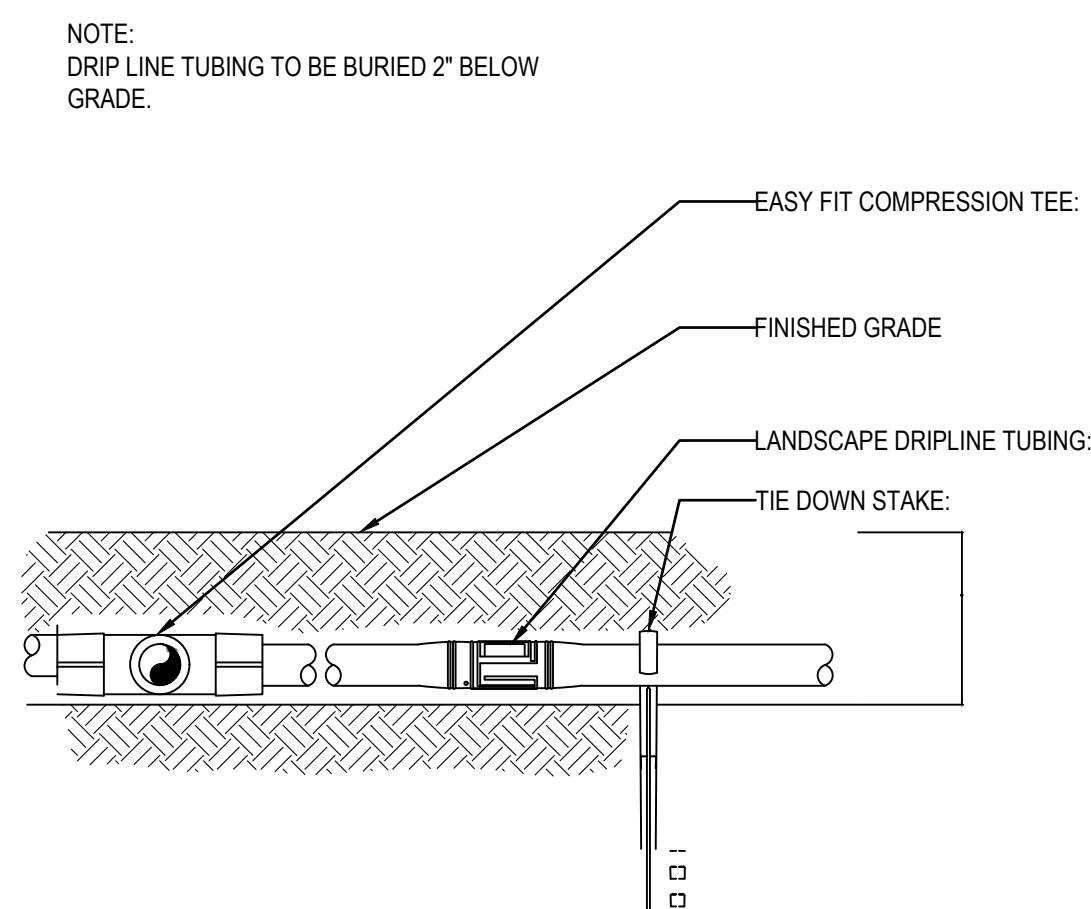
SCALE: NTS

**14 IRREGULAR DRIP LINE LAYOUT**

SCALE: NTS

**15 DRIP LINE LAYOUT**

SCALE: NTS



**16 DRIP LINE TUBING**

SCALE: NTS

**17 MANUAL FLUSH VALVE**

SCALE: NTS

**18 AIR RELIEF VALVE**

SCALE: NTS

**19 MIRE PULL BOX**

SCALE: NTS

**20 AUTOMATIC FLUSH VALVE**

SCALE: NTS



PROJECT NUMBER:

SHEET TITLE:

**IRRIGATION DETAILS**

DRAWN BY:  
DATE CREATED:

SHEET:  
**L2.02**