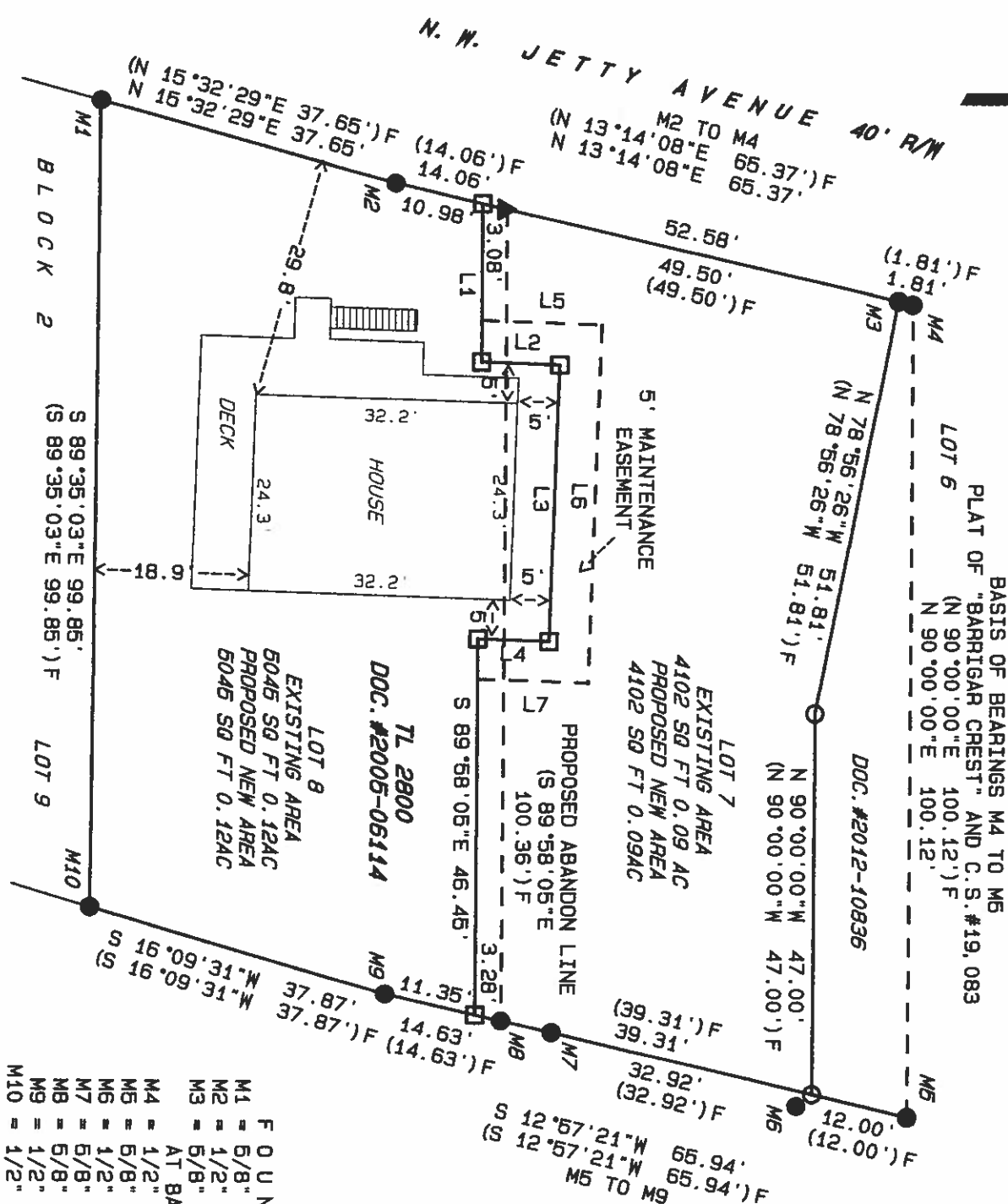


FEBRUARY 1, 2022
SCALE: 1"=20FT

TENTATIVE PLAN FOR A PROPERTY LINE ADJUSTMENT TO TWO TRACTS OF LAND
LOCATED IN BLOCK 2 "BARRIGAR CREST", IN THE SW 1/4 OF THE SW 1/4
OF SECTION 34, T 6 S, R 11 W, W.M., LINCOLN COUNTY, OREGON
FOR: JOHN SHADDEN



FOUND MONUMENT TABLE

M1	= 6/8" I.R. O.P.M.
M2	= 1/2" I.R. C.S. 3219
M3	= 5/8" I.R. BENT, BURIED 0.3', HELD PLUMB
M4	= 1/2" I.R. O.P.M.
M6	= 5/8" I.R. C.S. 2916
M7	= 5/8" I.R. C.S. 2916
M8	= 5/8" I.R. W/1/2" I.P. 0.15' W C.S. 2916
M9	= 1/2" I.R. C.S. 2916
M10	= 1/2" I.R. C.S. 3219

LINE TABLE

L1	= S 89°58'05"E 19.57'
L2	= N 01°51'50"E 9.61'
L3	= S 88°08'10"E 34.30'
L4	= S 01°51'50"W 8.71'
L5	= N 01°51'50"E 14.77'
L6	= S 88°08'10"E 44.29'
L7	= S 01°51'50"W 13.55'

LEGEND

- I.P. = IRON PIPE
- I.R. = IRON ROD
- YPC = YELLOW PLASTIC ID CAP
- O.P.M. = ORIGINAL PLAT MONUMENT
- ▲ = CALCULATED POINT
- = MONUMENTS FOUND AS NOTED IN MONUMENT TABLE
- = MONUMENTS FOUND - 5/8" x 30" I.R. W/YPC MARKED
- = "FERGUSON P.L.S. 2279" C.S.#19,083
- = MONUMENTS TO BE SET - 5/8" x 30" I.R. W/YPC MARKED "FERGUSON P.L.S. 2279"
- C.S. xxx = REFERENCE NUMBER OF RECORD SURVEY
- (xxxx) F = DATA OF RECORD SURVEY BY THIS FIRM C.S.#19,083
- xxxx = DATA OBSERVED BY THIS SURVEY WHERE MEASURED OR CALCULATED DIFFERENT THAN RECORD & NEW DATA

PREPARED BY
DARIUS K. FERGUSON P.L.S.
LAND SURVEYING
6062 S.E. HWY. 101, SUITE B
LINCOLN CITY, OR. 97367
PH: (541) 984-8864
DFERGUSON@SURVEYINGOR.COM

REGISTERED
PROFESSIONAL
LAND SURVEYOR

OREGON
JULY 18, 1987
DARIUS K. FERGUSON
2279

REVENUE 12-31-23