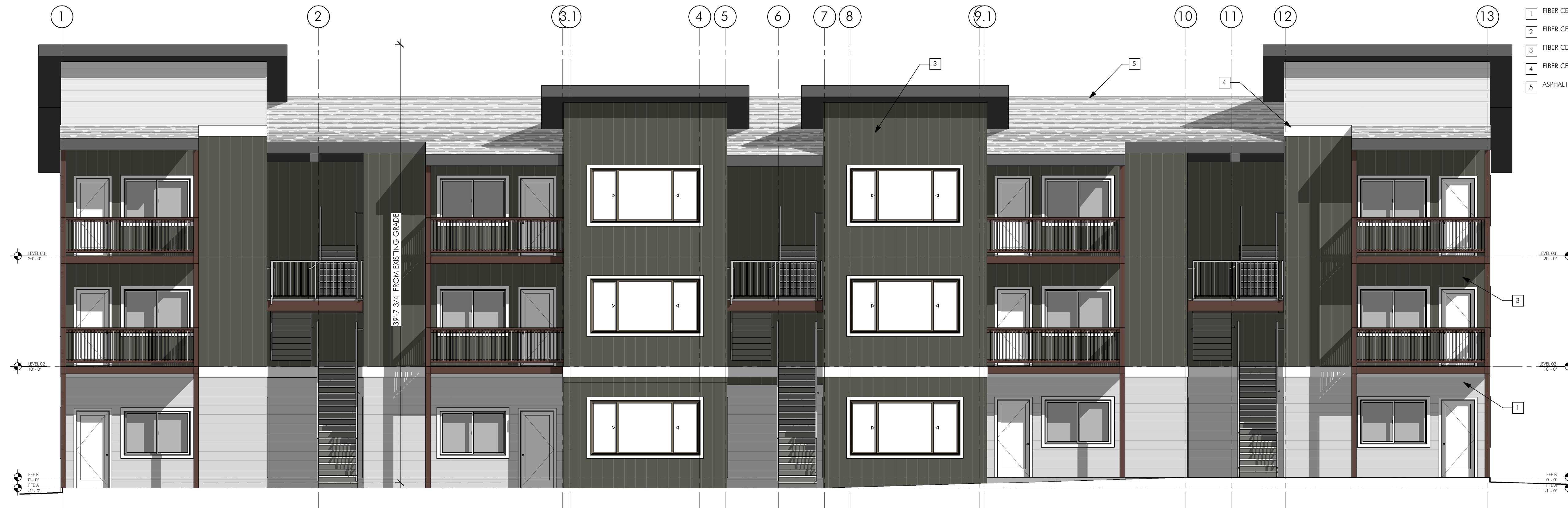


IN THE EVENT CONFLICTS ARE DISCOVERED
BETWEEN THE ORIGINAL SIGNED AND SEALED
DOCUMENTS PREPARED BY THE ARCHITECTS
AND/OR THEIR CONSULTANTS, AND ANY COPY OF
THE DOCUMENTS TRANSMITTED BY MAIL, FAX,
ELECTRONICALLY OR OTHERWISE, THE ORIGINAL
SIGNED AND SEALED DOCUMENTS SHALL GOVERN.

PROJECT # 2022-020
DATE: 2/24/2022
REVISIONS

ELEVATION NOTES:

- 1 FIBER CEMENT LAP SIDING WITH 10" EXPOSURE.
- 2 FIBER CEMENT LAP SIDING WITH 6" EXPOSURE.
- 3 FIBER CEMENT BOARD & BATTEN SIDING @ 12" O.C.
- 4 FIBER CEMENT TRIM, TYP.
- 5 ASPHALT SHINGLE ROOF.



1 SOUTH ELEVATION (FACING PARKING)

0' 2' 4' 6' 8' 10' 16' 3/16" = 1'-0"



2 NORTH ELEVATION

0' 2' 4' 6' 8' 10' 16' 3/16" = 1'-0"

New Multifamily Dev.
Sam Apartments

Lincoln City, OR

SHEET:

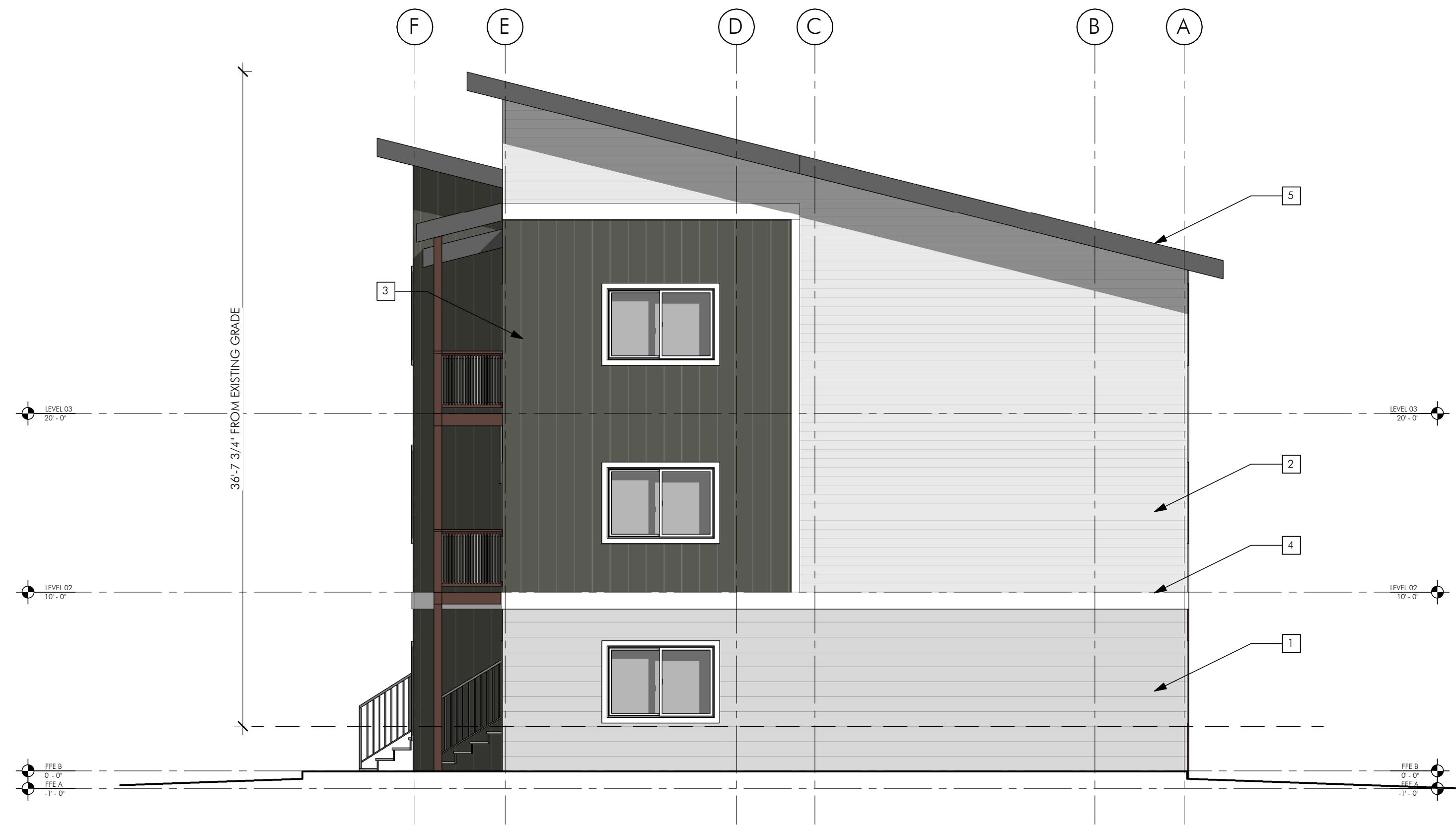
A2.01

IN THE EVENT CONFLICTS ARE DISCOVERED BETWEEN THE ORIGINAL SIGNED AND SEALED DOCUMENTS PREPARED BY THE ARCHITECTS AND/OR THEIR CONSULTANTS, AND ANY COPY OF THE DOCUMENTS TRANSMITTED BY MAIL, FAX, ELECTRONICALLY OR OTHERWISE, THE ORIGINAL SIGNED AND SEALED DOCUMENTS SHALL GOVERN.

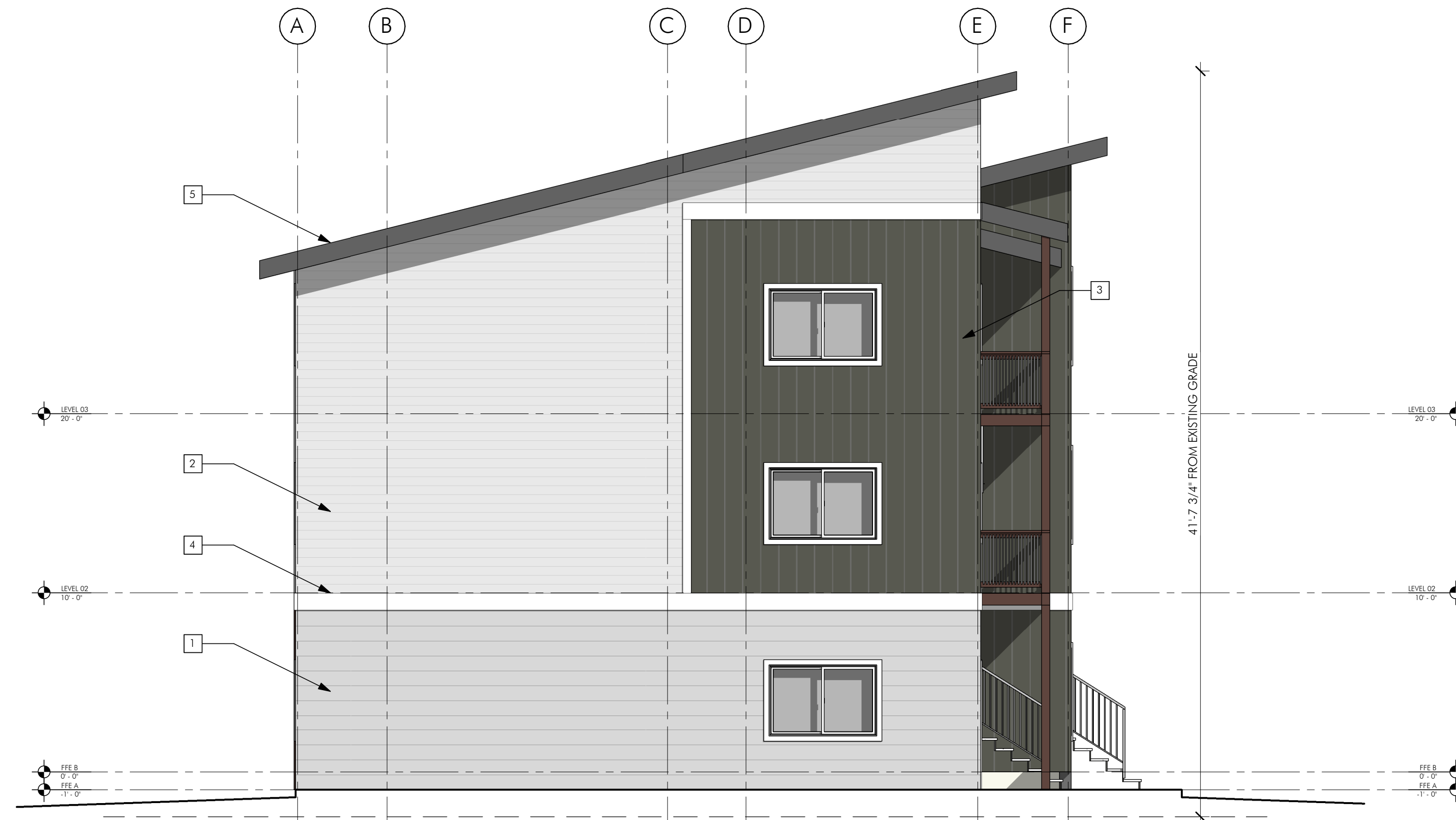
PROJECT # 2022-020
DATE: 2/24/2022
REVISIONS

ELEVATION NOTES:

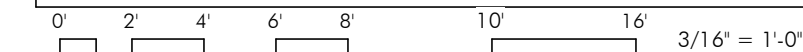
- 1 FIBER CEMENT LAP SIDING WITH 10" EXPOSURE.
- 2 FIBER CEMENT LAP SIDING WITH 6" EXPOSURE.
- 3 FIBER CEMENT BOARD & BATTEN SIDING @ 12" O.C.
- 4 FIBER CEMENT TRIM, TYP.
- 5 ASPHALT SHINGLE ROOF.



1 EAST ELEVATION



2 WEST ELEVATION



New Multifamily Dev.
Sam Apartments
Lincoln City, OR

SHEET:

A2.02