

**EXISTING CONDITIONS
 PLAN**

DESIGNED BY:
 DRAWN BY: ELN
 MANAGED BY:
 CHECKED BY: MTB
 DATE: 08/26/2022
**REGISTERED
 PROFESSIONAL
 LAND SURVEYOR**

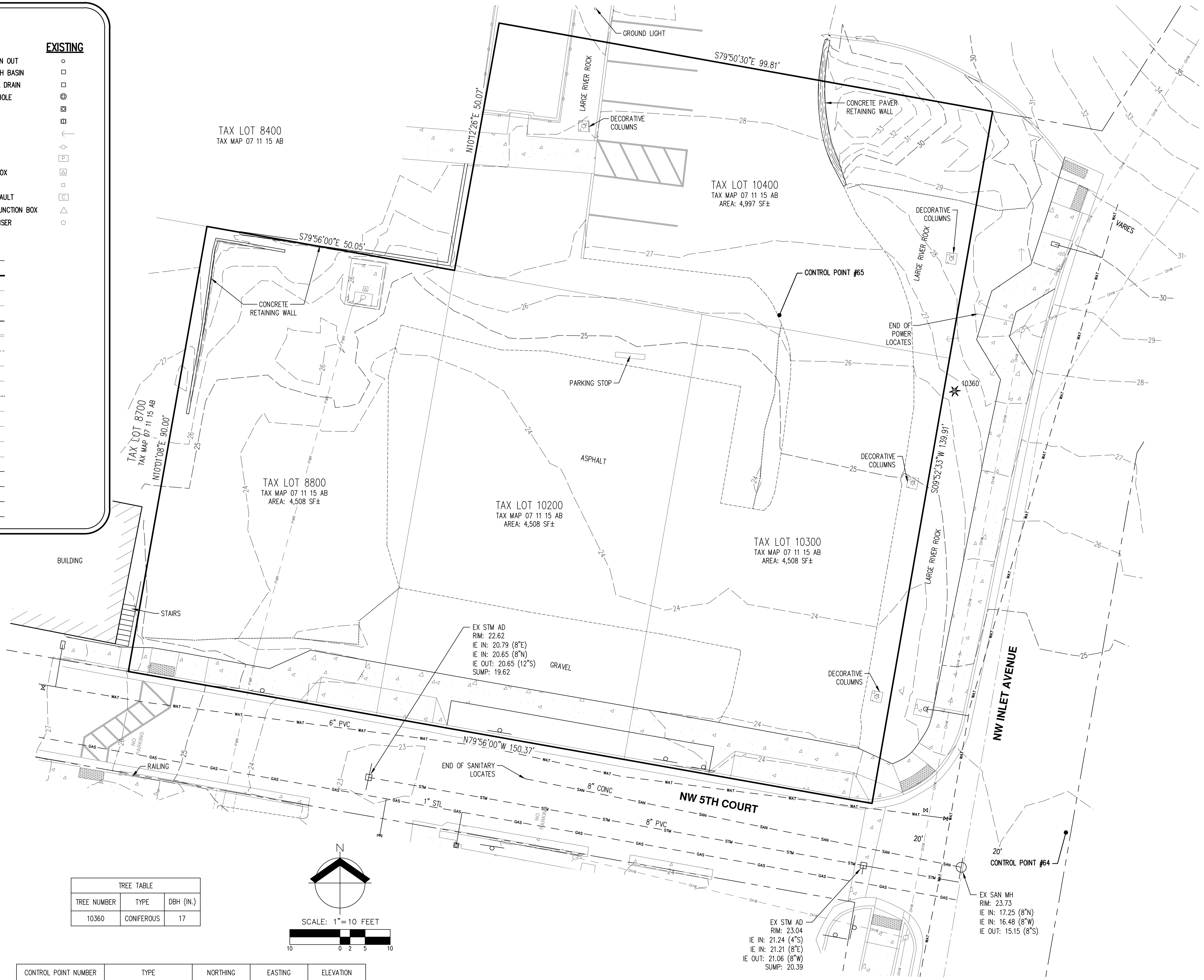
 OREGON
 JANUARY 11, 2005
 ROBERT D. RETTIG
 60124LS
 RENEWS: 12/31/22
 REVISIONS:

LEGEND

EXISTING	EXISTING
DECIDUOUS TREE	STORM DRAIN CLEAN OUT
CONIFEROUS TREE	STORM DRAIN CATCH BASIN
FIRE HYDRANT	STORM DRAIN AREA DRAIN
WATER BLOWOFF	STORM DRAIN MANHOLE
WATER METER	GAS METER
WATER VALVE	GAS VALVE
DOUBLE CHECK VALVE	GUY WIRE ANCHOR
AIR RELEASE VALVE	UTILITY POLE
SANITARY SEWER CLEAN OUT	POWER VAULT
SANITARY SEWER MANHOLE	POWER JUNCTION BOX
SIGN	POWER PEDESTAL
STREET LIGHT	COMMUNICATIONS VAULT
MAILBOX	COMMUNICATIONS JUNCTION BOX
	COMMUNICATIONS RISER

EXISTING

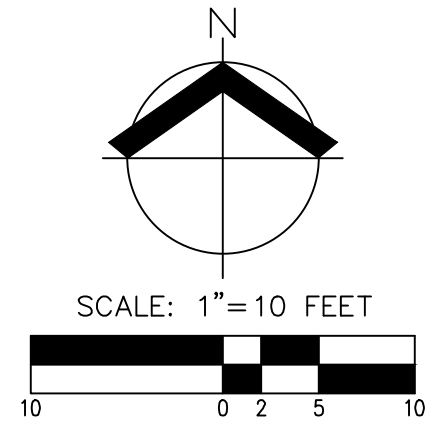
RIGHT-OF-WAY LINE	---
BOUNDARY LINE	---
PROPERTY LINE	---
CENTERLINE	---
DITCH	---
CURB	---
EDGE OF PAVEMENT	---
EASEMENT	---
FENCE LINE	---
GRAVEL EDGE	---
POWER LINE	---
OVERHEAD WIRE	---
COMMUNICATIONS LINE	---
FIBER OPTIC LINE	---
GAS LINE	---
STORM DRAIN LINE	---
SANITARY SEWER LINE	---
WATER LINE	---



- NOTES:**
- UTILITIES SHOWN ARE BASED ON UNDERGROUND UTILITY LOCATE MARKINGS AS PROVIDED BY OTHERS, PROVIDED PER UTILITY LOCATE TICKET NUMBERS 17086894 AND 18247628. THE SURVEYOR MAKES NO GUARANTEE THAT THE UNDERGROUND LOCATES REPRESENT THE ONLY UTILITIES IN THE AREA. CONTRACTORS ARE RESPONSIBLE FOR VERIFYING ALL EXISTING CONDITIONS PRIOR TO BEGINNING CONSTRUCTION.
 - FIELD WORK WAS CONDUCTED AUGUST 10, 2022.
 - VERTICAL DATUM: ELEVATIONS ARE BASED ON NGS BENCHMARK B 52, LOCATED AT THE WEST ENTRANCE TO THE DELAKE SCHOOL. ELEVATION = 35.48 FEET (NAVD 88).
 - BOUNDARY BASED ON SURVEY NUMBER 20666.
 - BUILDING FOOTPRINTS ARE MEASURED TO SIDING UNLESS NOTED OTHERWISE. CONTACT SURVEYOR WITH QUESTIONS REGARDING BUILDING TIES.
 - CONTOUR INTERVAL IS 1 FOOT.
 - TREES WITH DIAMETER OF 6" AND GREATER ARE SHOWN. TREE DIAMETERS WERE MEASURED UTILIZING A DIAMETER TAPE AT BRESTH HEIGHT. TREE INFORMATION IS SUBJECT TO CHANGE UPON ARBORIST INSPECTION.

TREE TABLE

TREE NUMBER	TYPE	DBH (IN.)
10360	CONIFEROUS	17



CONTROL POINT NUMBER	TYPE	NORTHING	EASTING	ELEVATION
64	5/8" IRON ROD WITH RED PLASTIC CAP	10295.10	10101.10	23.57
65	MAG NAIL IN ASPHALT	10398.20	10044.00	26.37