

**TREE INFORMATION** (NUMBERS 601 THROUGH 729 HAVE METAL ID TAGS)

601	SPLIT 7", 11", 13", (2) 14" PINE	649	10" ALDER	697	9" SPRUCE
602	22" SPRUCE	650	14" ALDER	698	16" ALDER DEAD
603	25" SPRUCE	651	11" ALDER	699	6" DECIDUOUS
604	13" PINE	652	17" PINE	700	12" SPRUCE
605	12" ALDER	653	6" HEMLOCK	701	7" HOLLY
606	SPLIT (2) 13" PINE	654	13" PINE	702	10" ALDER DEAD
607	SPLIT (2) 11", (2) 13" PINE	655	14" FIR	703	21" SPRUCE
608	7" PINE	656	13" PINE 657 10" ALDER	704	5" WILLOW
609	13" PINE	657	7" ALDER DEAD	705	10" PINE DEAD
610	14" PINE	658	6" WILLOW	706	26" SPRUCE
611	14" PINE	659	7" WILLOW	707	14" PINE
613	11" PINE	661	10" ALDER	708	16" PINE DEAD
614	10" PINE	662	7" DECIDUOUS	709	19" PINE
615	15" PINE	663	12" ALDER	710	32" SPRUCE
616	SPLIT 11", 13" ALDER	664	11" ALDER DEAD	711	6" WILLOW
617	13" PINE	665	7" ALDER DEAD	712	7" ALDER DEAD
618	30" SPRUCE	666	11" ALDER DEAD	713	30" SPRUCE
619	12" PINE	667	8" ALDER DEAD	714	20" PINE
620	8" PINE	668	6" DECIDUOUS	715	7" WILLOW
621	SPLIT 10", 12", 13", 14" PINE	669	11" PINE	716	13" SPRUCE
622	10" PINE	670	6" DECIDUOUS	717	12" ALDER
623	SPLIT 12", 13" PINE	671	11" PINE	718	SPLIT 6", 8" HOLLY
624	SPLIT 12", 14" ALDER	672	SPLIT 6", 7", ALDER DEAD	719	DECIDUOUS CLUMP
625	19" PINE	673	SPLIT 15", 20" PINE	720	WILLOW CLUMP
626	8" SPRUCE	674	9" PINE	721	13" PINE
627	12" PINE	675	10" ALDER	722	DECIDUOUS CLUMP
628	SPLIT 17", 24" PINE	676	14" ALDER	723	DECIDUOUS CLUMP
629	17" PINE	677	14" ALDER	724	DECIDUOUS CLUMP
630	13" ALDER	678	SPLIT 10", 12" DECIDUOUS BASE	725	SPLIT 10", 12" DECIDUOUS BASE
631	9" SPRUCE	679	SPLIT 6", 8" PINE	726	SPLIT 12", 20" PINE
632	15" ALDER	680	8" ALDER	727	7" ALDER DEAD
633	12" ALDER	681	SPLIT (2) 6" DECIDUOUS	728	6" PINE
634	16" ALDER	682	14" ALDER	729	6" DECIDUOUS DEAD
635	15" PINE	683	SPLIT 6", 9" ALDER	1192	14" DECIDUOUS
636	9" SPRUCE	684	SPLIT 14", 15" PINE	11373	18" DECIDUOUS
637	8" ALDER DEAD	685	13" ALDER	11374	12" DECIDUOUS
638	9" ALDER	686	SPLIT 12", 15" ALDER	11375	10" DECIDUOUS
639	11" ALDER	687	SPLIT 13", 14", 17" ALDER	11376	14" DECIDUOUS
640	12" ALDER	688	SPLIT 8", 7" WILLOW	11377	12" DECIDUOUS
641	6" HEMLOCK	689	SPLIT 6", 10" WILLOW	11469	20" DECIDUOUS
642	7" HEMLOCK	690	SPLIT 6", (3) 9" WILLOW	11470	13" DECIDUOUS
643	12" ALDER	691	13" PINE	11471	16" DECIDUOUS
644	19" PINE	692	14" ALDER DEAD	11472	9" DECIDUOUS
645	15" ALDER	693	10" PINE DEAD	11473	6" HEMLOCK
646	8" ALDER	694	SPLIT (2) 12" PINE	11474	10" DECIDUOUS
647	8" PINE	695	7" HOLLY	11475	17" FIR BROKEN
648	18" ALDER	696	SPLIT 8", 9", 11" WILLOW	11552	DECIDUOUS CLUMP
				11614	SPLIT 8", 9" DECIDUOUS DEAD
				11620	14" DECIDUOUS

**NOTES**

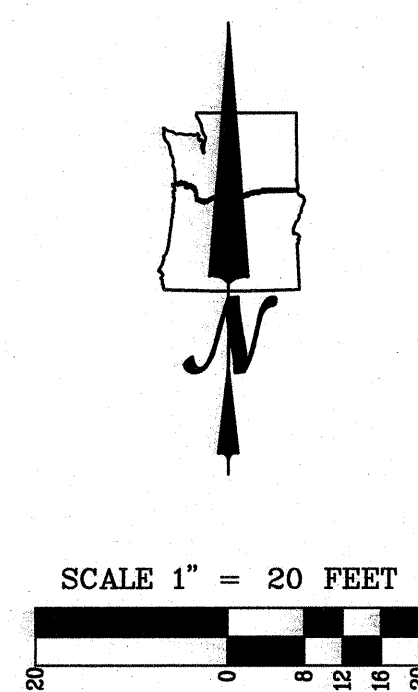
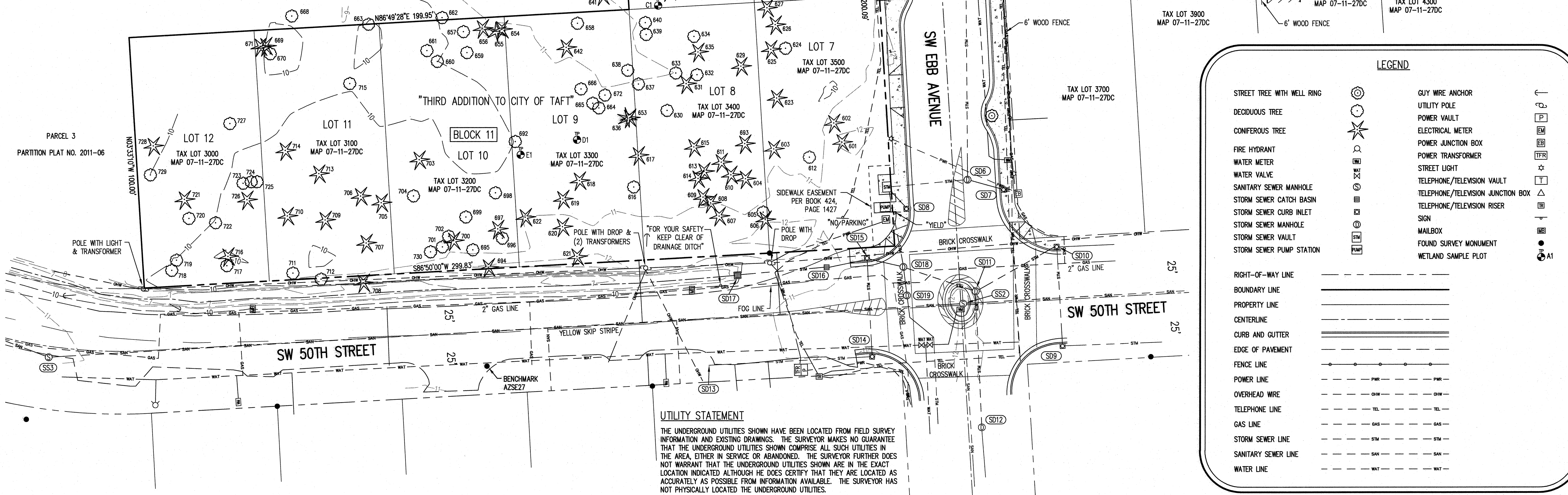
- 1) THE FIELD SURVEY FOR THIS MAP WAS COMPLETED ON APRIL 2, 2021.
- 2) ELEVATIONS AND CONTOURS ARE BASED ON LINCOLN COUNTY BENCHMARK NO. AZSE27. THE BENCHMARK IS AN ALUMINUM DISC APPROXIMATELY 190 FEET WEST OF THE INTERSECTION OF SW 50TH STREET AND SW EBB STREET. IT HAS AN ELEVATION OF 10.29 FEET ON THE NAVD88 DATUM.
- 3) THE BASIS OF BEARINGS FOR THIS SURVEY IS THE PLAT OF THIRD ADDITION TO CITY OF TAFT.
- 4) THE RIGHT-OF-WAY WIDTHS WERE ESTABLISH USING INFORMATION FROM PLATS, RECORD SURVEYS AND THE TAX ASSESSOR'S MAP.
- 5) THE EASEMENTS SHOWN ON THIS MAP ARE BASED ON THE TITLE REPORT, PREPARED BY WESTERN TITLE & ESCROW, WITH ORDER NUMBER W0203050 AND WITH AN EFFECTIVE DATE OF NOVEMBER 4, 2020 AT 5:00 PM.
- 6) THE UNDERGROUND UTILITIES ARE BASED ON THE MARKINGS PER LOCATE TICKET NUMBERS 21065452 AND 21065459.

**STORM SEWER INFORMATION**

(SD1)	CURB INLET RIM = 13.01' GUTTER INLET = 12.31' 12" I.E. IN (NE) = 10.3' 12" I.E. OUT (SW) = 10.7'
(SD2)	CURB INLET RIM = 12.87' GUTTER INLET = 12.32' 12" I.E. OUT (NW) = 10.5'
(SD3)	MANHOLE RIM = 12.73' 12" I.E. IN (SE) = 9.3' 12" I.E. IN (NE) = 9.3' 12" I.E. OUT (W) NOT VISIBLE
(SD4)	MANHOLE RIM = 12.24' 12" I.E. IN (N) = 7.7' 12" I.E. IN (E) = 7.6' 15" I.E. OUT (S) = 7.5'
(SD5)	CURB INLET RIM = 12.31' GUTTER INLET = 11.69' 8" I.E. IN (N) = 10.3' 12" I.E. OUT (S) = 10.1'
(SD6)	MANHOLE RIM = 11.58' 12" I.E. IN (SE) = 8.6' 15" I.E. IN (N) = 6.0' 18" I.E. OUT (W) = 5.7'
(SD7)	CURB INLET RIM = 11.65' GUTTER INLET = 11.00' 12" I.E. OUT (NW) = 8.6' SUMP = 7.4'
(SD8)	CURB INLET RIM = 11.63' GUTTER INLET = 10.93' 12" I.E. OUT (NW) = 7.8' SUMP = 7.1'
(SD9)	CURB INLET RIM = 13.01' GUTTER INLET = 10.99' 8" I.E. IN (E) = 8.4' 12" I.E. OUT (N) = 6.5' SUMP = 6.3'
(SD10)	CURB INLET RIM = 11.82' GUTTER INLET = 11.21' 12" I.E. IN (E) = 7.0' 12" I.E. IN (S) = 5.9' 12" I.E. OUT (SW) = 5.8' SUMP = 5.3'
(SD11)	MANHOLE RIM = 11.88' 12" I.E. IN (NE) = 5.6' 12" I.E. IN (S) = 8.0' 12" I.E. IN (W) = 7.3' 18" I.E. OUT (NW) = 2.8' FLOWLINE = 2.8'
(SD12)	MANHOLE RIM = 12.13' 12" I.E. IN (S) = 4.2' 12" I.E. OUT (N) = 4.2'
(SD13)	CONCRETE INLET RIM = 11.02' 12" I.E. OUT (E) = 8.9'
(SD14)	CURB INLET RIM = 11.54' GUTTER INLET = 10.83' 12" I.E. IN (W) = 8.1' 12" I.E. OUT (N) = 8.1' SUMP = 7.6'
(SD15)	CURB INLET RIM = 11.51' GUTTER INLET = 10.80' 12" I.E. IN (S) = 8.0' 12" I.E. IN (W) = 7.3' 12" I.E. OUT (SE) = 7.1' SUMP = 6.7'

**SANITARY SEWER INFORMATION**

(SS1)	MANHOLE RIM = 12.33' 6" I.E. IN (W) = 9.5' 8" I.E. OUT (E) = 9.4'
(SS2)	MANHOLE RIM = 12.37' 8" I.E. IN (S) = 4.7' 10" I.E. IN (N) = 4.6' 8" I.E. IN (W) = 4.6' 10" I.E. OUT (E) = 4.6'
(SS3)	MANHOLE RIM = 11.26' 8" I.E. IN (NW) = 5.9' 8" I.E. OUT (E) = 5.8'
(SD16)	CATCH BASIN RIM = 11.68' 18" I.E. IN (W) = 7.9' 12" I.E. OUT (E) = 7.9'
(SD17)	DITCH INLET RIM TOP = 10.51' RIM BOTTOM = 9.03' 12" I.E. OUT (E) = 8.2'
(SD18)	VAULT RIM = 11.42' PIPES NOT MEASURABLE
(SD19)	VAULT RIM = 11.63' PIPES NOT MEASURABLE



**LEGEND**

STREET TREE WITH WELL RING	(Symbol)	GUY WIRE ANCHOR	(Symbol)
DECIDUOUS TREE	(Symbol)	UTILITY POLE	(Symbol)
CONIFEROUS TREE	(Symbol)	POWER VAULT	(Symbol)
FIRE HYDRANT	(Symbol)	ELECTRICAL METER	(Symbol)
WATER METER	(Symbol)	POWER JUNCTION BOX	(Symbol)
WATER VALVE	(Symbol)	POWER TRANSFORMER	(Symbol)
SANITARY SEWER MANHOLE	(Symbol)	STREET LIGHT	(Symbol)
STORM SEWER CATCH BASIN	(Symbol)	TELEPHONE/TELEVISION VAULT	(Symbol)
STORM SEWER CURB INLET	(Symbol)	TELEPHONE/TELEVISION JUNCTION BOX	(Symbol)
STORM SEWER MANHOLE	(Symbol)	TELEPHONE/TELEVISION RISER	(Symbol)
STORM SEWER VAULT	(Symbol)	MAILBOX	(Symbol)
STORM SEWER PUMP STATION	(Symbol)	FOUND SURVEY MONUMENT	(Symbol)
WETLAND SAMPLE PLOT	(Symbol)		
RIGHT-OF-WAY LINE	(Symbol)		
BOUNDARY LINE	(Symbol)		
PROPERTY LINE	(Symbol)		
CENTERLINE	(Symbol)		
CURB AND GUTTER	(Symbol)		
EDGE OF PAVEMENT	(Symbol)		
FENCE LINE	(Symbol)		
POWER LINE	(Symbol)		
OVERHEAD WIRE	(Symbol)		
TELEPHONE LINE	(Symbol)		
GAS LINE	(Symbol)		
STORM SEWER LINE	(Symbol)		
SANITARY SEWER LINE	(Symbol)		
WATER LINE	(Symbol)		

**UTILITY STATEMENT**  
THE UNDERGROUND UTILITIES SHOWN HAVE BEEN LOCATED FROM FIELD SURVEY INFORMATION AND EXISTING DRAWINGS. THE SURVEYOR MAKES NO GUARANTEE THAT THE UNDERGROUND UTILITIES SHOWN COMPRISE ALL SUCH UTILITIES IN THE AREA, EITHER IN SERVICE OR ABANDONED. THE SURVEYOR FURTHER DOES NOT WARRANT THAT THE UNDERGROUND UTILITIES SHOWN ARE IN THE EXACT LOCATION INDICATED ALTHOUGH HE DOES CERTIFY THAT THEY ARE LOCATED AS ACCURATELY AS POSSIBLE FROM INFORMATION AVAILABLE. THE SURVEYOR HAS NOT PHYSICALLY LOCATED THE UNDERGROUND UTILITIES.

**ORTHWEST SURVEYING, INC.**  
1815 NW 169th PLACE, SUITE 2090  
BEAVERTON, OR 97006  
PH: (503) 848-2127 FAX: (503) 848-2179  
EMAIL: nwsurveying@nwswi.com

BEING LOTS 1-2, BLOCK 10 AND LOTS 9-12, BLOCK 11, 3RD ADDITION TO TAFT LOCATED IN THE SE 1/4 OF SECTION 27, TOWNSHIP 7 SOUTH, RANGE 11 WEST, W.M., CITY OF LINCOLN CITY, LINCOLN COUNTY, OREGON

**TOPOGRAPHIC SURVEY**  
**OREGON**  
**LINCOLN CITY**

DRAWING NO.: 2261 TOPO  
SCALE: AS NOTED  
DRAWING GENERATED BY: LD2004  
DRAWN BY: BJA  
CHECKED BY: CHS  
**PREPARED FOR:**  
TAFT DEVELOPMENT, LLC  
6740 SW RALEIGHWOOD LANE  
PORTLAND, OR 97225

REVISIONS:  
INITIAL RELEASE: APR. 29, 2021

REGISTERED PROFESSIONAL LAND SURVEYOR  
CLINTON H. STUBBS JR.  
55489LS  
RENEWS: 06/30/22

JOB NUMBER  
**2261**

SHEET  
**1 OF 1**