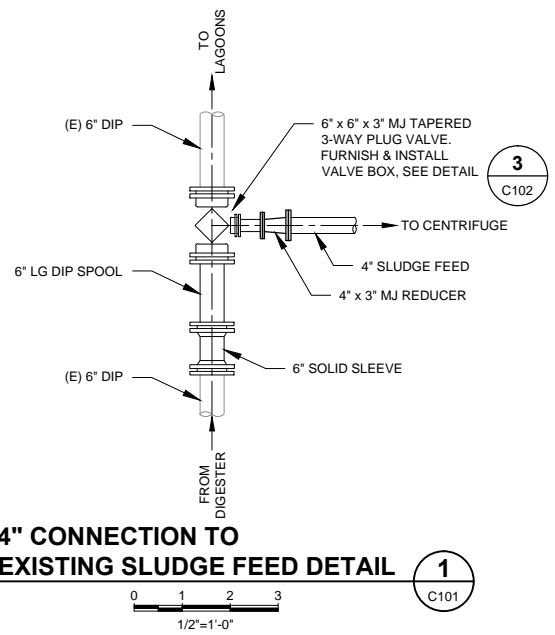
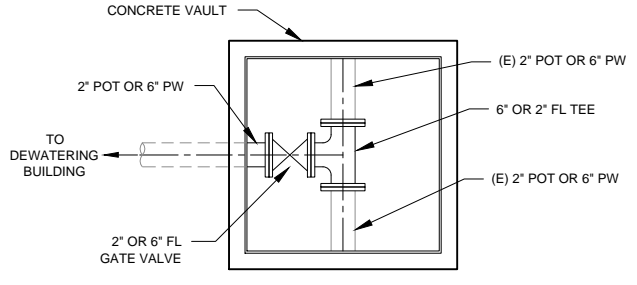


- KEY NOTES:**
- 1 DEWATERED SLUDGE DUMPSTER
 - 2 CENTRIFUGE
 - 3 4" SLUDGE FEED CONNECTION
 - 4 2" POT
 - 5 6" PW
 - 6 6" PROCESS DRAIN LINE
 - 7 ELECTRICAL POWER AND FIBER OPTIC CABLE, SEE ELECTRICAL SHEETS.
 - 8 BUILDING CORNER, SEE SHEET C100.

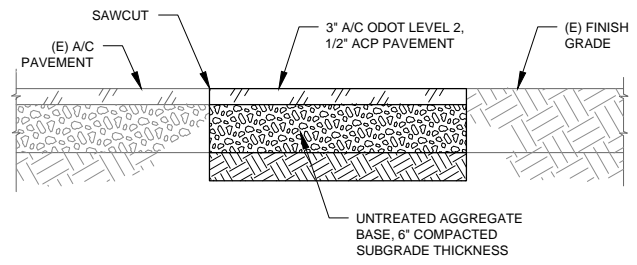
- GENERAL YARD PIPING NOTES:**
1. THE PIPING SYSTEMS SHOWN ON THE DRAWINGS ARE, IN PART, DIAGRAMMATIC AND DO NOT SHOW EVERY JOINT, OFFSET, FITTING, COUPLING OR OTHER APPURTENANCE THAT MAY BE REQUIRED TO INSTALL THE WORK. THE CONTRACTOR SHALL PROVIDE ALL COMPONENTS REQUIRED TO INSTALL COMPLETE, FUNCTIONAL AND SUCCESSFULLY-TESTED PIPING SYSTEMS, WHETHER OR NOT SHOWN ON THE PLANS, PROVIDE FITTINGS FOR CHANGES IN VERTICAL AND HORIZONTAL PIPE ALIGNMENTS THAT CANNOT BE ACCOMPLISHED BY JOINT DEFLECTIONS IN CONFORMANCE WITH THE REQUIREMENTS OF THE PLANS AND SPECIFICATIONS.
 2. COMPLY WITH ALL PROVISIONS OF ORS 757.541 TO 757.571. NOTIFY ALL OWNERS OF UNDERGROUND FACILITIES AT LEAST 48 BUSINESS-DAY HOURS, BUT NOT MORE THAN 10 BUSINESS DAYS, BEFORE COMMENCING EXCAVATION.
 3. THE CONTRACTOR SHALL POTHOLE ALL POINTS OF CONNECTION TO EXISTING BURIED PIPING AND ALL POTENTIALLY-CONFLICTING EXISTING UTILITIES PRIOR TO CONSTRUCTION TO ALLOW ANY ADJUSTMENTS IN PIPE GRADE AND ALIGNMENT THAT ARE NECESSARY TO PROVIDE PROPER SLOPES AND AVOID CONFLICTS.
 4. RESTRAIN ALL JOINTS IN PIPING SYSTEMS THAT SHALL BE PRESSURE TESTED AS REQUIRED IN THE PIPE SCHEDULE.
 5. COMPACT BEDDING AND BACKFILL IN ACCORDANCE WITH THE SPECIFICATIONS.
 6. PROVIDE FINISHED GRADE OR SURFACES IN ACCORDANCE WITH THE PLANS.
 7. ALL BURIED PIPE SHALL HAVE A MINIMUM OF 3-FOOT OF COVER FROM TOP OF PIPE TO FINISH GRADE, UNLESS OTHERWISE NOTED OR ACCEPTED IN ADVANCE BY ENGINEER.
 8. DEFLECT JOINTS TO MEET REQUIRED VERTICAL AND HORIZONTAL ALIGNMENTS. DO NOT EXCEED 80% OF MAXIMUM JOINT DEFLECTION RECOMMENDED BY PIPE MANUFACTURER.
 9. DIP SECTIONS SHALL NOT EXCEED 18-FOOT IN LENGTH.
 10. SHUTDOWNS OF EXISTING PIPES AND OTHER FACILITIES SHALL CONFORM TO THE SCHEDULING, NOTIFICATION, DURATION AND SEQUENCING REQUIREMENTS SET FORTH IN THE CONTRACT DOCUMENTS. ALL SHUTDOWNS SHALL BE TEMPORARY, UNLESS OTHERWISE NOTED.
 11. CONTRACTOR SHALL PLUG OR CAP EXISTING BURIED PIPE THAT IS ABANDONED IN PLACE. REMOVE ABANDONED PIPING TO A MINIMUM 24-INCHES BELOW FINISHED SURFACE OR GRADE, UNLESS OTHERWISE NOTED.
 12. CONTRACTOR TO FIELD VERIFY EXISTING ELECTRICAL UTILITIES PRIOR TO CONSTRUCTION.
 13. 3-WAY PLUG VALVE SHALL BE DEZURIK OR APPROVED EQUAL WITH 2-INCH NUT OPERATION.
 14. GATE VALVES SHALL BE AMERICAN RESILIENT WEDGE OR APPROVED EQUAL. FURNISH 2-INCH AND HANDWHEEL IF IN VAULT OR **GATE VALES**



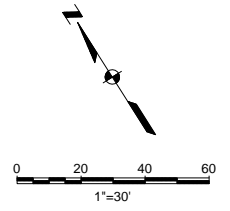
4" CONNECTION TO EXISTING SLUDGE FEED DETAIL 1
C101



WATER LINE CONNECTION DETAIL 2
C101



ASPHALT CONCRETE PAVING DETAIL 3
C101
NOT TO SCALE



CHAD CADIENTE 2/22/2017 12:48 PM P:\cad\1511576028_10_City of Lincoln City-WWTP Biosolids\157602810c101.dwg

USE OF DOCUMENTS

THIS DOCUMENT, INCLUDING THE INCORPORATED DESIGNS, IS AN INSTRUMENT OF SERVICE FOR THIS PROJECT AND SHALL NOT BE USED FOR ANY OTHER PROJECT WITHOUT THE WRITTEN AUTHORIZATION OF KENNEDY/JENKS CONSULTANTS.

NO.	REVISION	DATE	BY

SCALES

0 1" = 25mm

IF THIS BAR IS NOT DIMENSION SHOWN, ADJUST SCALES ACCORDINGLY.

DESIGNED	NVP
DRAWN	CEC
CHECKED	RSP

CITY OF LINCOLN CITY
LINCOLN CITY, OREGON

DEWATERING FACILITY

Kennedy/Jenks Consultants
421 SW 6TH AVENUE, SUITE 1000 PORTLAND, OREGON 97204

CIVIL AND ELECTRICAL YARD PIPING PLAN

FILE NAME: 157602810c101.dwg
JOB NO.: 1576028.10
DATE: FEBRUARY 2017
SHEET OF: **C101** OF 20

100% BID SET