

TENTATIVE PLAN FOR A LOT LINE ADJUSTMENT BETWEEN TWO TRACTS OF
 LAND LOCATED IN THE NW 1/4 OF THE NW 1/4 OF SECTION 11,
 T 7 S, R 11 W, W.M.,
 LINCOLN COUNTY, OREGON
 7-11-11BB TL2700 & TL2701
 FOR
 DAN THOMAS

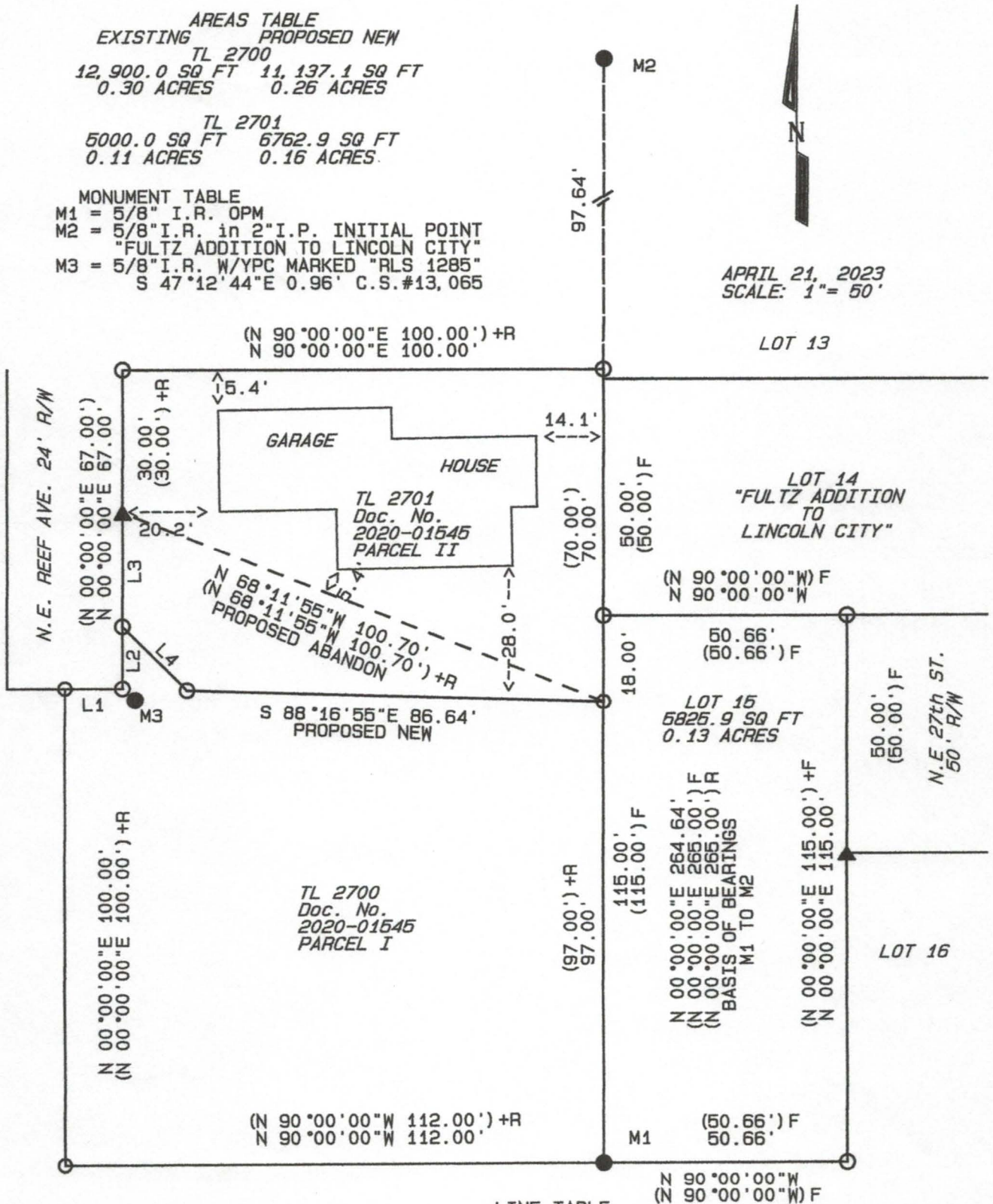
AREAS TABLE

EXISTING	PROPOSED NEW
TL 2700	
12,900.0 SQ FT 0.30 ACRES	11,137.1 SQ FT 0.26 ACRES
TL 2701	
5000.0 SQ FT 0.11 ACRES	6762.9 SQ FT 0.16 ACRES

MONUMENT TABLE

M1 = 5/8" I.R. OPM
M2 = 5/8" I.R. in 2" I.P. INITIAL POINT "FULTZ ADDITION TO LINCOLN CITY"
M3 = 5/8" I.R. W/YPC MARKED "RLS 1285" S 47°12'44"E 0.96' C.S.#13,065

APRIL 21, 2023
 SCALE: 1" = 50'



LINE TABLE

L1 =	N 90°00'00"E	12.00'
	(N 90°00'00"E)	(12.00') +R
L2 =	N 00°00'00"E	13.00'
L3 =	N 00°00'00"E	24.00'
L2+L3 =	N 00°00'00"E	37.00'
	(N 00°00'00"E)	(37.00') +R
L4 =	N 00°00'00"E	25.00'

PREPARED BY
 DARIUS K. FERGUSON P.L.S.
 LAND SURVEYING
 6062 S.E. HWY 104 SUITE B