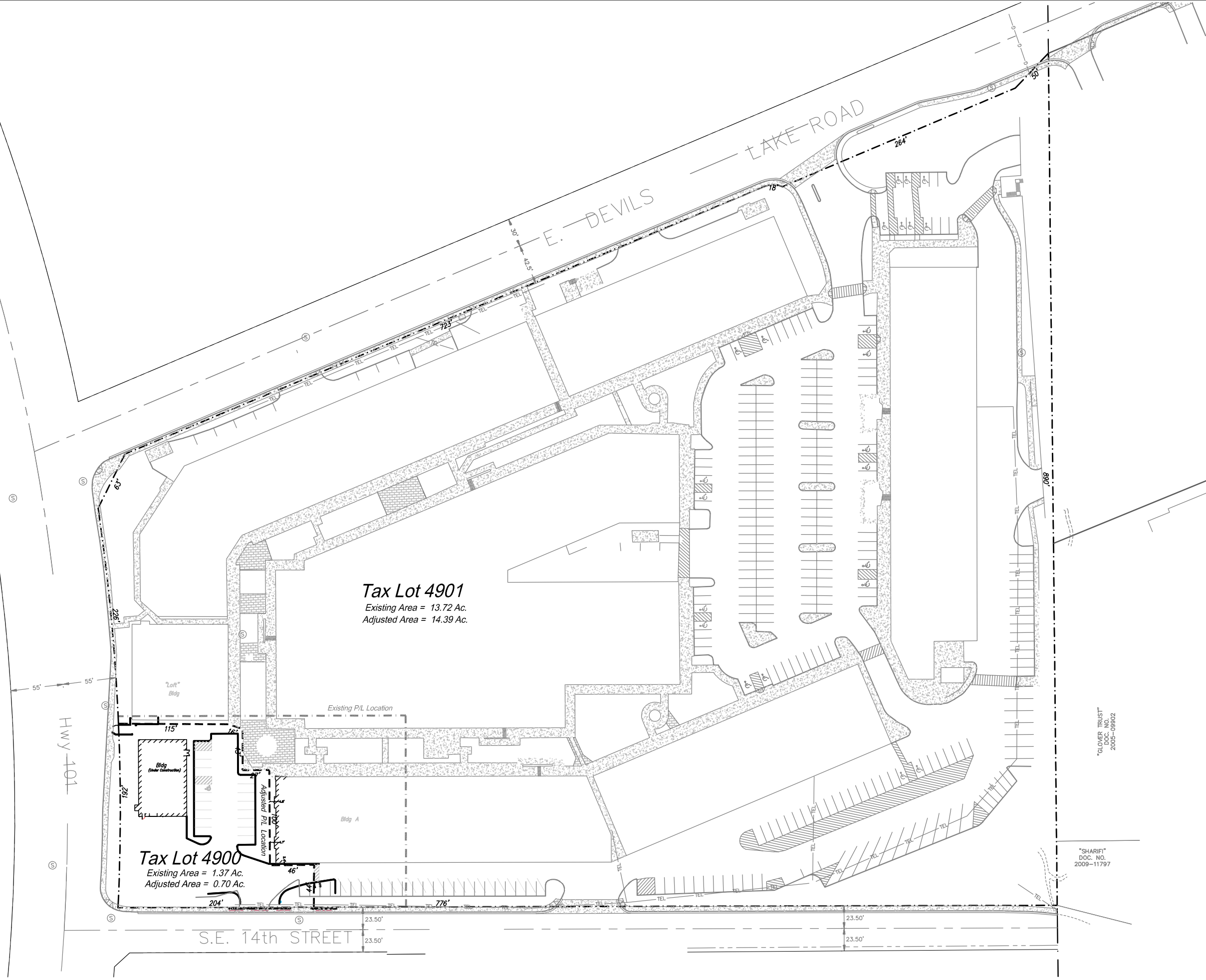




Scale 1"=100'



Tax Lot 4901
Existing Area = 13.72 Ac.
Adjusted Area = 14.39 Ac.

Tax Lot 4900
Existing Area = 1.37 Ac.
Adjusted Area = 0.70 Ac.

DATE	May 2023
DRAWN BY	KS
CHECKED BY	
REVISION	0
JOB NO.	

WESTLAKE
CONSULTANTS INC.

ENGINEERING ♦ SURVEYING ♦ PLANNING
PACIFIC CORPORATE CENTER
15115 S.W. SEQUOIA PARKWAY, SUITE 150
TIGARD, OREGON 97224
(503) 684-0652
FAX (503) 624-0157

PLA Survey Exhibit
7-11-15DD TL 4900 & 4901
City of Lincoln City, OR
Singerman Real Estate

GLOVER TRUST
DOC. NO.
2005-09802

SHARIF
DOC. NO.
2009-11797