

Lincoln City Drinking Water Protection Plan

Draft Plan Public Meeting
February 15, 2024



Housekeeping

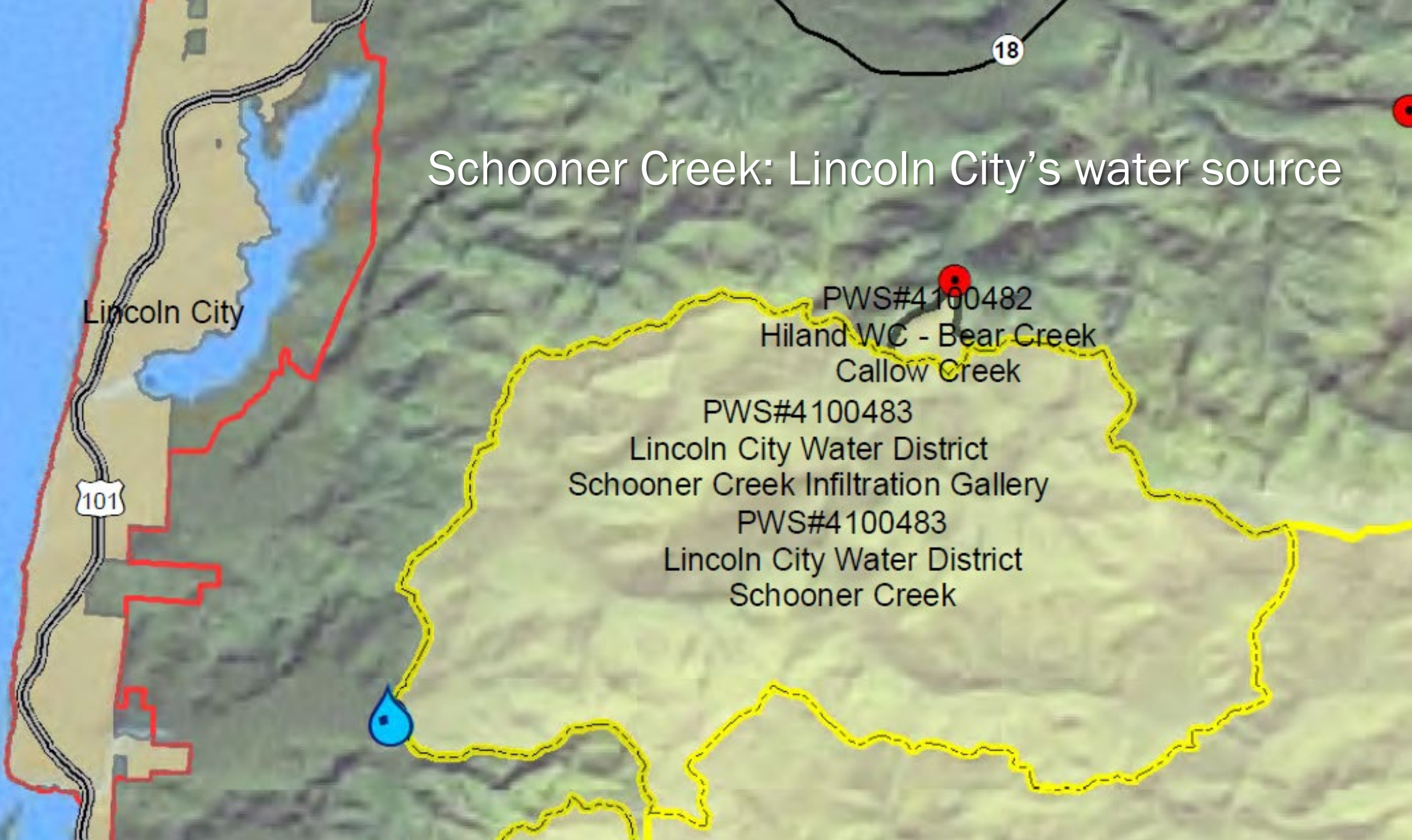
- Facilitators: Suzanne de Szoeke, Leah Cogan
 - GSI Water Solutions, Inc.
- In-person attendees: please silence cell phones
- Online attendees: please keep your microphone and video off during the presentation
- Comments and questions at the end
 - Raise hand
 - Use chat in Zoom
- The meeting will be recorded
- Send follow-up questions and comments to Suzanne de Szoeke
 - sdeszoeke@gsiws.com
 - (541) 257-9006

Meeting Objectives

- Describe the Draft Drinking Water Protection Plan (DWPP)
 - Risk assessment
 - Strategies to address risks
 - Implementation plan for strategies
 - Contingency plan
- Gather public input on the Draft DWPP

**Goal: Protect Lincoln City's
drinking water source**

Schooner Creek: Lincoln City's water source



Lincoln City

101

18

PWS#4100482

Hiland WC - Bear Creek
Callow Creek

PWS#4100483

Lincoln City Water District
Schooner Creek Infiltration Gallery

PWS#4100483

Lincoln City Water District
Schooner Creek



Drinking Water Protection Plan

- DEQ Source Water Assessment (2002 and updated in 2016)
- OHA grant: Drinking Water Source Protection Fund (2022)
- Develop DWPP with Team and public input (2023-2024)



DWPP Team

- Diverse stakeholder interests and technical expertise
 - Local government
 - State and federal agencies
 - Forestry land managers
 - Conservation groups



DWPP Components

Risks

- Identify and prioritize potential sources of contamination risks to drinking water sources

Strategies

- Plan for reducing, eliminating, or mitigating risks

Implementation

- Identify activities needed to implement strategies

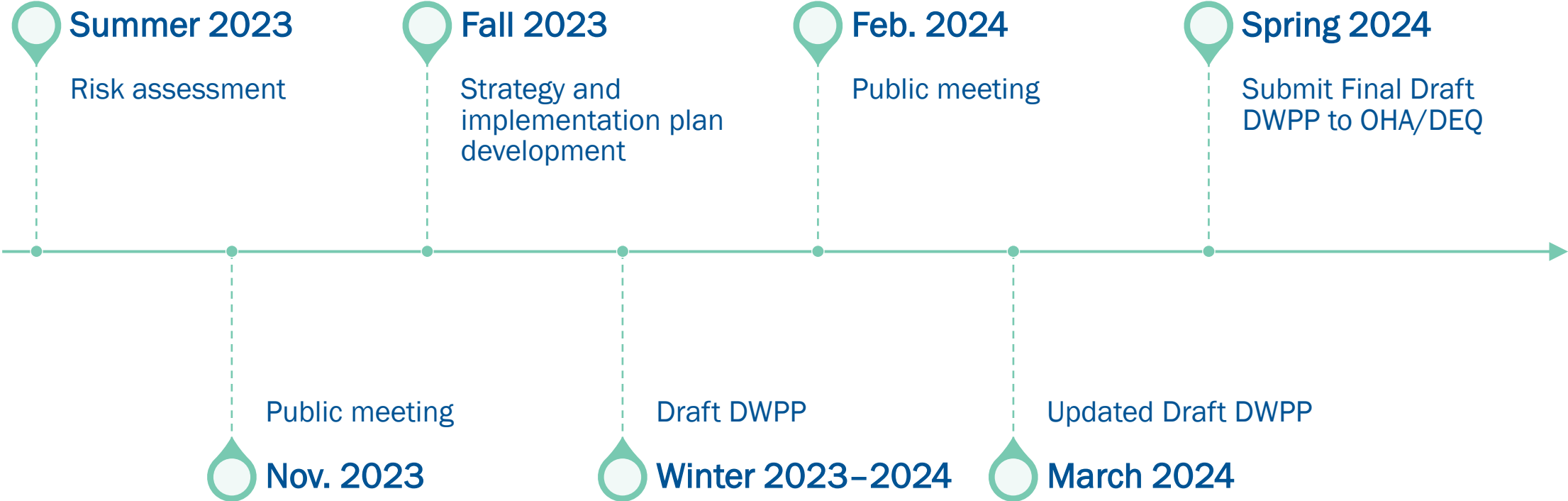
Contingency Plan

- Describe plans for responding to the loss or substantial reduction of water available

Future Sources

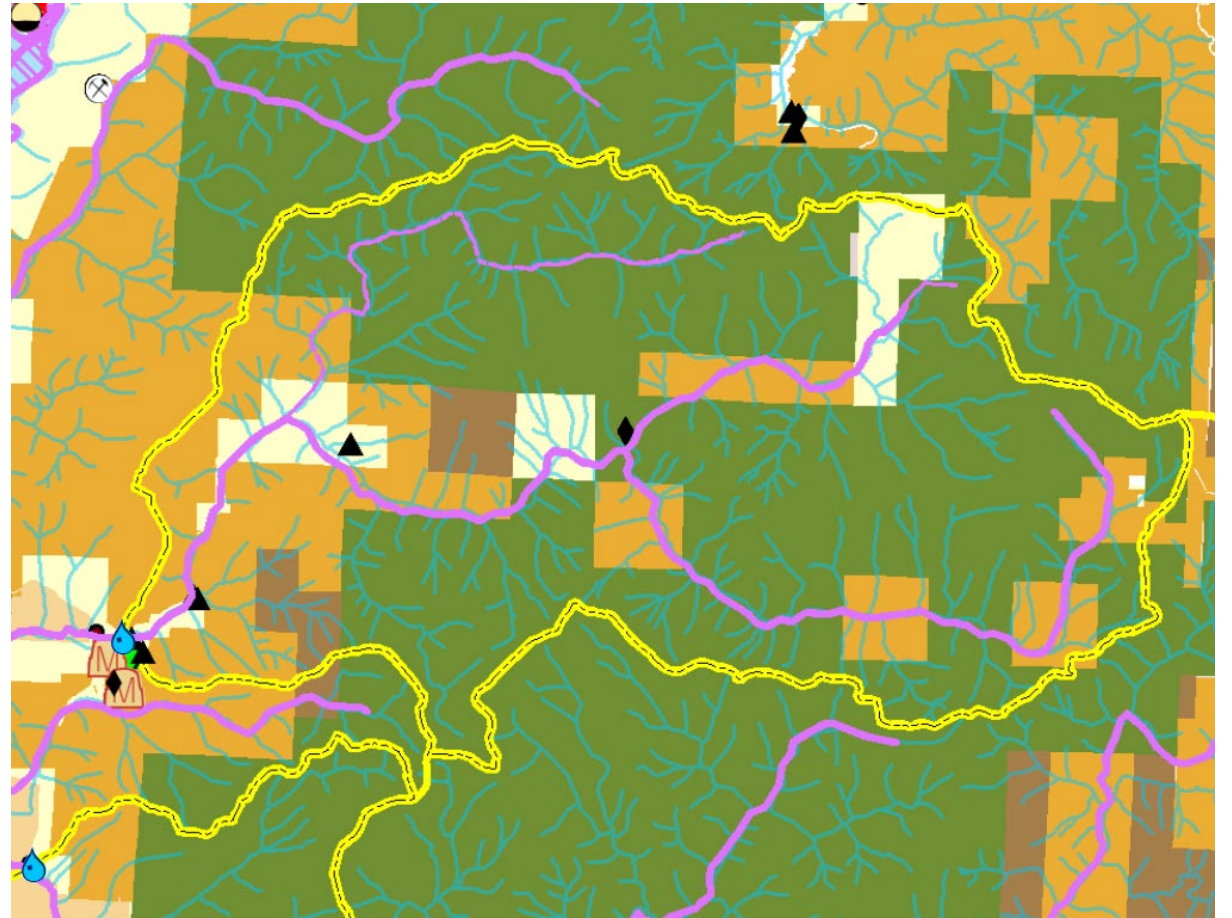
- Consideration of future sources if needed in the next 20 years

Timeline



Risk Assessment Process

- Source Water Assessment
- DWPP Team knowledge
- Categorized by land use/activity

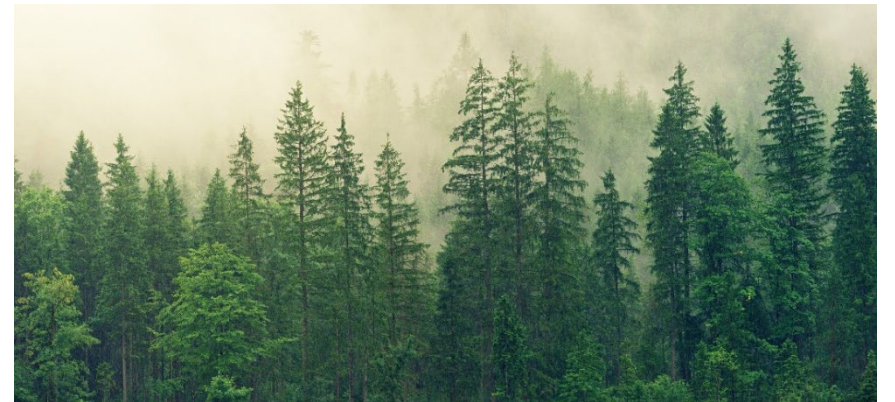


Risk Prioritization

- Scale 1 (low) to high (5): likelihood and consequence
- Select strategies to address highest risks to drinking water first

Likelihood	Consequence				
	Insignificant (1)	Minor (2)	Moderate (3)	Major (4)	Severe (5)
Almost certain (5)	Medium	Medium	High	High	High
Likely (4)	Low	Medium	Medium	High	High
Possible (3)	Low	Medium	Medium	Medium	High
Unlikely (2)	Low	Low	Medium	Medium	Medium
Rare (1)	Low	Low	Low	Low	Medium

Potential Risks



Risks and Rankings

Natural Processes

- Drought and low flows (5,5)
- Earthquake (3,5)
- Tsunami (3,2)
- Wildfire (4,3)
- Severe storms (4,3)
- Highly erodible soils (5,4)
- Insects and fungal infections (1,2)

Forestry

- Clearcut harvest (5,3)
- Non-clearcut harvest (3,3)
- Access roads (5,3)
- Chemical applications (5,2)
- Riparian impacts (5,4)

Municipal

- Aging infrastructure (5,3)
- Vandalism (2,4)
- Encampments and dumpsites (3,3)

Likelihood and consequence (1=low, 5=high)

Risks and Rankings

Transportation

- Roads and stream crossings (4,3)

Rural Residential

- Rural homes (5,5)
- Septic systems (5,3)
- Domestic wells (4,2)
- Grazing animals (4,3)

Likelihood and consequence (1=low, 5=high)

Strategies to Address Risks



Sediment and erosion control



Pollution prevention programs



Critical area protection



Water conservation



Emergency planning and agency coordination



Monitoring programs

Sediment and Erosion Control

- Working with landowners
- Road and culvert maintenance
- Ecosystem restoration
- Riparian plantings



Pollution Prevention Programs

- FERNS spraying notifications
- Roadside vegetation management
- Technical assistance
 - Septic systems
 - Household and garden chemicals
 - Grazing animals
- Hazardous waste collection events
- Dumpsite cleanups



Critical Area Protection



- Land acquisition and/or conservation easements
- Restrict soil-disturbing activities (e.g., timber harvest, rural development, etc.)
- Manage for watershed health

Water Conservation



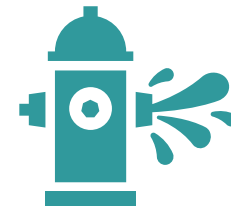
Conservation outreach

Mid-Coast Water
Hospitality industry
Free conservation items



Ordinances

Plumbing fixture standards
Low water use landscaping



Infrastructure

Leak detection and repairs
Maintenance and upgrades
City parks and facilities

Emergency Planning and Agency Coordination



- Source water protection in emergency plans
- Hazardous spill response
- Fire danger signage
- Security and cybersecurity
- Disaster preparedness

Monitoring Programs

- Water quantity
- Water quality
 - Turbidity
 - Chemical applications
- Invasive species



Implementation Plan

- Specific activities to implement strategies
- Three phases
 1. Data collection, establishing partnerships, high-priority risks
 2. Strengthening partnerships and securing funding
 3. Substantial planning or funding needed, low-priority risks



Phase 1

- Sediment and erosion control
 - Identify high-priority areas
 - Technical assistance
 - Communicate with landowners
- Pollution prevention programs
 - FERNS notifications
 - Landowner resource guide
 - Promote hazardous waste events
 - Monitor and clean up dumpsites

Dust Abatement Road Surface Treatment



Phase 1

- Critical area protection
 - Identify critical areas
 - Communicate with willing landowners
 - Communicate with public landowners
- Emergency planning and agency coordination
 - Existing emergency plans
 - Assess security needs



Phase 1

Water Conservation

Outreach

- Customer outreach
- Conservation items
- Hospitality outreach
- Fixture rebates

Infrastructure

- Leak detection
- Meter upgrades

Phase 1



- Monitoring programs
 - Streamflow trends
 - Turbidity testing
 - Plan for chemical application sampling
 - Communicate about invasive species concerns

Phase 2

- Sediment and erosion control
 - Support technical assistance
 - Sediment reduction on private forestlands
 - Public land road inventory
 - High-priority erosion control and ecosystem restoration projects



Phase 2

- Pollution prevention programs
 - Continue technical assistance and communication
 - Potential business hazardous waste events
 - Continue to monitor and clean up dumpsites and encampments
- Critical area protection
 - Planning for acquisitions
 - Seek funding
 - MOU with public landowners



Phase 2

Water Conservation



Phase 2

- Emergency planning and agency coordination
 - Fire risk signage
 - Disaster preparedness projects
 - Security systems and training
- Monitoring programs
 - Continue streamflow and turbidity monitoring
 - Chemical sampling
 - Monitor for invasive species as needed



Phase 3: Long-term Implementation



EXPAND ON PREVIOUS
EFFORTS



SEEK FUNDING



STRENGTHEN
PARTNERSHIPS

Contingency Plan

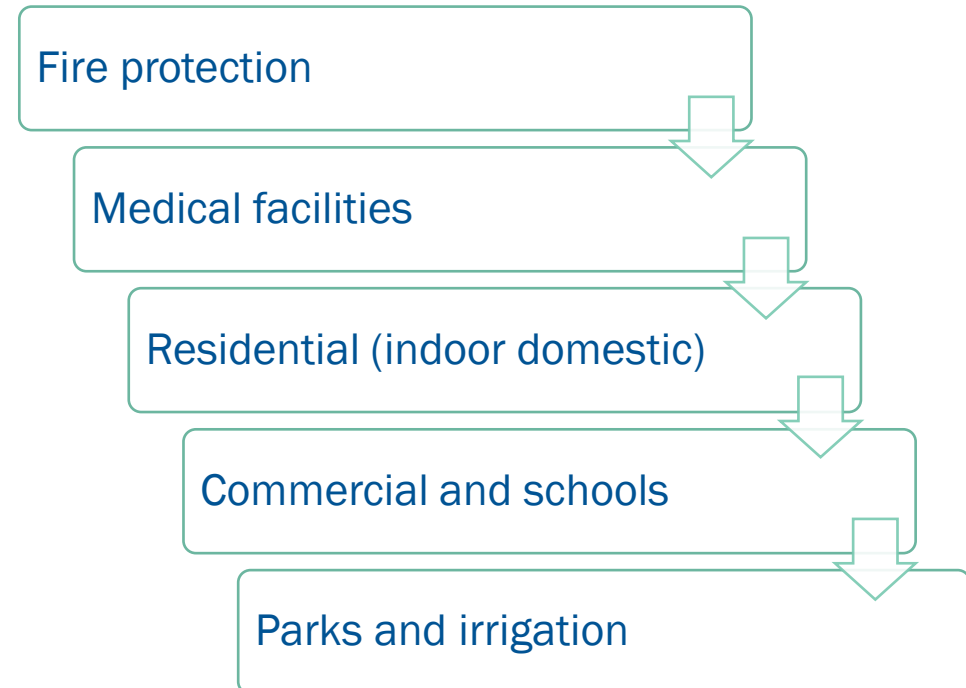


- Required for State approval of DWPP
- Coordinated with other plans
 - City's Emergency Operations Plan (EOP)
 - City's Water Management and Conservation Plan (WMCP)
 - Lincoln County Multi-Jurisdictional Hazard Mitigation Plan

Contingency Plan Elements

- Threats to water supply
 - Risks identified in DWPP
 - Natural disasters and human-related events

- Prioritization of water usage



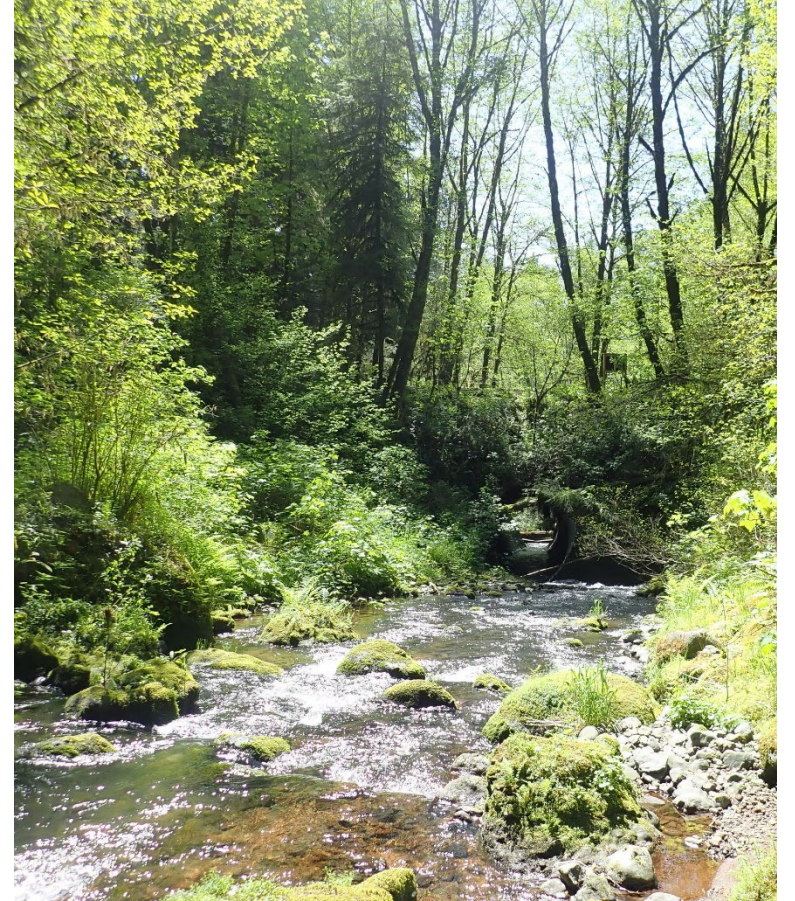
Contingency Plan Elements

- Response to potential incidents
 - Action checklist in EOP
- Key personnel
 - EOP roles and responsibilities



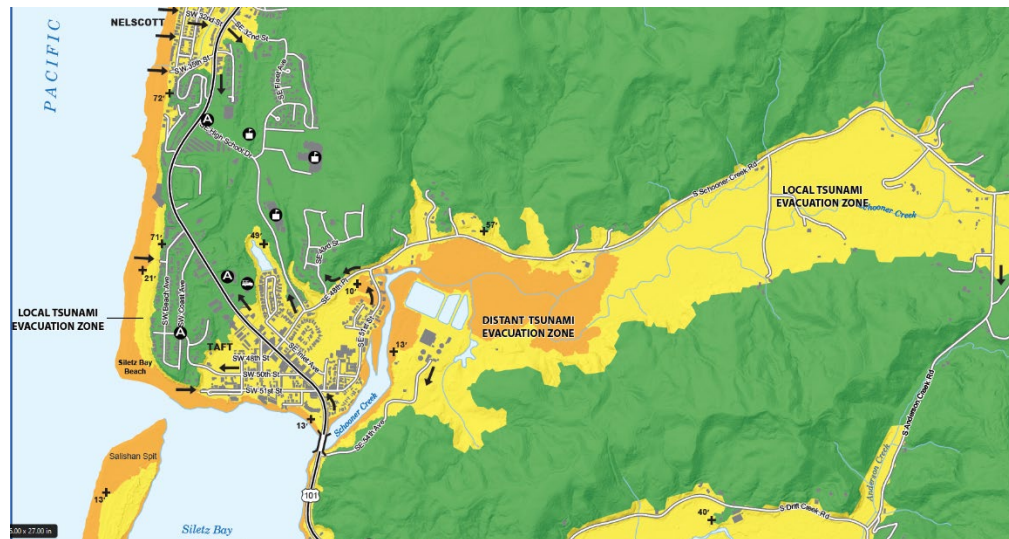
Contingency Plan Elements

- Replacement of potable water supply
 - Short-term: WMCP Curtailment Plan
 - Loss of supply: switch sources (Drift Creek), use stored water in reservoirs
 - Long-term: continue replacement options
- Conservation measures
 - Based on WMCP Curtailment Plan
 - 5 levels of curtailment



Contingency Plan Elements

- Plan testing, review, and update
 - At least every 5 years
- Personnel training
 - EOP emergency exercises/training
- Public education
 - Emergency preparedness: City website
 - Billing messages and outreach
- Logistical and financial resources



Future Water Sources

- Sufficient water rights for Schooner Creek
- Water rights held in reserve
- No current plans for additional sources during planning period, pending Water Master Plan update
- Water conservation remains essential





Questions or comments about the DWPP?

- Raise your hand or use Zoom chat

Meeting recording will be available on City website

Send follow-up questions/comments to:

Suzanne de Szoeki

sdeszoeki@gsiws.com

(541) 257-9006

We want your input!

Next Steps

- Integrate public input into the DWPP
- City Council approval
- Final Draft DWPP to Oregon Health Authority and Oregon Department of Environmental Quality



Thanks to the Oregon Health Authority, Oregon Department of Environmental Quality, and the Lincoln City Drinking Water Protection Plan Team Members!

Questions?

Suzanne de Szoeki
sdeszoeki@gsiws.com
(541) 257-9006